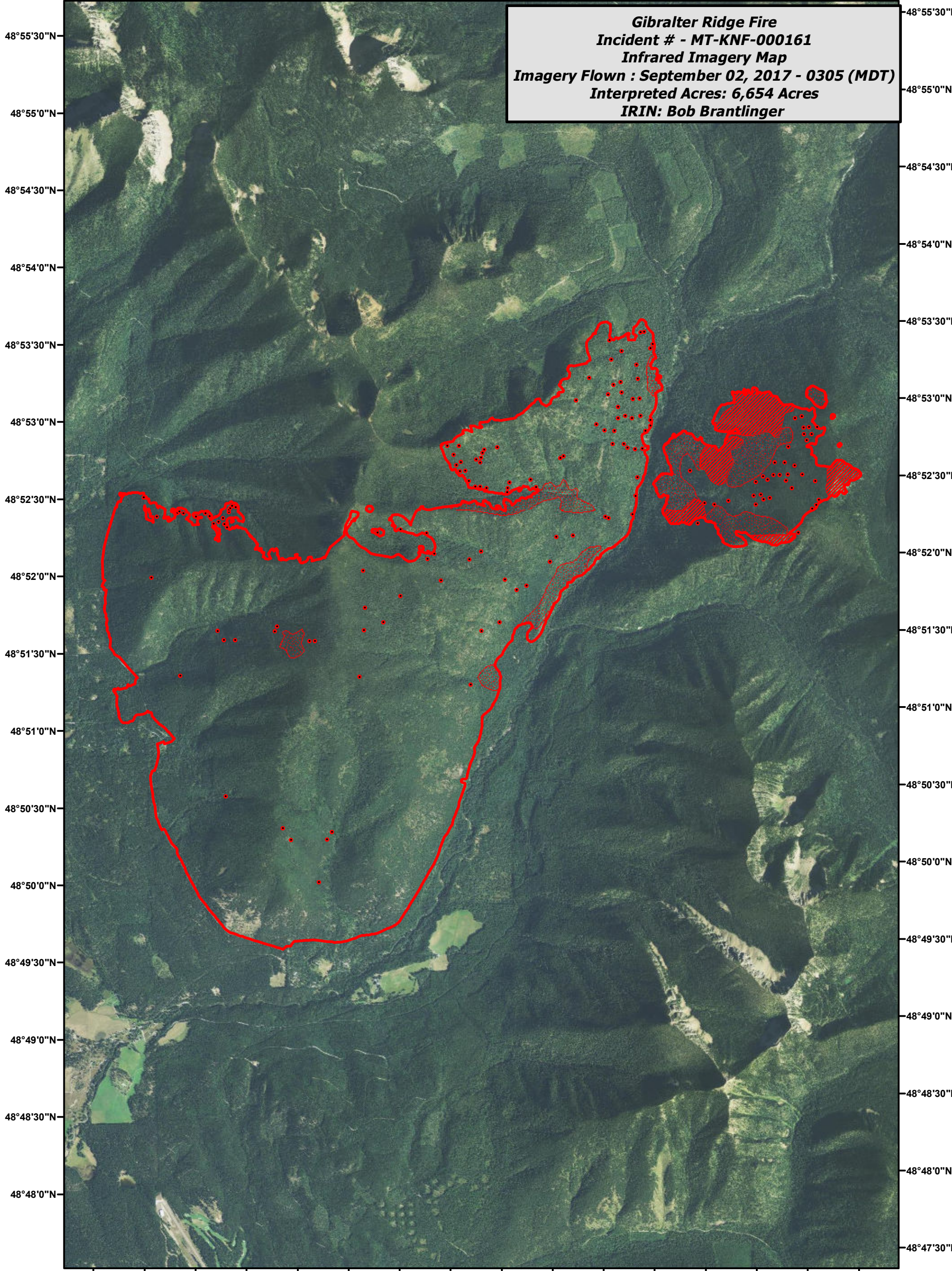


114°53'0"W 114°52'0"W 114°51'0"W 114°50'0"W 114°49'0"W 114°48'0"W 114°47'0"W 114°46'0"W

**Gibraltar Ridge Fire**  
**Incident # - MT-KNF-000161**  
**Infrared Imagery Map**  
**Imagery Flown : September 02, 2017 - 0305 (MDT)**  
**Interpreted Acres: 6,654 Acres**  
**IRIN: Bob Brantlinger**



**Legend**

- Heat Perimeter
- Scattered Heat Source
- Intense Heat
- Isolated Heat Source

