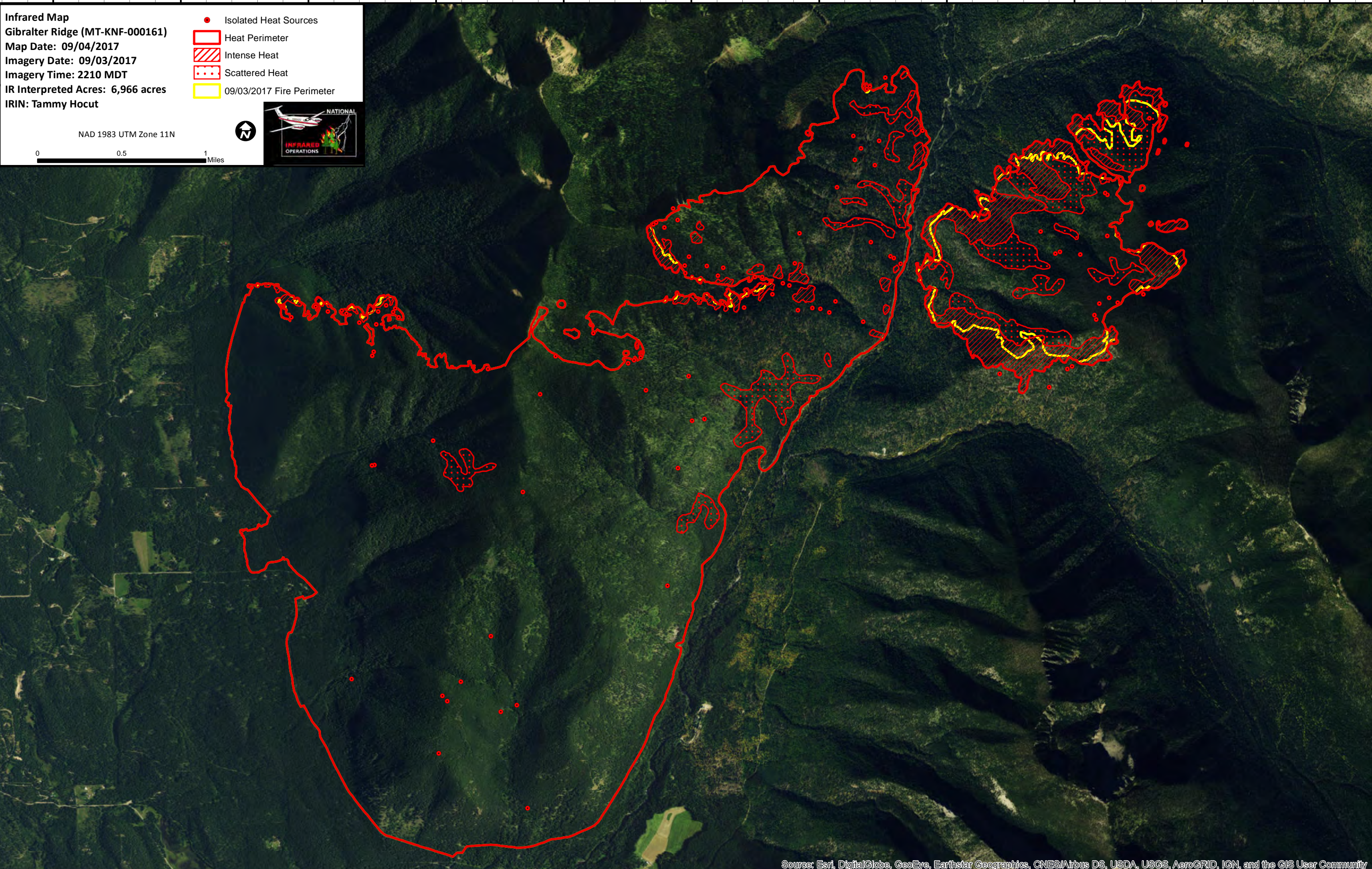
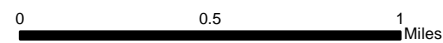


114°55'W 114°54'W 114°53'W 114°52'W 114°51'W 114°50'W 114°49'W 114°48'W 114°47'W 114°46'W 114°45'W

Infrared Map
Gibraltar Ridge (MT-KNF-000161)
Map Date: 09/04/2017
Imagery Date: 09/03/2017
Imagery Time: 2210 MDT
IR Interpreted Acres: 6,966 acres
IRIN: Tammy Hocut

- Isolated Heat Sources
- Heat Perimeter
- Intense Heat
- Scattered Heat
- 09/03/2017 Fire Perimeter

NAD 1983 UTM Zone 11N



48°53'N

48°52'N

48°51'N

48°50'N

48°53'N

48°52'N

48°51'N

48°50'N

114°55'W 114°54'W 114°53'W 114°52'W 114°51'W 114°50'W 114°49'W 114°48'W 114°47'W 114°46'W 114°45'W