


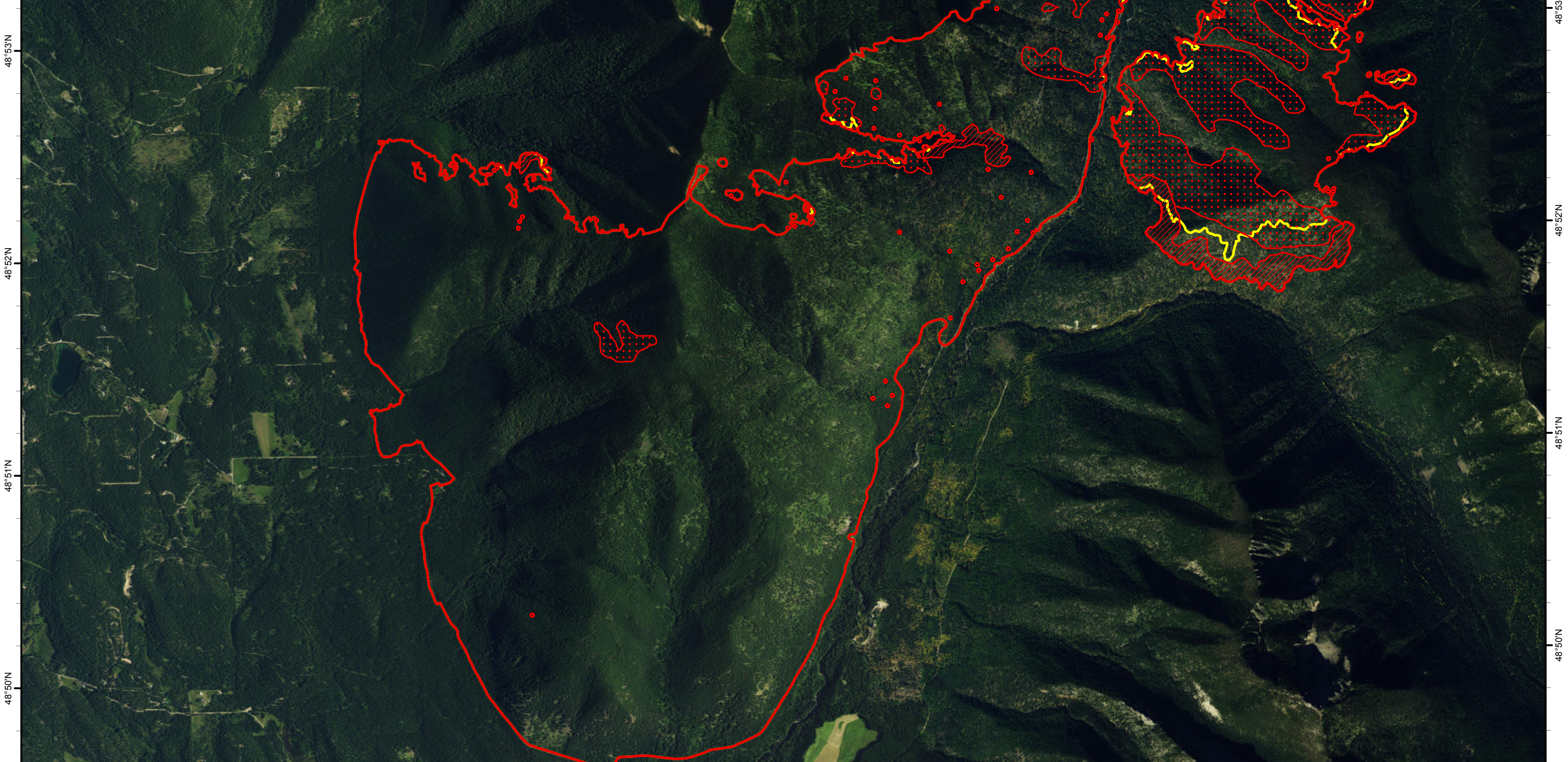
114°56'W 114°55'W 114°54'W 114°53'W 114°52'W 114°51'W 114°50'W 114°49'W 114°48'W 114°47'W 114°46'W

Infrared Map
Gibraltar Ridge (MT-KNF-000161)
 Map Date: 09/05/2017
 Imagery Date: 09/05/2017
 Imagery Time: 0250 MDT
 IR Interpreted Acres: 7,192 acres
 IRIN: Tammy Hocut

- Isolated Heat Sources
- Heat Perimeter
- Intense Heat
- Scattered Heat
- 09/04/2017 Fire Perimeter

NAD 1983 UTM Zone 11N

0 0.5 1 Miles

114°56'W 114°55'W 114°54'W 114°53'W 114°52'W 114°51'W 114°50'W 114°49'W 114°48'W 114°47'W 114°46'W