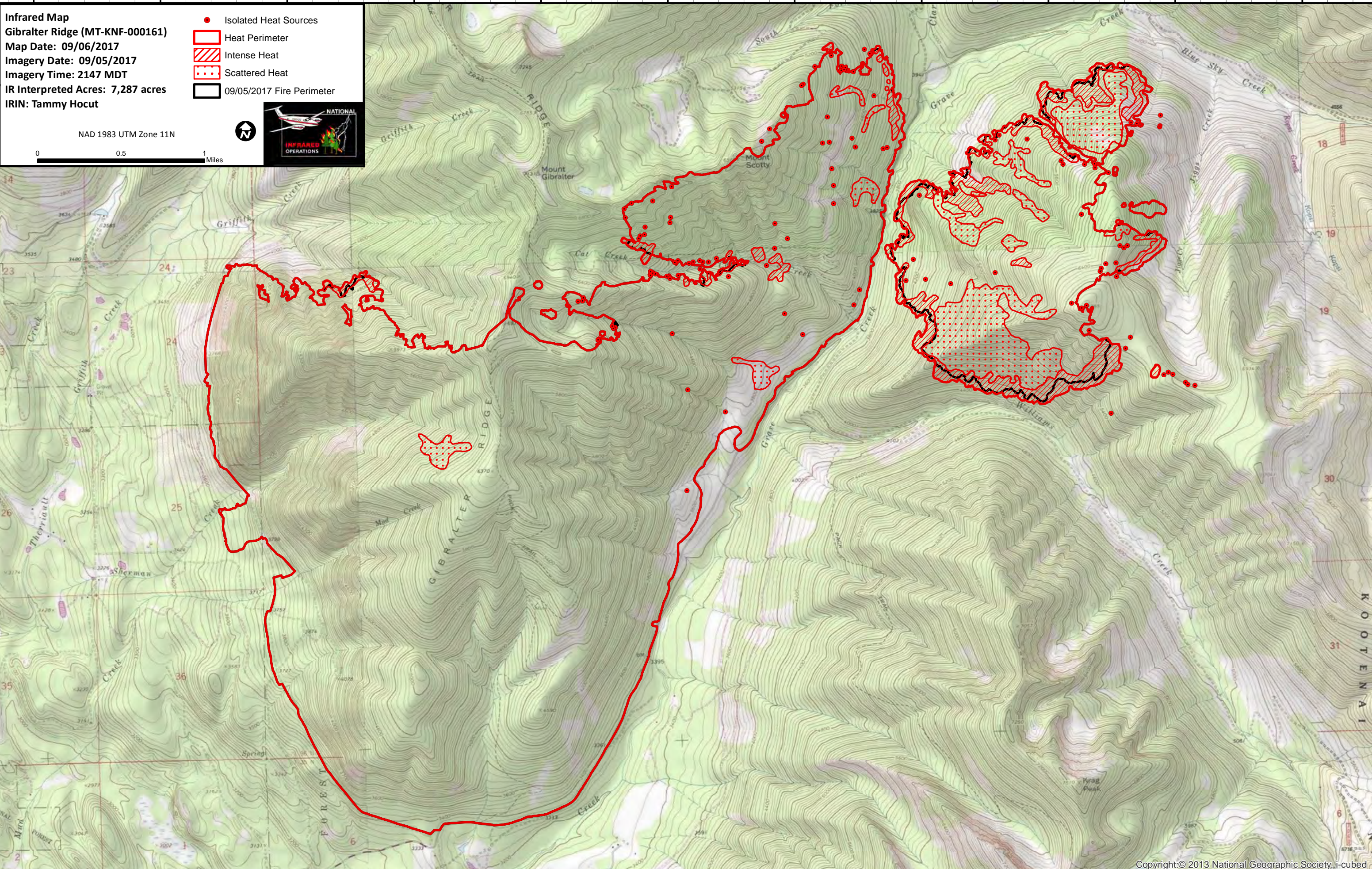
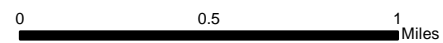


114°55'W 114°54'W 114°53'W 114°52'W 114°51'W 114°50'W 114°49'W 114°48'W 114°47'W 114°46'W 114°45'W

Infrared Map
Gibraltar Ridge (MT-KNF-000161)
Map Date: 09/06/2017
Imagery Date: 09/05/2017
Imagery Time: 2147 MDT
IR Interpreted Acres: 7,287 acres
IRIN: Tammy Hocut

- Isolated Heat Sources
- Heat Perimeter
- Intense Heat
- Scattered Heat
- 09/05/2017 Fire Perimeter

NAD 1983 UTM Zone 11N



48°53'N
48°52'N
48°51'N
48°50'N

48°53'N
48°52'N
48°51'N
48°50'N

114°55'W 114°54'W 114°53'W 114°52'W 114°51'W 114°50'W 114°49'W 114°48'W 114°47'W 114°46'W 114°45'W