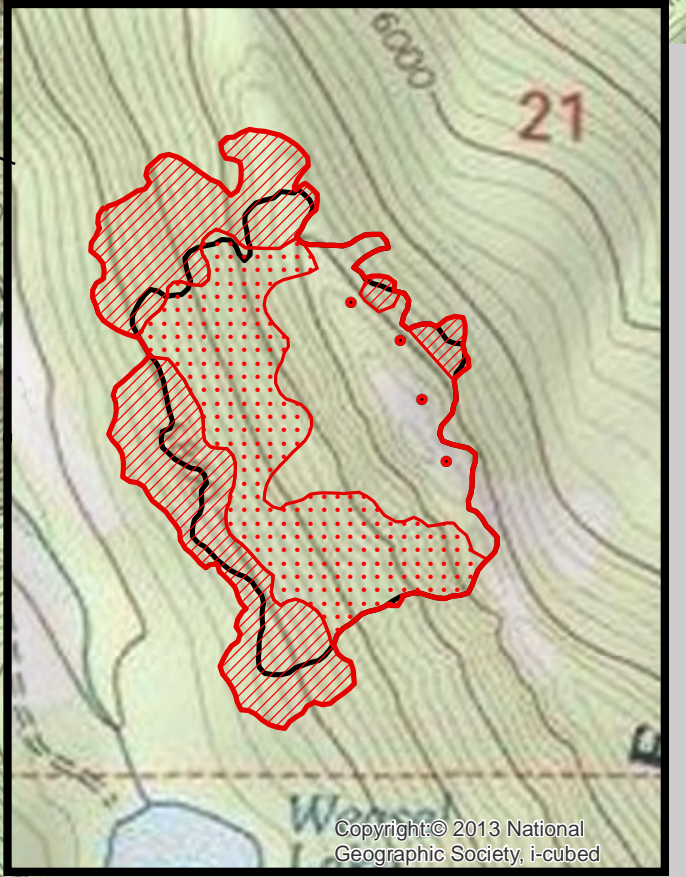
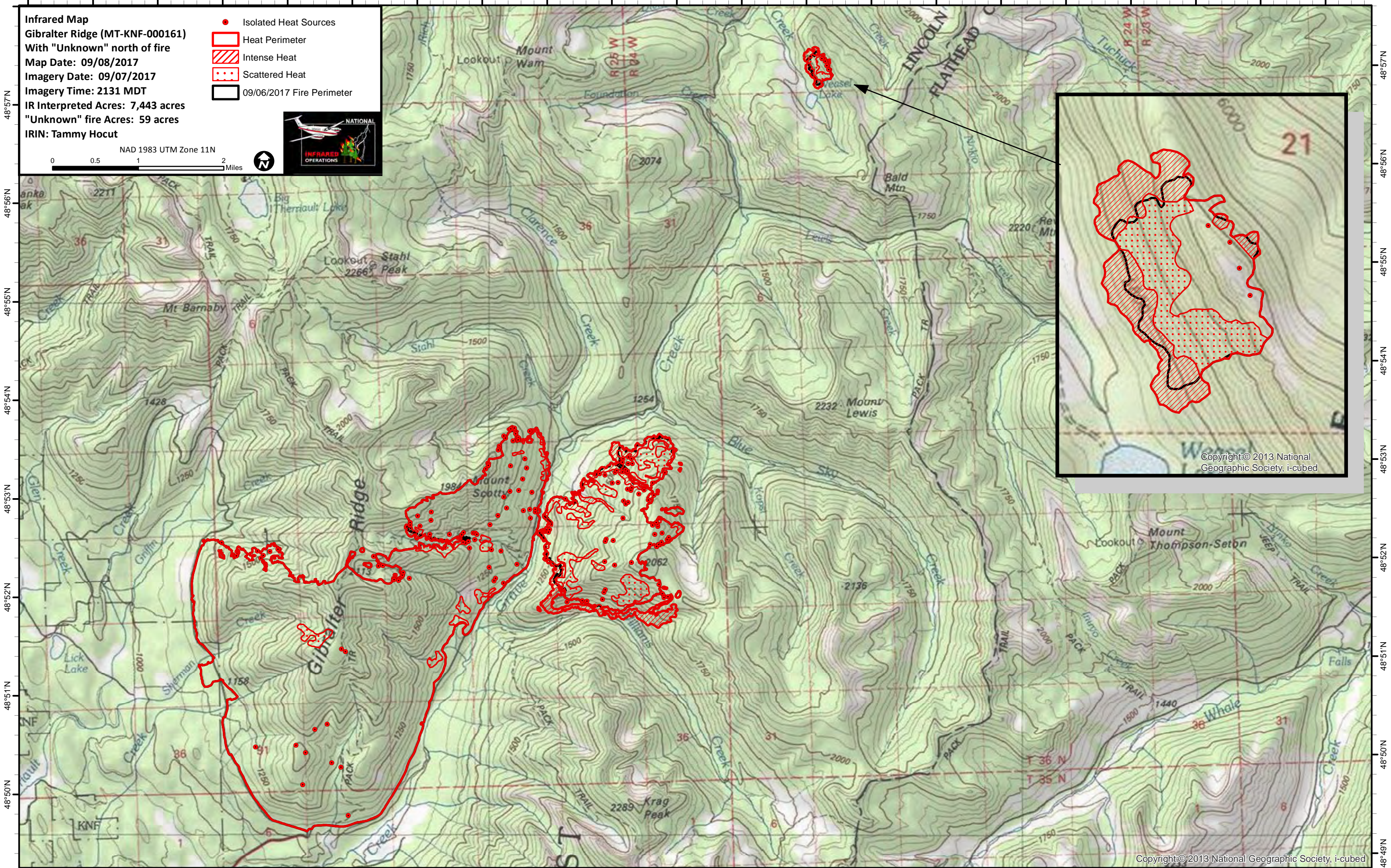


114°56'W 114°55'W 114°54'W 114°53'W 114°52'W 114°51'W 114°50'W 114°49'W 114°48'W 114°47'W 114°46'W 114°45'W 114°44'W 114°43'W 114°42'W 114°41'W 114°40'W 114°39'W 114°38'W 114°37'W 114°36'W

**Infrared Map**  
**Gibraltar Ridge (MT-KNF-000161)**  
With "Unknown" north of fire  
Map Date: 09/08/2017  
Imagery Date: 09/07/2017  
Imagery Time: 2131 MDT  
IR Interpreted Acres: 7,443 acres  
"Unknown" fire Acres: 59 acres  
IRIN: Tammy Hocut

- Isolated Heat Sources
- Heat Perimeter
- Intense Heat
- Scattered Heat
- 09/06/2017 Fire Perimeter

0 0.5 1 2 Miles



Copyright © 2013 National Geographic Society, i-cubed

Copyright © 2013 National Geographic Society, i-cubed

114°56'W 114°55'W 114°54'W 114°53'W 114°52'W 114°51'W 114°50'W 114°49'W 114°48'W 114°47'W 114°46'W 114°45'W 114°44'W 114°43'W 114°42'W 114°41'W 114°40'W 114°39'W 114°38'W 114°37'W 114°36'W

48°57'N  
48°56'N  
48°55'N  
48°54'N  
48°53'N  
48°52'N  
48°51'N  
48°50'N  
48°49'N

48°57'N  
48°56'N  
48°55'N  
48°54'N  
48°53'N  
48°52'N  
48°51'N  
48°50'N  
48°49'N