

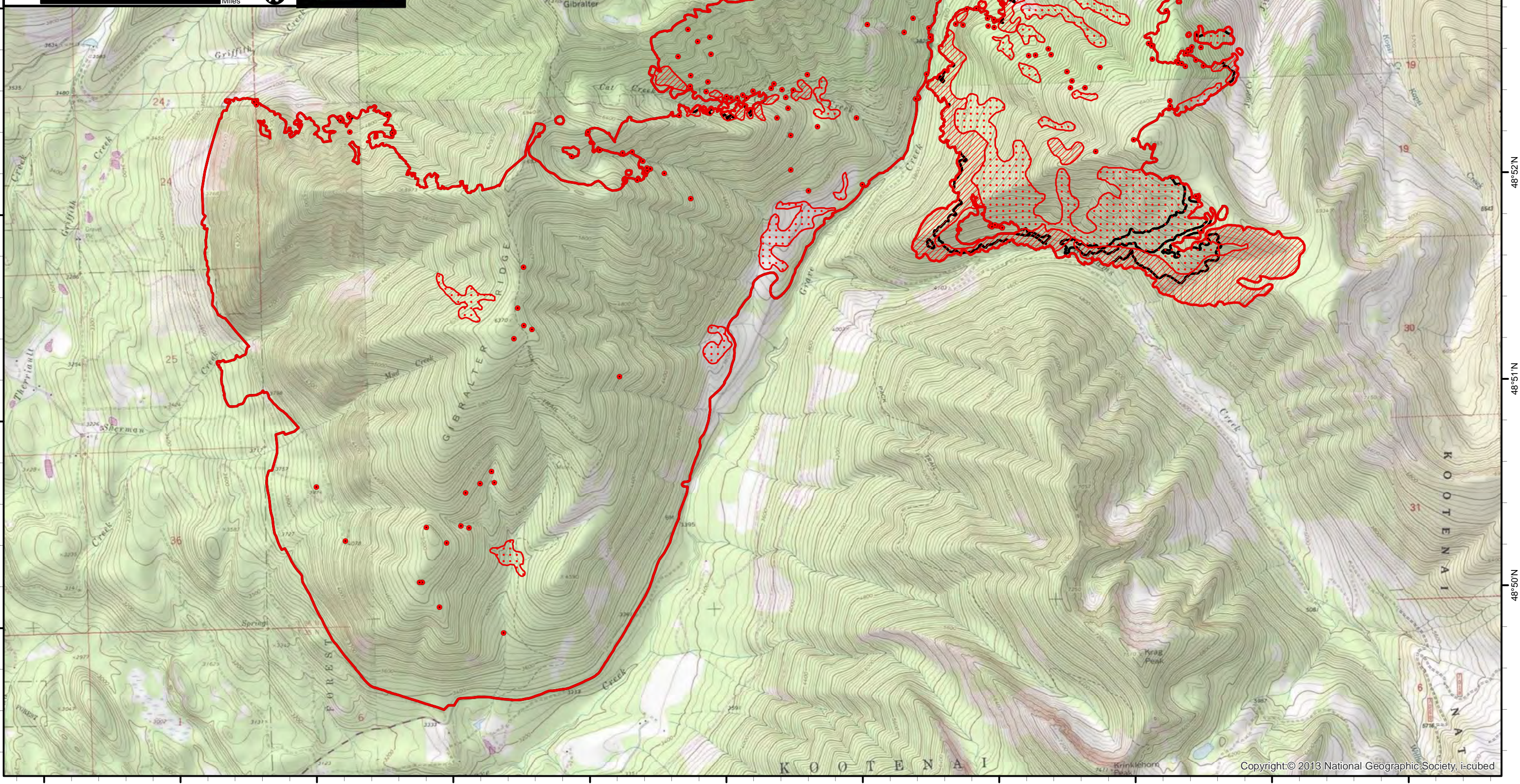
114°55'W 114°54'W 114°53'W 114°52'W 114°51'W 114°50'W 114°49'W 114°48'W 114°47'W 114°46'W 114°45'W

Infrared Map
Gibraltar Ridge (MT-KNF-000161)
Map Date: 09/09/2017
Imagery Date: 09/09/2017
Imagery Time: 0023 MDT
IR Interpreted Acres: 7,719 acres
IRIN: Tammy Hocut

- Isolated Heat Sources
- Heat Perimeter
- Intense Heat
- Scattered Heat
- 09/08/2017 Fire Perimeter

NAD 1983 UTM Zone 11N

0 0.5 1 Miles



114°55'W 114°54'W 114°53'W 114°52'W 114°51'W 114°50'W 114°49'W 114°48'W 114°47'W 114°46'W 114°45'W