
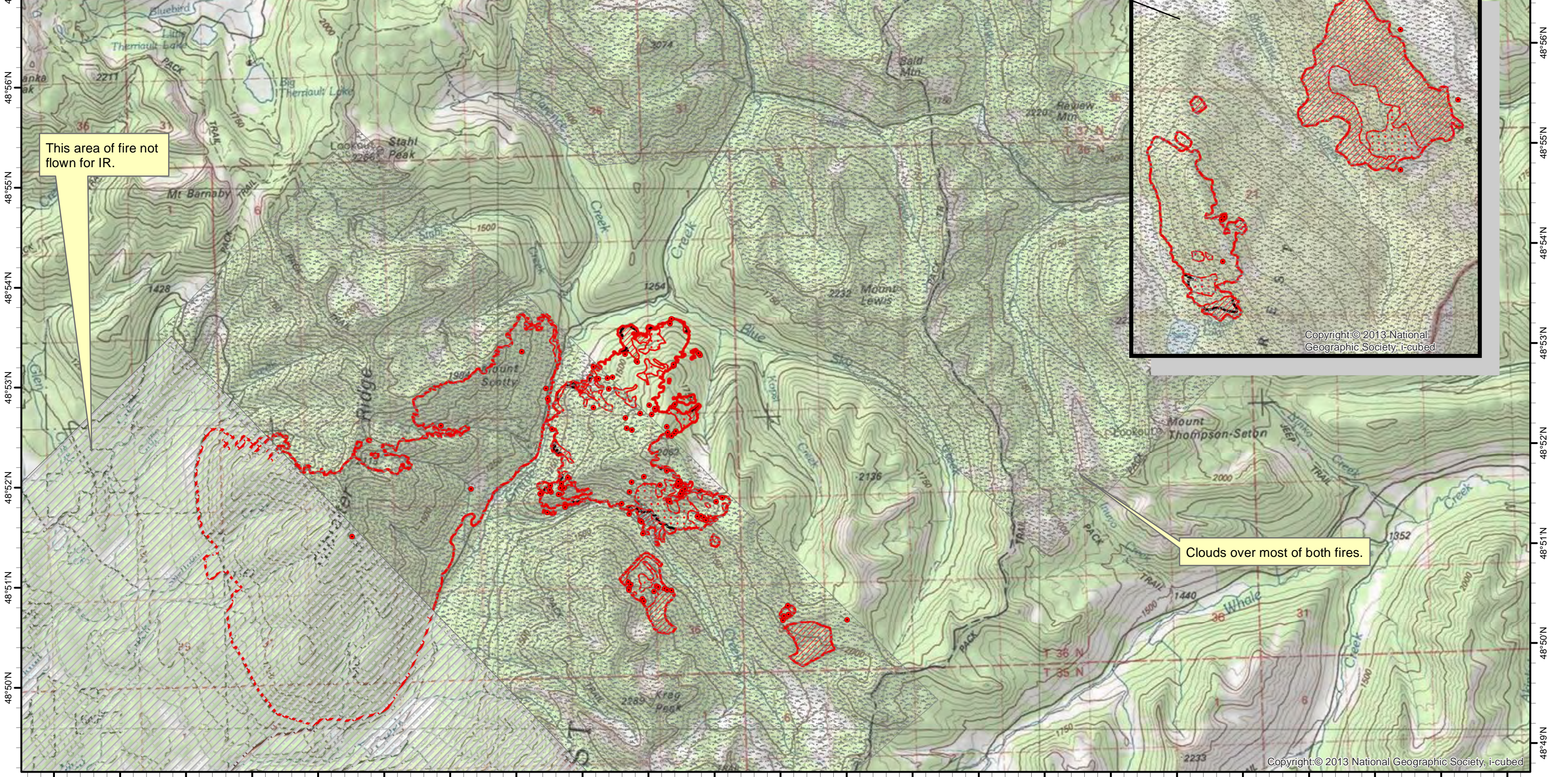


114°56'W 114°55'W 114°54'W 114°53'W 114°52'W 114°51'W 114°50'W 114°49'W 114°48'W 114°47'W 114°46'W 114°45'W 114°44'W 114°43'W 114°42'W 114°41'W 114°40'W 114°39'W 114°38'W 114°37'W 114°36'W 114°35'W 114°34'W

Infrared Map
Gibraltar Ridge (MT-KNF-000161) and Weasel fire
 Map Date: 09/10/2017
 Imagery Date: 09/10/2017
 Imagery Time: 0412 MDT
 Gibraltar Ridge Acres: 8,115 acres
 Weasel Fire Acres: 316 acres
 IRIN: Tammy Hocut

- Isolated Heat Sources
- Heat Perimeter
- Intense Heat
- Scattered Heat
- 09/09/2017 Fire Perimeter

NAD 1983 UTM Zone 11N
 0 0.5 1 2 Miles

This area of fire not flow for IR.

Clouds over most of both fires.

Copyright © 2013 National Geographic Society, i-cubed

Copyright © 2013 National Geographic Society, i-cubed

114°56'W 114°55'W 114°54'W 114°53'W 114°52'W 114°51'W 114°50'W 114°49'W 114°48'W 114°47'W 114°46'W 114°45'W 114°44'W 114°43'W 114°42'W 114°41'W 114°40'W 114°39'W 114°38'W 114°37'W 114°36'W 114°35'W 114°34'W