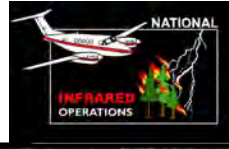


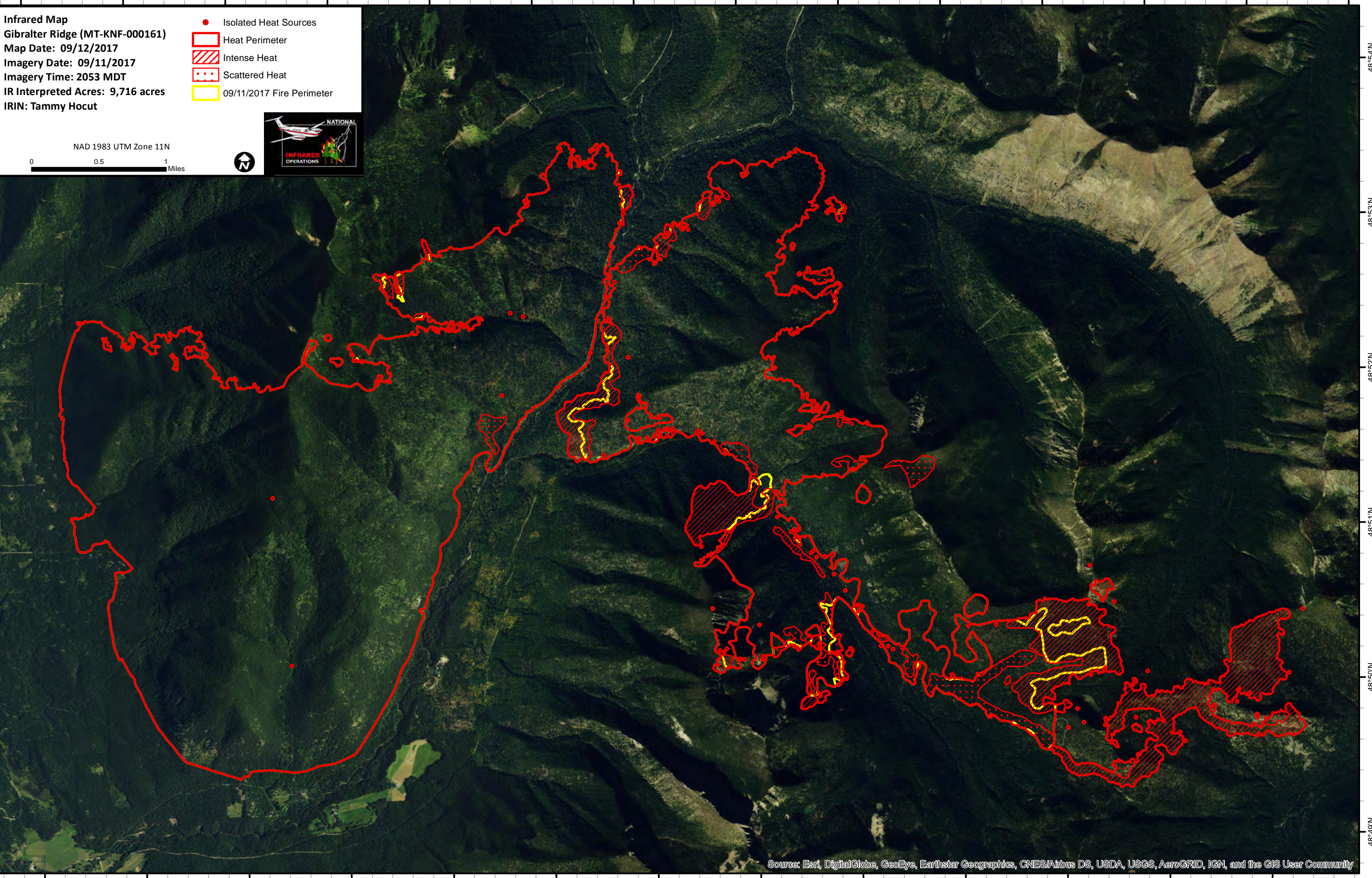
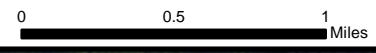
114°54'W 114°53'W 114°52'W 114°51'W 114°50'W 114°49'W 114°48'W 114°47'W 114°46'W 114°45'W 114°44'W 114°43'W 114°42'W 114°41'W

Infrared Map
Gibraltar Ridge (MT-KNF-000161)
Map Date: 09/12/2017
Imagery Date: 09/11/2017
Imagery Time: 2053 MDT
IR Interpreted Acres: 9,716 acres
IRIN: Tammy Hocut

- Isolated Heat Sources
- Heat Perimeter
- Intense Heat
- Scattered Heat
- 09/11/2017 Fire Perimeter



NAD 1983 UTM Zone 11N



114°54'W 114°53'W 114°52'W 114°51'W 114°50'W 114°49'W 114°48'W 114°47'W 114°46'W 114°45'W 114°44'W 114°43'W 114°42'W

Source: Esri, DigitalGlobe, GeoEye, Earthstar Geographics, CNES/Airbus DS, USDA, USGS, AeroGRID, IGN, and the GIS User Community

48°54'N
48°53'N
48°52'N
48°51'N
48°50'N
48°49'N

48°54'N
48°53'N
48°52'N
48°51'N
48°50'N
48°49'N