

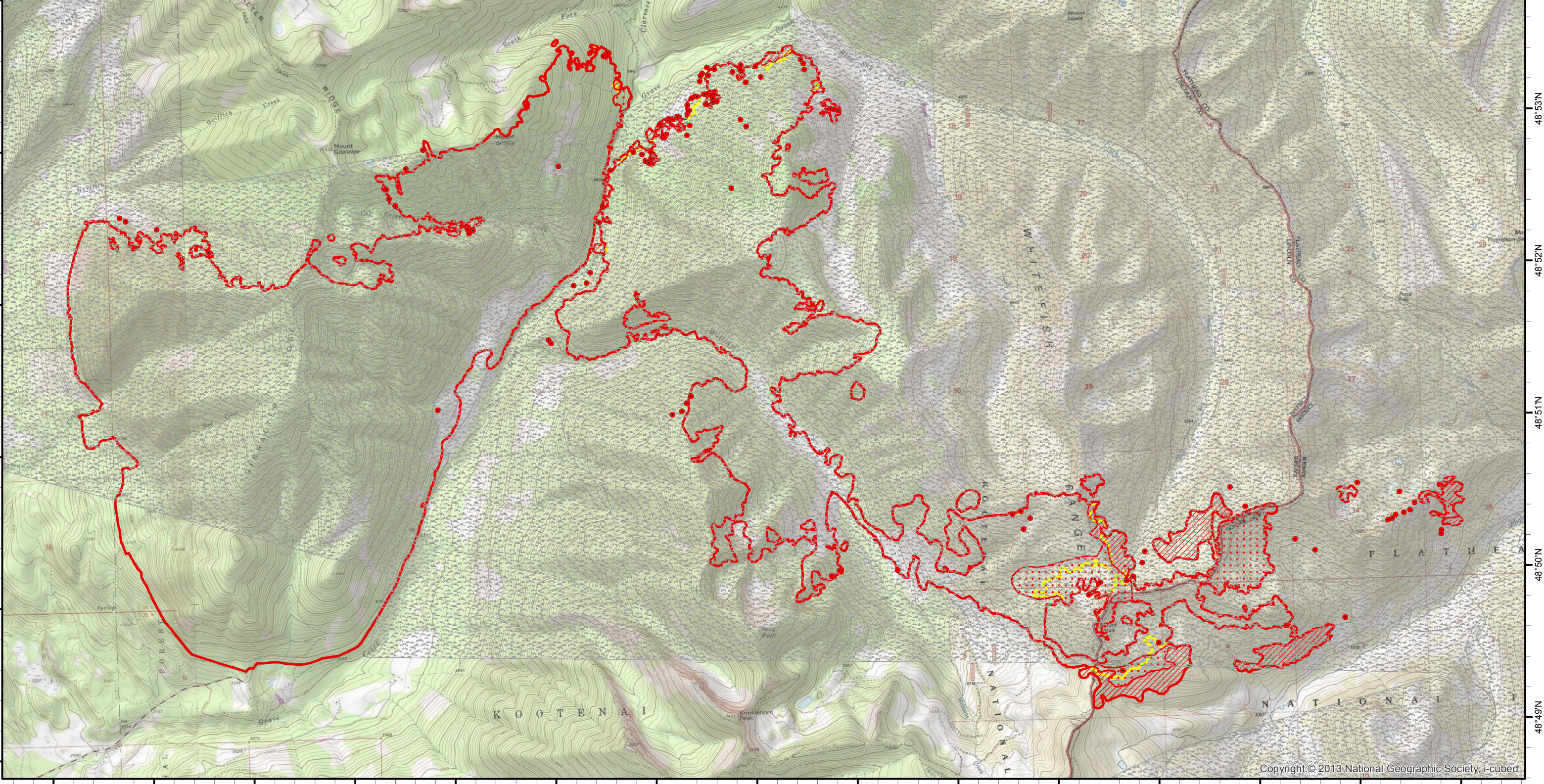
114°54'W 114°53'W 114°52'W 114°51'W 114°50'W 114°49'W 114°48'W 114°47'W 114°46'W 114°45'W 114°44'W 114°43'W 114°42'W 114°41'W 114°40'W

Infrared Map
Gibraltar Ridge (MT-KNF-000161)
Map Date: 09/14/2017
Imagery Date: 09/13/2017
Imagery Time: 2026 MDT
IR Interpreted Acres: 10,147 acres
IRIN: Tammy Hocut

- Isolated Heat Sources
- Heat Perimeter
- Intense Heat
- Scattered Heat
- 09/11/2017 Fire Perimeter

NAD 1983 UTM Zone 11N

0 0.5 1 Miles



114°54'W 114°53'W 114°52'W 114°51'W 114°50'W 114°49'W 114°48'W 114°47'W 114°46'W 114°45'W 114°44'W 114°43'W 114°42'W 114°41'W 114°40'W