



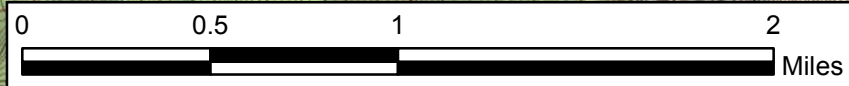
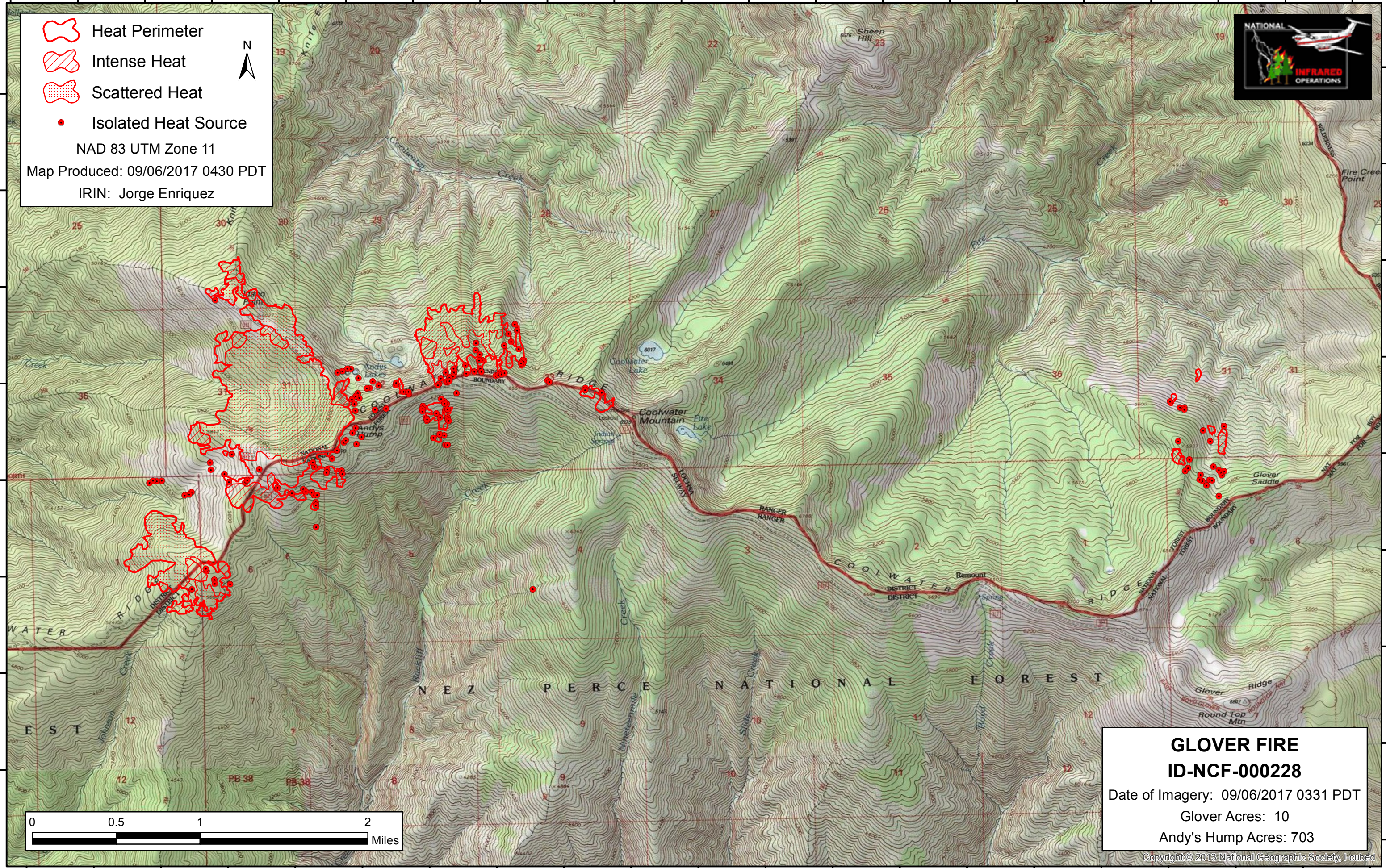


115°32'0"W 115°31'30"W 115°31'0"W 115°30'30"W 115°30'0"W 115°29'30"W 115°29'0"W 115°28'30"W 115°28'0"W 115°27'30"W 115°27'0"W 115°26'30"W 115°26'0"W 115°25'30"W 115°25'0"W 115°24'30"W 115°24'0"W 115°23'30"W 115°23'0"W 115°22'30"W 115°22'0"W

46°11'0"N  
46°10'30"N  
46°10'0"N  
46°9'30"N  
46°9'0"N  
46°8'30"N  
46°8'0"N  
46°7'30"N  
46°7'0"N

46°11'0"N  
46°10'30"N  
46°10'0"N  
46°9'30"N  
46°9'0"N  
46°8'30"N  
46°8'0"N  
46°7'30"N  
46°7'0"N

 Heat Perimeter  
 Intense Heat  
 Scattered Heat  
 Isolated Heat Source  
 NAD 83 UTM Zone 11  
 Map Produced: 09/06/2017 0430 PDT  
 IRIN: Jorge Enriquez



**GLOVER FIRE**  
**ID-NCF-000228**  
 Date of Imagery: 09/06/2017 0331 PDT  
 Glover Acres: 10  
 Andy's Hump Acres: 703

115°32'0"W 115°31'30"W 115°31'0"W 115°30'30"W 115°30'0"W 115°29'30"W 115°29'0"W 115°28'30"W 115°28'0"W 115°27'30"W 115°27'0"W 115°26'30"W 115°26'0"W 115°25'30"W 115°25'0"W 115°24'30"W 115°24'0"W 115°23'30"W 115°23'0"W 115°22'30"W 115°22'0"W