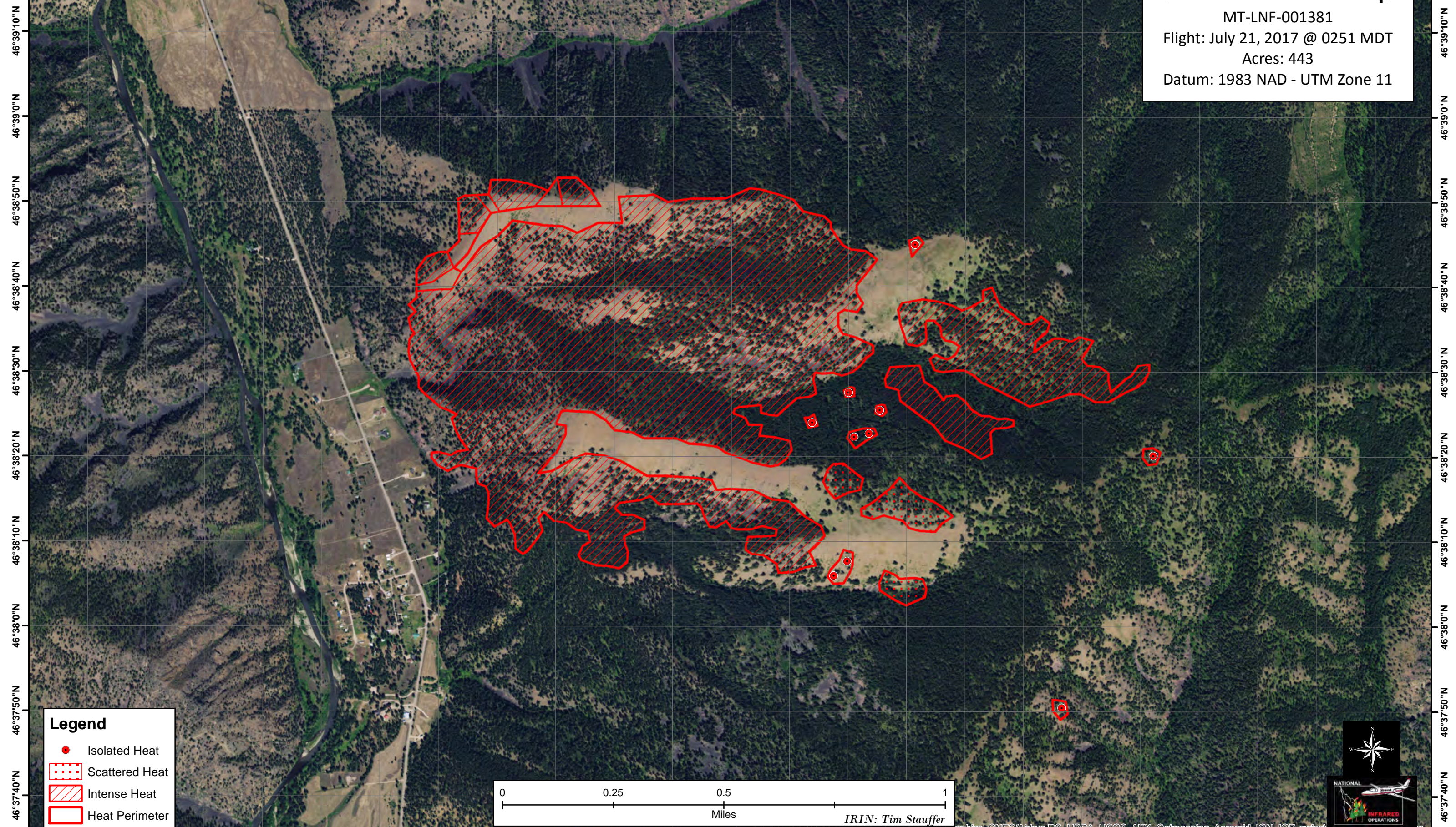


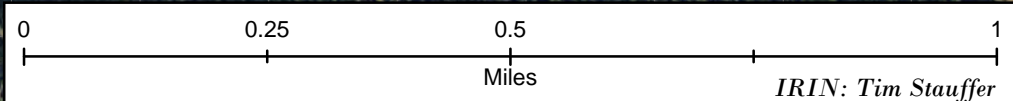
113°39'50"W 113°39'30"W 113°39'10"W 113°39'0"W 113°38'50"W 113°38'30"W 113°38'10"W 113°38'0"W 113°37'50"W 113°37'30"W 113°37'10"W 113°37'0"W 113°36'50"W 113°36'30"W 113°36'10"W 113°36'0"W



**Goat Creek Infrared Map**  
MT-LNF-001381  
Flight: July 21, 2017 @ 0251 MDT  
Acres: 443  
Datum: 1983 NAD - UTM Zone 11

**Legend**

- Isolated Heat
- ▤ Scattered Heat
- ▨ Intense Heat
- ▭ Heat Perimeter



IRIN: Tim Stauffer

Source: Esri, DigitalGlobe, GeoEye, Earthstar Geographics, CNES/Airbus DS, USDA, USGS, AEX, Getmapping, Aerogrid, IGN, IGP, swisstopo, etc.



113°39'30"W 113°39'10"W 113°39'0"W 113°38'50"W 113°38'30"W 113°38'10"W 113°38'0"W 113°37'50"W 113°37'30"W 113°37'10"W 113°37'0"W 113°36'50"W 113°36'30"W 113°36'10"W 113°36'0"W