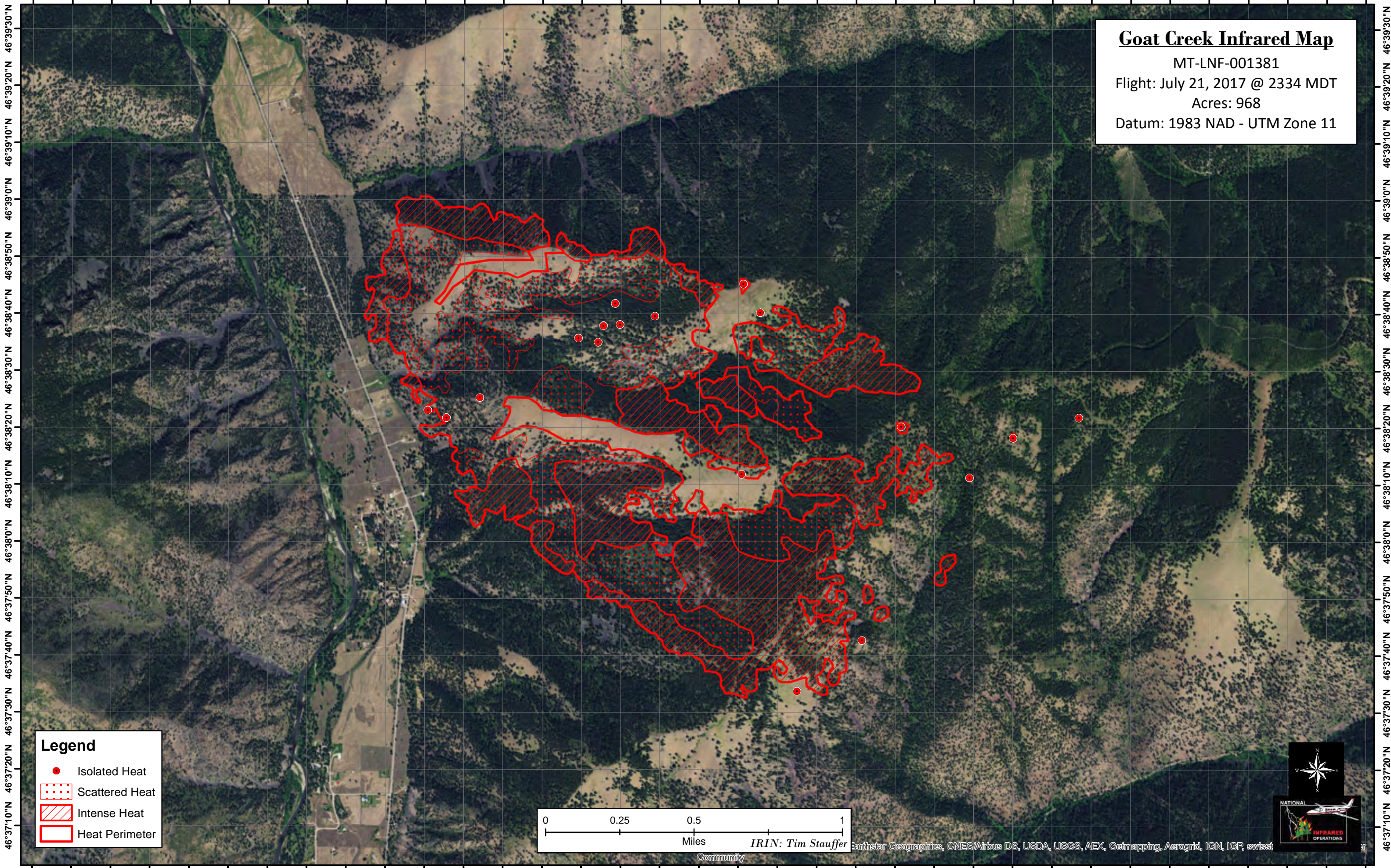


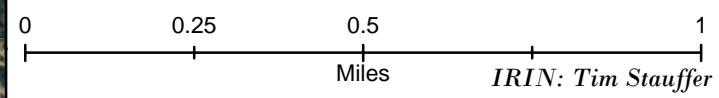
113°40'20"W 113°40'0"W 113°39'40"W 113°39'20"W 113°39'0"W 113°38'40"W 113°38'20"W 113°38'0"W 113°37'40"W 113°37'20"W 113°37'0"W 113°36'40"W 113°36'20"W 113°36'0"W 113°35'40"W 113°35'20"W 113°35'0"W 113°34'40"W



**Goat Creek Infrared Map**  
MT-LNF-001381  
Flight: July 21, 2017 @ 2334 MDT  
Acres: 968  
Datum: 1983 NAD - UTM Zone 11

**Legend**

- Isolated Heat
- ▤ Scattered Heat
- ▨ Intense Heat
- ▭ Heat Perimeter



113°40'20"W 113°40'0"W 113°39'40"W 113°39'20"W 113°39'0"W 113°38'40"W 113°38'20"W 113°38'0"W 113°37'40"W 113°37'20"W 113°37'0"W 113°36'40"W 113°36'20"W 113°36'0"W 113°35'40"W 113°35'20"W 113°35'0"W 113°34'40"W