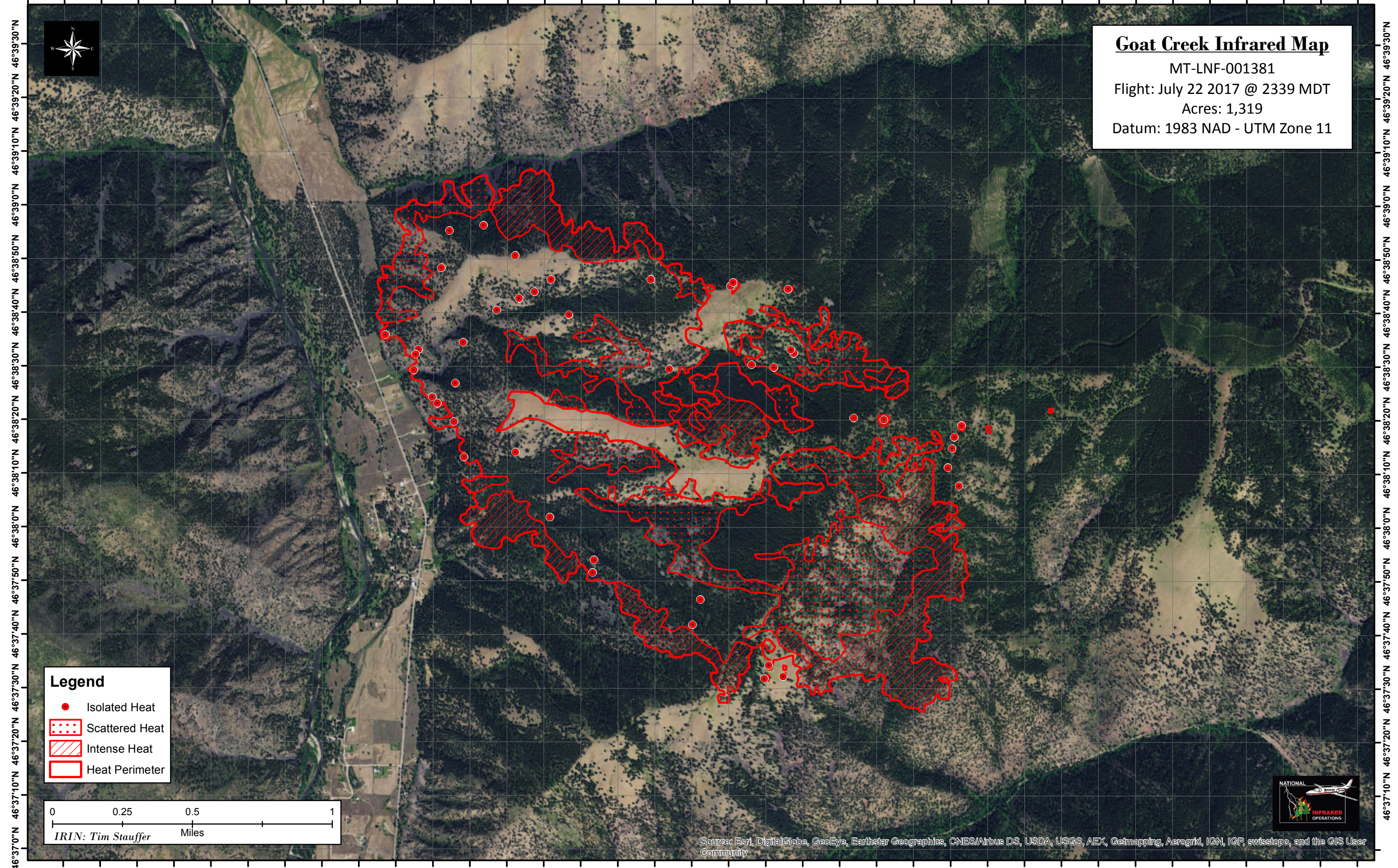


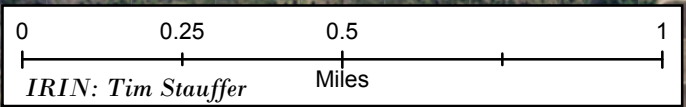
113°40'30"W 113°40'10"W 113°39'50"W 113°39'30"W 113°39'10"W 113°38'50"W 113°38'30"W 113°38'10"W 113°37'50"W 113°37'30"W 113°37'10"W 113°36'50"W 113°36'30"W 113°36'10"W 113°35'50"W 113°35'30"W 113°35'10"W 113°34'50"W 113°34'30"W



Goat Creek Infrared Map
MT-LNF-001381
Flight: July 22 2017 @ 2339 MDT
Acres: 1,319
Datum: 1983 NAD - UTM Zone 11

Legend

- Isolated Heat
- Scattered Heat
- Intense Heat
- Heat Perimeter



Source: Esri, DigitalGlobe, GeoEye, Earthstar Geographics, CNES/Airbus DS, USDA, USGS, AEX, Getmapping, Aerogrid, IGN, IGP, swisstopo, and the GIS User Community

113°40'10"W 113°39'50"W 113°39'30"W 113°39'10"W 113°38'50"W 113°38'30"W 113°38'10"W 113°37'50"W 113°37'30"W 113°37'10"W 113°36'50"W 113°36'30"W 113°36'10"W 113°35'50"W 113°35'30"W 113°35'10"W 113°34'50"W 113°34'30"W