





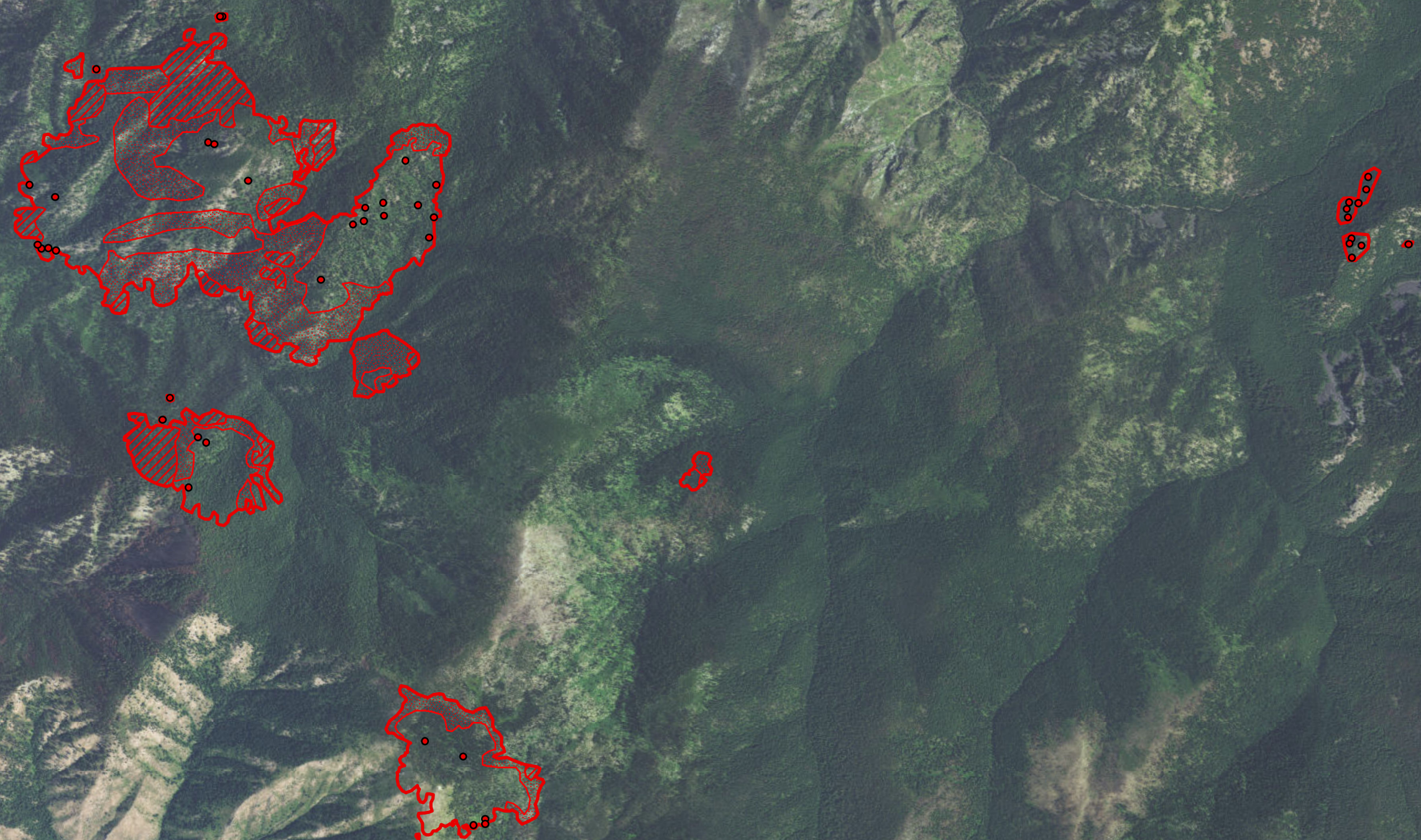
114°48'W 114°47'W 114°46'W 114°45'W 114°44'W 114°43'W 114°42'W 114°41'W

Green Ridge CPX
North
ID-BOF-017243
Infrared Heat Sources
1:30,000

Legend

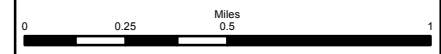
-  Heat Perimeter
-  Intense Heat Areas
-  Scattered Heat Areas
-  Isolated Heat Sources

NAD 1983 UTM Zone 11N



46°1'N
46°0'N
45°59'N
45°58'N

114°48'W 114°47'W 114°46'W 114°45'W 114°44'W 114°43'W 114°42'W 114°41'W



Source: Esri, DigitalGlobe, GeoEye, Earthstar Geographics, CNES/Airbus DS, USDA, USGS, AEX, Getmapping, Aerogrid, IGN, IGP, swisstopo, and the GIS User Community

IR Interpreter: Brian Monroe
IR interpreted acres: 4,789 (Cx)
Date:09/09/2017
Scan Date/Time: 09/08/17 2100 hrs