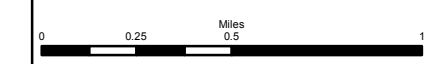
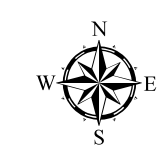
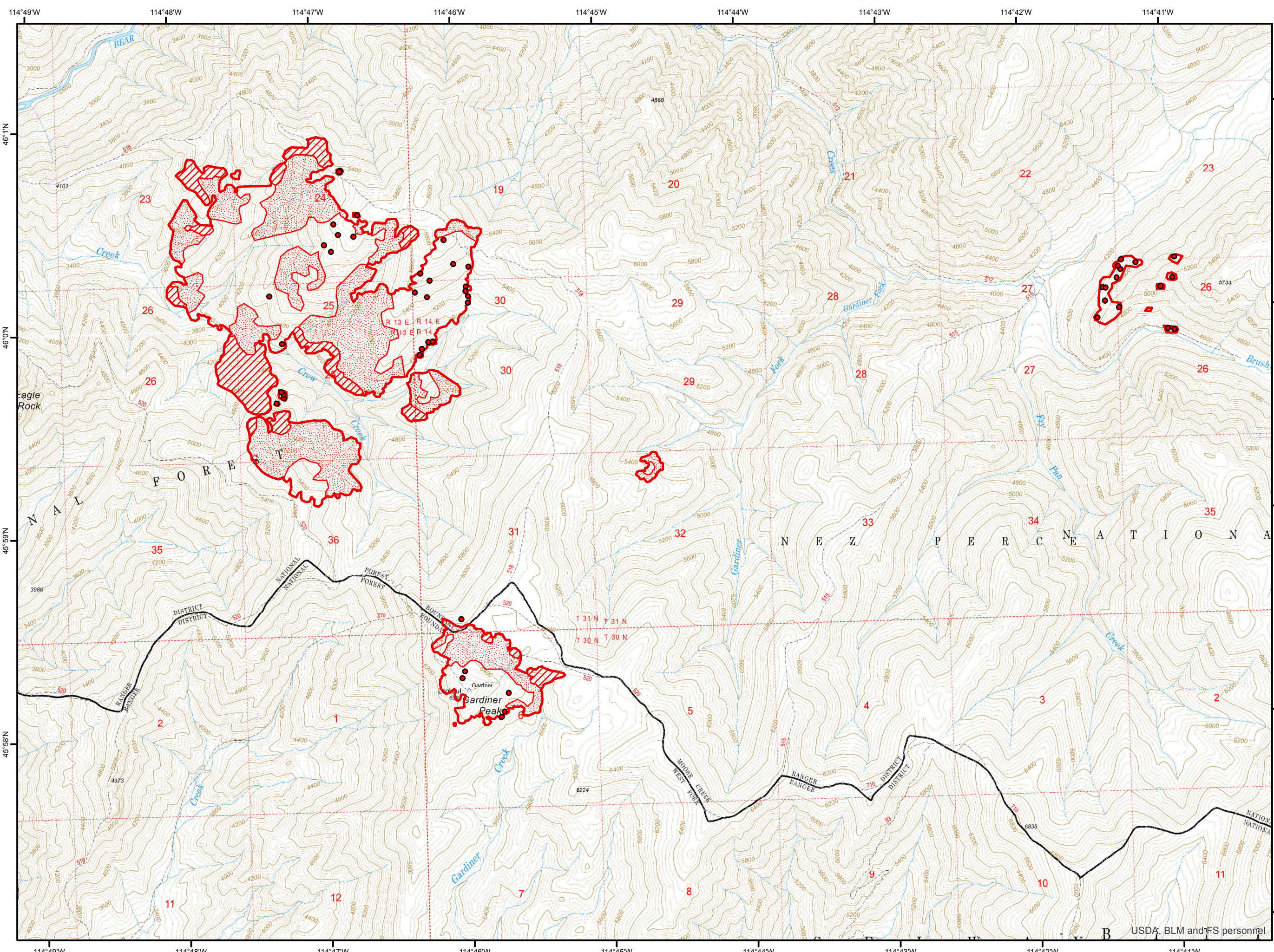


Green Ridge CPX
North
ID-BOF-017243
Infrared Heat Sources
1:32,000

Heat Perimeter
Intense Heat Areas
Scattered Heat Areas
Isolated Heat Sources
NAD 1983 UTM Zone 11N



IR Interpreter: Brian Monroe
IR interpreted acres: 5,783 (Cx)
Date: 09/10/2017
Scan Date/Time: 09/10/17 0017 hrs

USDA, BLM and FS personnel