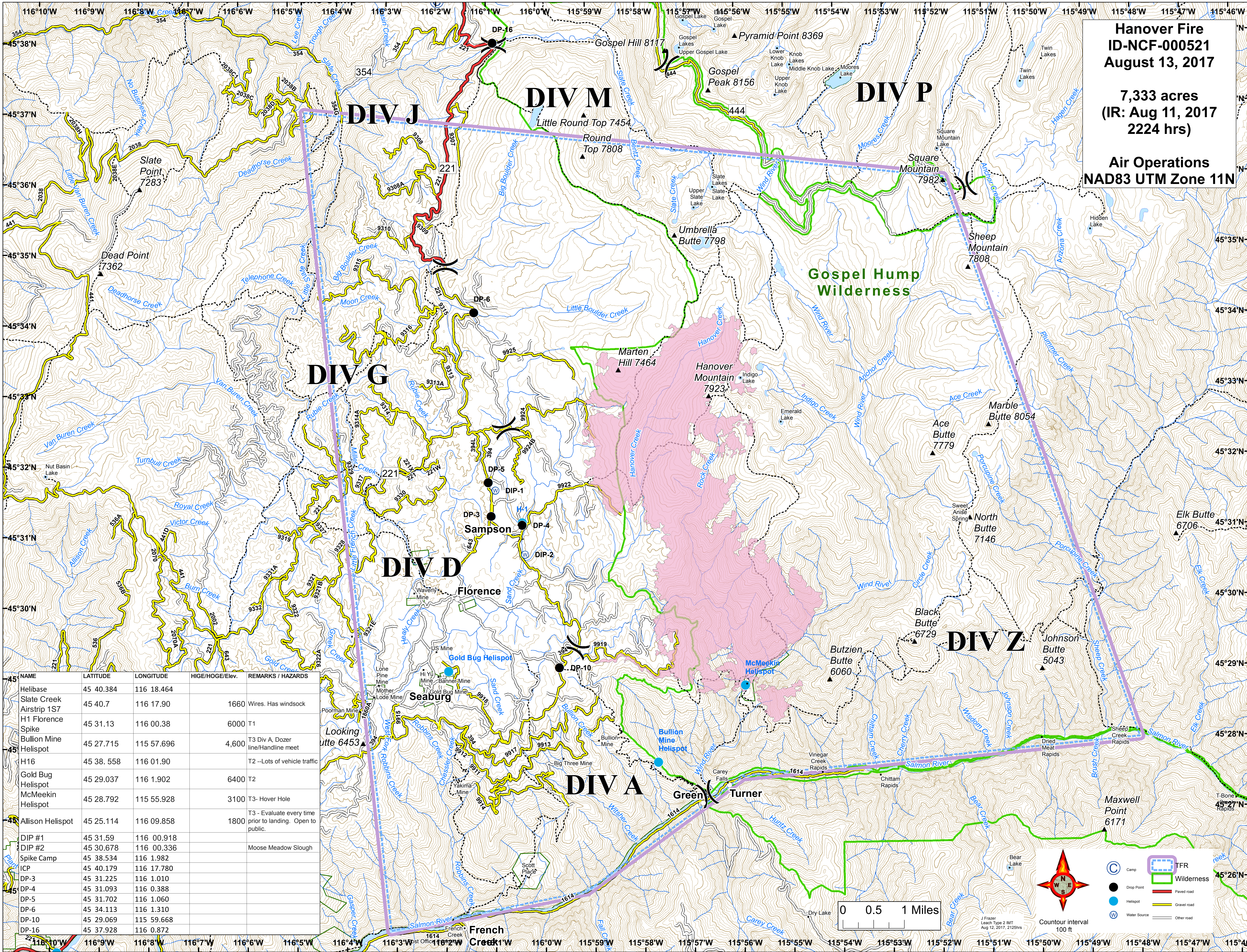


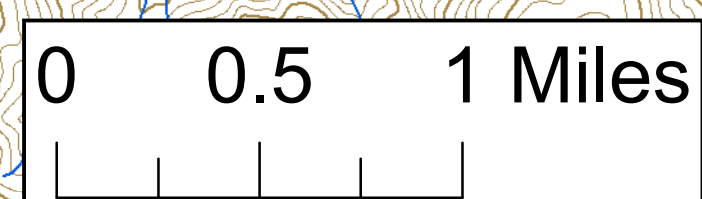
Hanover Fire
ID-NCF-000521
August 13, 2017

7,333 acres
 (IR: Aug 11, 2017
 2224 hrs)

Air Operations
NAD83 UTM Zone 11N



NAME	LATITUDE	LONGITUDE	HIGE/HOGE/Elev.	REMARKS / HAZARDS
Helibase	45 40.384	116 18.464		
Slate Creek Airstrip 1S7	45 40.7	116 17.90	1660	Wires. Has windsock
H1 Florence Spike	45 31.13	116 00.38	6000	T1
Bullion Mine Helispot	45 27.715	115 57.696	4,600	T3 Div A, Dozer line/Handline meet
H16	45 38.558	116 01.90		T2 --Lots of vehicle traffic
Gold Bug Helispot	45 29.037	116 1.902	6400	T2
McMeekin Helispot	45 28.792	115 55.928	3100	T3- Hover Hole
Allison Helispot	45 25.114	116 09.858	1800	T3 - Evaluate every time prior to landing. Open to public.
DIP #1	45 31.59	116 00.918		
DIP #2	45 30.678	116 00.336		Moose Meadow Slough
Spike Camp	45 38.534	116 1.982		
ICP	45 40.179	116 17.780		
DP-3	45 31.225	116 1.010		
DP-4	45 31.093	116 0.388		
DP-5	45 31.702	116 1.060		
DP-6	45 34.113	116 1.310		
DP-10	45 29.069	115 59.668		
DP-16	45 37.928	116 0.872		



Compass rose showing North (N), South (S), East (E), and West (W).

- Camp
- Drop Point
- Helispot
- Water Source
- ▭ TFR
- ▭ Wilderness
- ▭ Paved road
- ▭ Gravel road
- ▭ Other road

J Frazer
 Leach Type 2 IMT
 Aug 12, 2017, 2125hrs

Countour interval
 100 ft