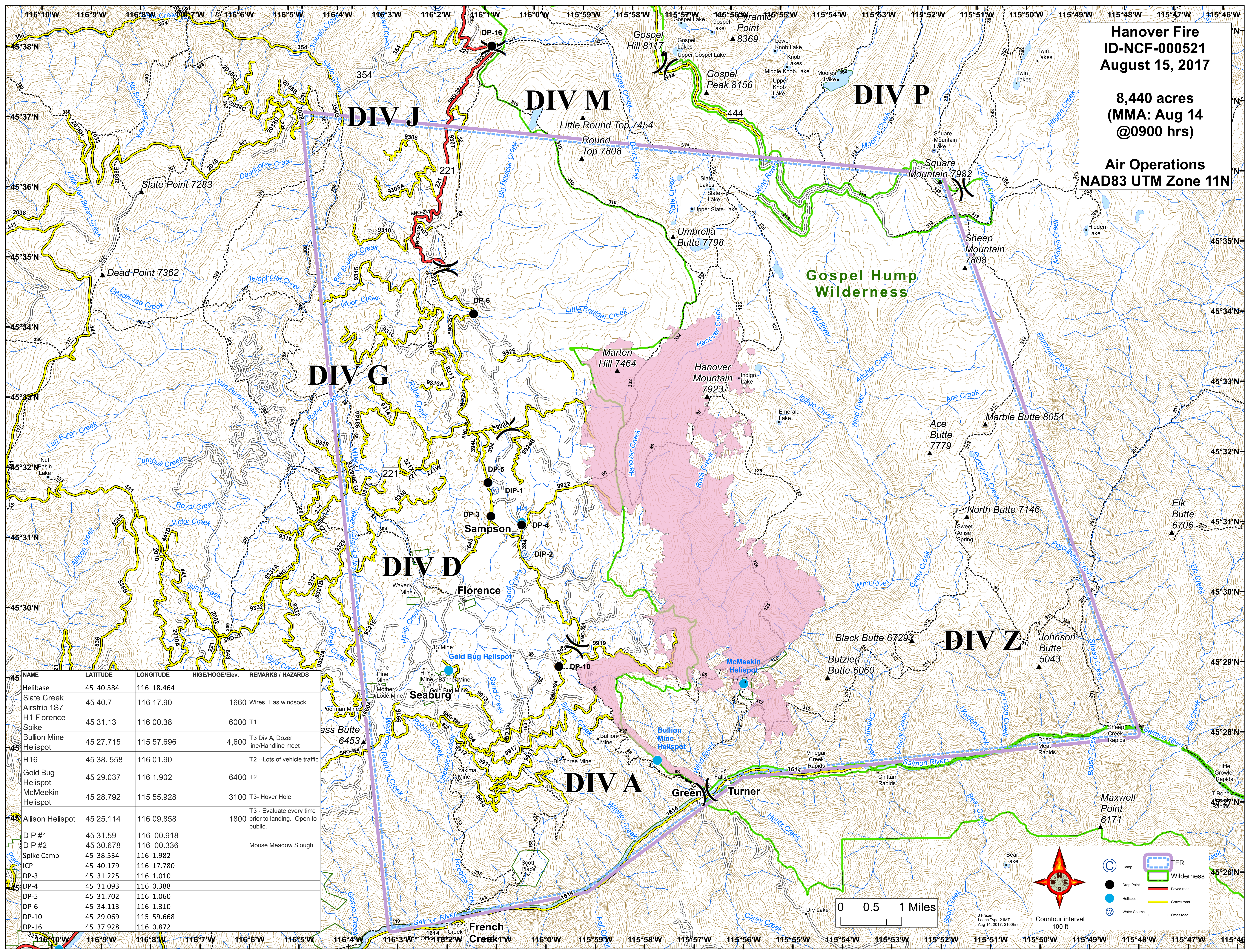


**Hanover Fire**  
**ID-NCF-000521**  
**August 15, 2017**

**8,440 acres**  
**(MMA: Aug 14**  
**@0900 hrs)**

**Air Operations**  
**NAD83 UTM Zone 11N**



| NAME                     | LATITUDE  | LONGITUDE  | HIGE/HOGE/Elev. | REMARKS / HAZARDS  |
|--------------------------|-----------|------------|-----------------|--|
| Helibase                 | 45 40.384 | 116 18.464 |                 |  |
| Slate Creek Airstrip 1S7 | 45 40.7   | 116 17.90  | 1660            | Wires. Has windsock  |
| H1 Florence Spike        | 45 31.13  | 116 00.38  | 6000            | T1   |
| Bullion Mine Helispot    | 45 27.715 | 115 57.696 | 4,600           | T3 Div A, Dozer line/Handline meet                         |
| H16                      | 45 38.558 | 116 01.90  |                 | T2 --Lots of vehicle traffic                               |
| Gold Bug Helispot        | 45 29.037 | 116 1.902  | 6400            | T2   |
| McMeekin Helispot        | 45 28.792 | 115 55.928 | 3100            | T3- Hover Hole   |
| Allison Helispot         | 45 25.114 | 116 09.858 | 1800            | T3 - Evaluate every time prior to landing. Open to public. |
| DIP #1                   | 45 31.59  | 116 00.918 |                 |  |
| DIP #2                   | 45 30.678 | 116 00.336 |                 | Moose Meadow Slough  |
| Spike Camp               | 45 38.534 | 116 1.982  |                 |  |
| ICP                      | 45 40.179 | 116 17.780 |                 |  |
| DP-3                     | 45 31.225 | 116 1.010  |                 |  |
| DP-4                     | 45 31.093 | 116 0.388  |                 |  |
| DP-5                     | 45 31.702 | 116 1.060  |                 |  |
| DP-6                     | 45 34.113 | 116 1.310  |                 |  |
| DP-10                    | 45 29.069 | 115 59.668 |                 |  |
| DP-16                    | 45 37.928 | 116 0.872  |                 |  |

J Frazer  
 Leach Type 2 IMT  
 Aug 14, 2017, 2100hrs