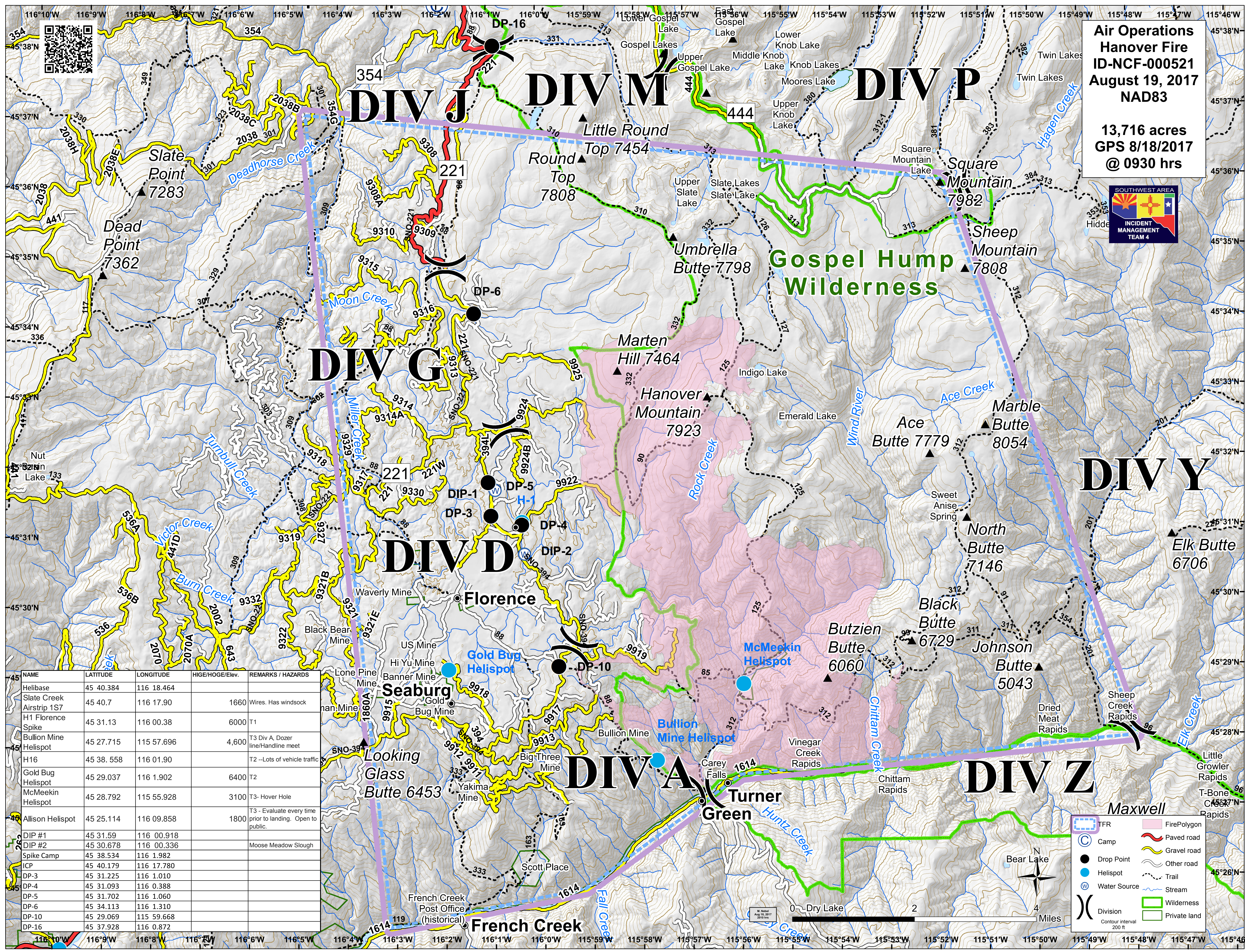


Air Operations
Hanover Fire
ID-NCF-000521
August 19, 2017
NAD83

13,716 acres
GPS 8/18/2017
@ 0930 hrs



NAME	LATITUDE	LONGITUDE	HIGE/HOGE/Elev.	REMARKS / HAZARDS
Helibase	45 40.384	116 18.464		
Slate Creek Airstrip 1S7	45 40.7	116 17.90	1660	Wires. Has windsock
H1 Florence Spike	45 31.13	116 00.38	6000	T1
Bullion Mine Helispot	45 27.715	115 57.696	4,600	T3 Div A, Dozer line/Handline meet
H16	45 38.558	116 01.90		T2 - Lots of vehicle traffic
Gold Bug Helispot	45 29.037	116 1.902	6400	T2
McMeekin Helispot	45 28.792	115 55.928	3100	T3- Hover Hole
Allison Helispot	45 25.114	116 09.858	1800	T3 - Evaluate every time prior to landing. Open to public.
DIP #1	45 31.59	116 00.918		
DIP #2	45 30.678	116 00.336		Moose Meadow Slough
Spike Camp	45 38.534	116 1.982		
ICP	45 40.179	116 17.780		
DP-3	45 31.225	116 1.010		
DP-4	45 31.093	116 0.388		
DP-5	45 31.702	116 1.060		
DP-6	45 34.113	116 1.310		
DP-10	45 29.069	115 59.668		
DP-16	45 37.928	116 0.872		

Legend

- TFR (Thick dashed blue line)
- Camp (Blue circle with 'C')
- Drop Point (Black circle with 'DP')
- Helispot (Blue circle with 'H')
- Water Source (Blue circle with 'W')
- Division (Black line with 'D')
- Fire Polygon (Pink shaded area)
- Paved road (Yellow line)
- Gravel road (Orange line)
- Other road (Red line)
- Trail (Dashed black line)
- Stream (Blue line)
- Wilderness (Green shaded area)
- Private land (White shaded area)

Scale: 0 to 4 Miles