

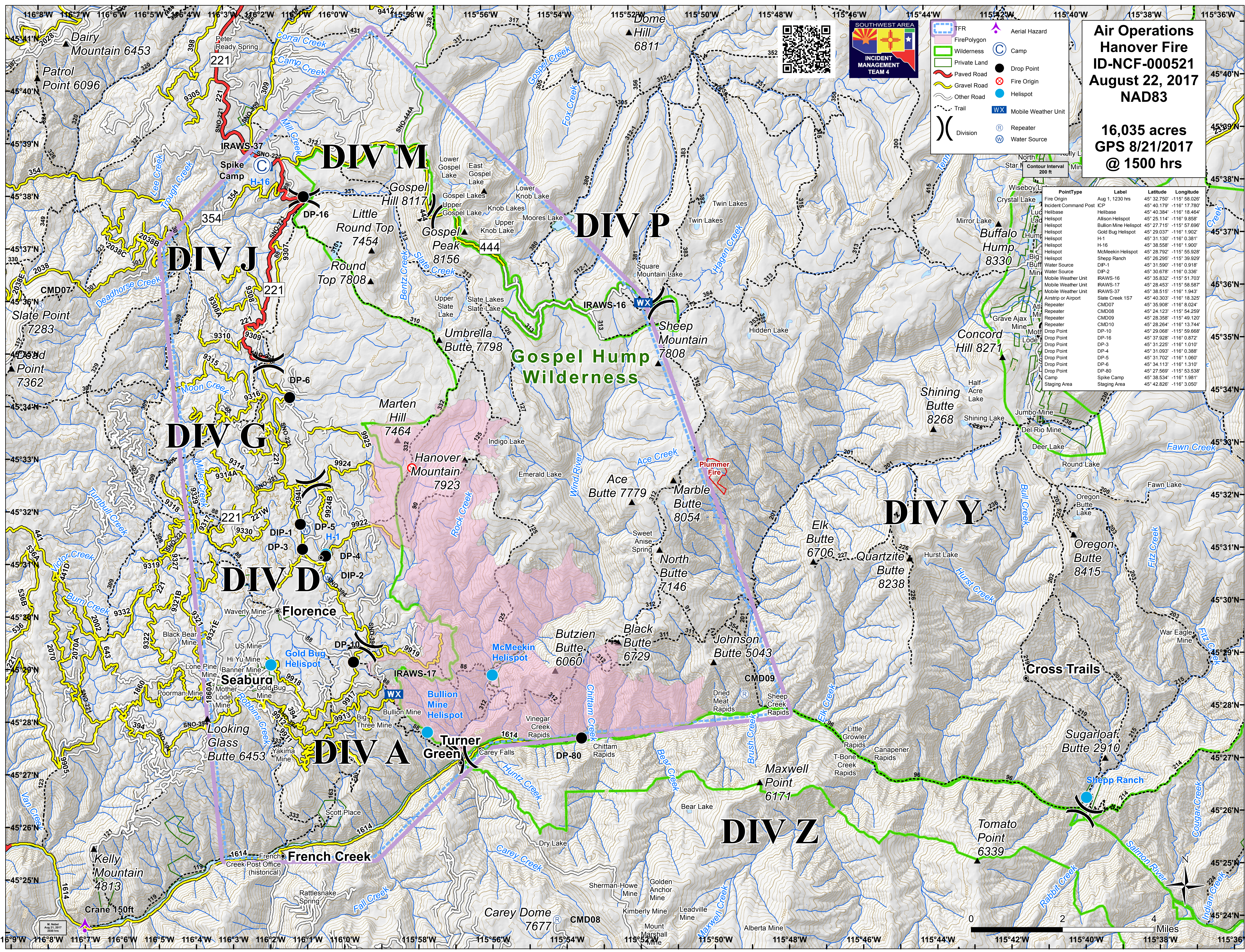
Air Operations Hanover Fire ID-NCF-000521 August 22, 2017 NAD83

**16,035 acres
GPS 8/21/2017
@ 1500 hrs**



- FIR
- Fire Polygon
- Wilderness
- Private Land
- Paved Road
- Gravel Road
- Other Road
- Trail
- Division
- Aerial Hazard
- Camp
- Drop Point
- Fire Origin
- Helispot
- Mobile Weather Unit
- Repeater
- Water Source

PointType	Label	Latitude	Longitude
Fire Origin	Aug 1, 1230 hrs	45° 32.750'	-115° 58.026'
Incident Command Post	ICP	45° 40.179'	-116° 17.780'
Helibase	Helibase	45° 40.384'	-116° 18.464'
Helispot	Allison Mine Helispot	45° 25.114'	-116° 9.858'
Helispot	Bullion Mine Helispot	45° 27.715'	-115° 57.696'
Helispot	Gold Bug Helispot	45° 29.037'	-116° 1.902'
Helispot	H-1	45° 31.130'	-116° 0.381'
Helispot	H-16	45° 38.558'	-116° 1.900'
Helispot	McMeekin Helispot	45° 28.792'	-115° 55.928'
Helispot	Shepp Ranch	45° 26.295'	-115° 39.929'
Water Source	DIP-1	45° 31.590'	-116° 0.918'
Water Source	DIP-2	45° 30.678'	-116° 0.336'
Mobile Weather Unit	IRAWS-16	45° 35.832'	-115° 51.703'
Mobile Weather Unit	IRAWS-17	45° 28.453'	-115° 58.587'
Mobile Weather Unit	IRAWS-37	45° 38.515'	-116° 1.943'
Airstrip or Airport	Slate Creek 1S7	45° 40.303'	-116° 18.325'
Repeater	CMD07	45° 35.908'	-116° 8.024'
Repeater	CMD08	45° 24.123'	-115° 54.259'
Repeater	CMD09	45° 28.358'	-115° 49.120'
Repeater	CMD10	45° 28.264'	-116° 13.744'
Drop Point	DP-10	45° 29.068'	-115° 59.668'
Drop Point	DP-16	45° 37.928'	-116° 0.712'
Drop Point	DP-3	45° 31.225'	-116° 1.010'
Drop Point	DP-4	45° 31.093'	-116° 0.388'
Drop Point	DP-5	45° 31.702'	-116° 1.060'
Drop Point	DP-6	45° 34.113'	-116° 1.310'
Drop Point	DP-80	45° 27.569'	-115° 53.538'
Camp	Spike Camp	45° 38.534'	-116° 1.981'
Staging Area	Staging Area	45° 42.826'	-116° 3.050'



Map Date: Aug 21, 2017
Map Time: 1500 hrs