


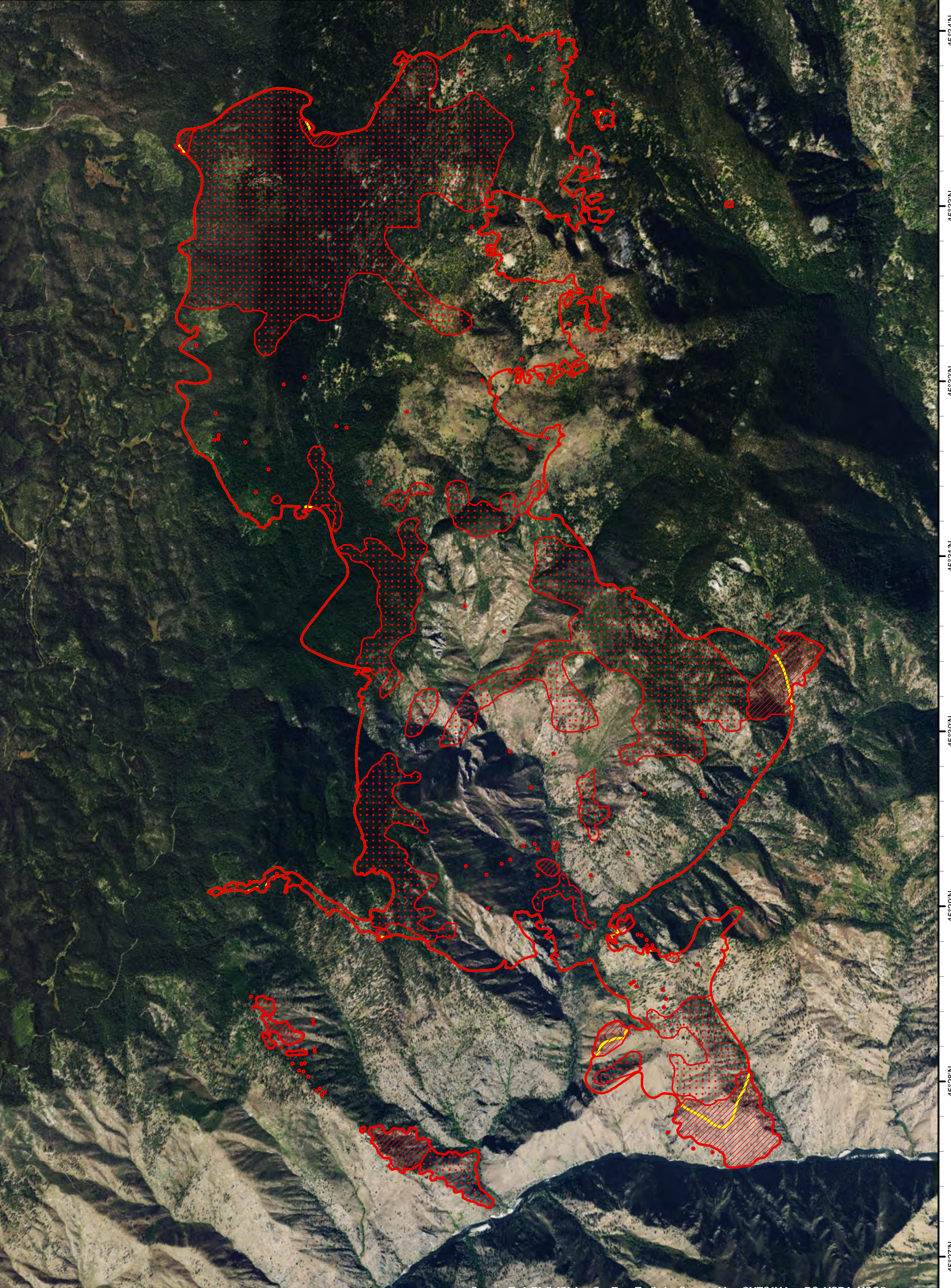
116°0'W 115°59'W 115°58'W 115°57'W 115°56'W 115°55'W 115°54'W 115°53'W

Infrared Map
Hanover (ID-NCF-000521)
Map Date: 08/16/2017
Imagery Date: 08/15/2017
Imagery Time: 2143 MDT
IR Interpreted Acres: 9,295 acres
IRIN: Tammy Hocut

- Isolated Heat Sources
- Heat Perimeter
- Intense Heat
- Scattered Heat
- 08/15/2017 Fire Perimeter

NAD 1983 UTM Zone 11N

0 0.5 1 Miles

116°0'W 115°59'W 115°58'W 115°57'W 115°56'W 115°55'W 115°54'W

Source: Esri, DigitalGlobe, GeoEye, Earthstar Geographics, CNES/Airbus DS, USDA, USGS, AeroGRID, IGN, and the GIS User Community