

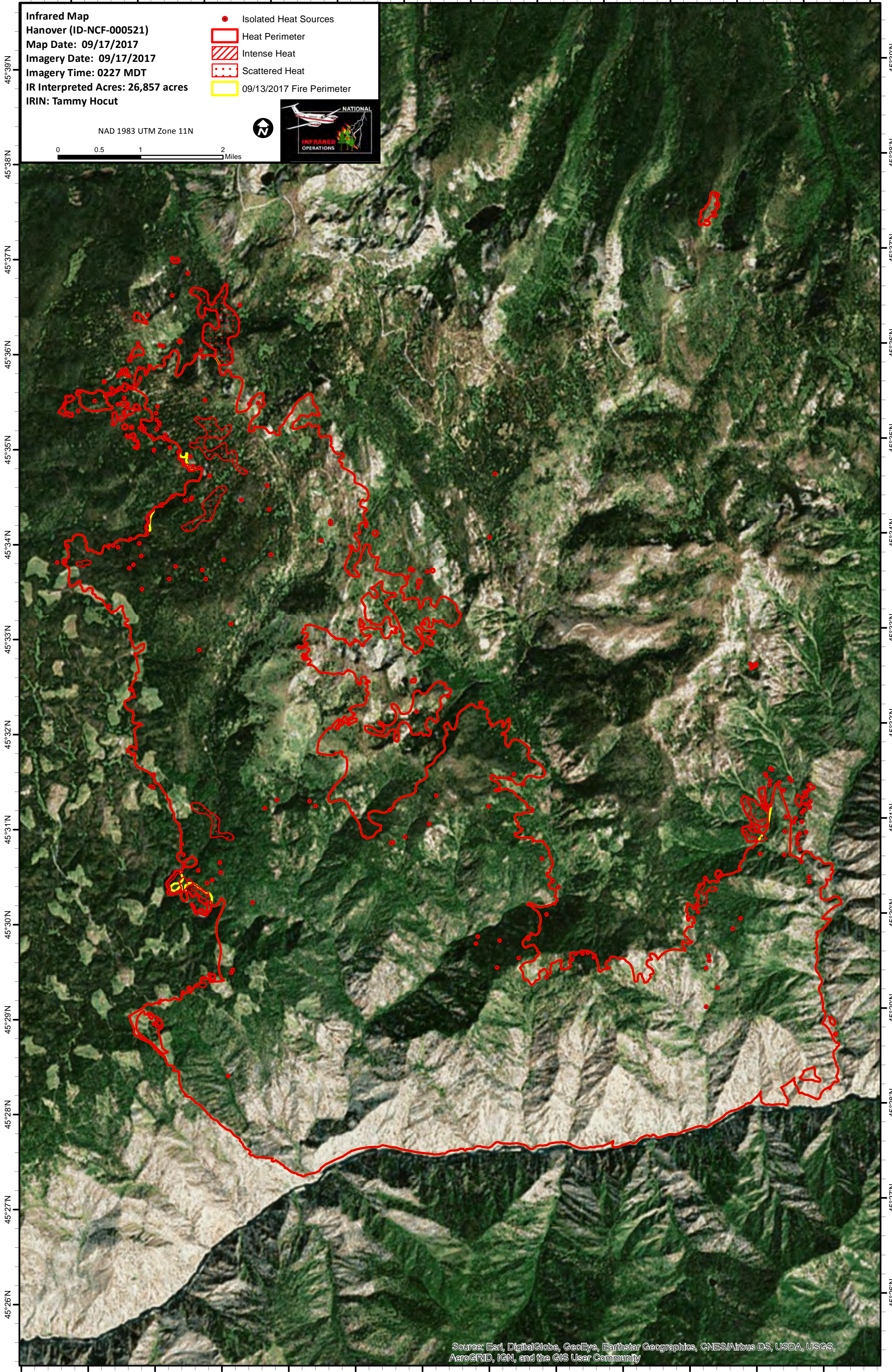

116°0'W 115°59'W 115°58'W 115°57'W 115°56'W 115°55'W 115°54'W 115°53'W 115°52'W 115°51'W 115°50'W 115°49'W 115°48'W

Infrared Map
Hanover (ID-NCF-000521)
Map Date: 09/17/2017
Imagery Date: 09/17/2017
Imagery Time: 0227 MDT
IR Interpreted Acres: 26,857 acres
IRIN: Tammy Hocut

- Isolated Heat Sources
- Heat Perimeter
- ▨ Intense Heat
- ⋯ Scattered Heat
- ▭ 09/13/2017 Fire Perimeter

NAD 1983 UTM Zone 11N

0 0.5 1 2 Miles



Source: Esri, DigitalGlobe, GeoEye, Earthstar Geographics, CNES/Airbus DS, USDA, USGS, AeroGRID, IGN, and the GIS User Community