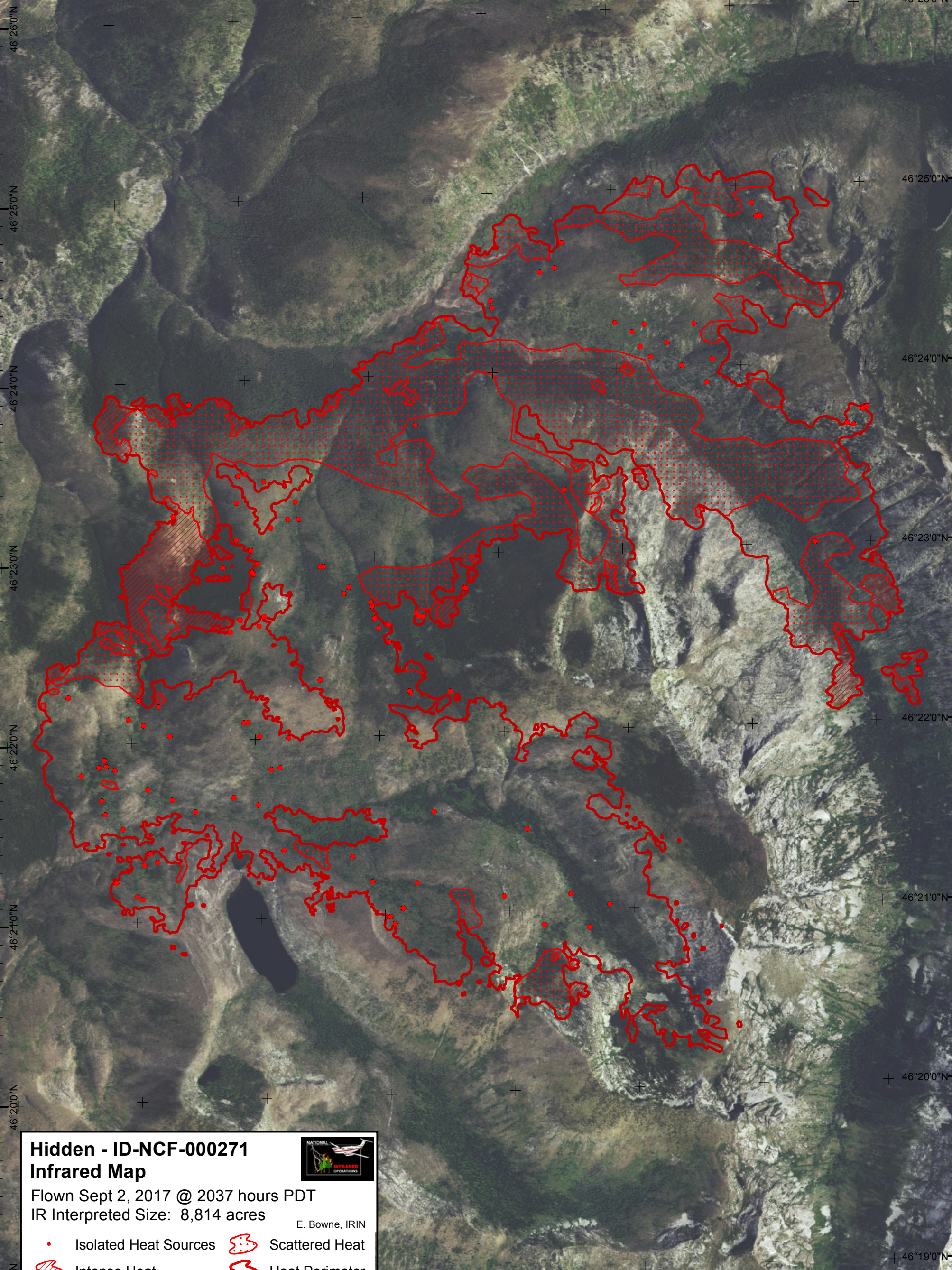


114°32'0"W 114°31'0"W 114°30'0"W 114°29'0"W 114°28'0"W 114°27'0"W 114°26'0"W



**Hidden - ID-NCF-000271**  
**Infrared Map**  
 Flown Sept 2, 2017 @ 2037 hours PDT  
 IR Interpreted Size: 8,814 acres  
 E. Bowne, IRIN

- Isolated Heat Sources
- ▨ Intense Heat
- ▨ Scattered Heat
- ▨ Heat Perimeter

Datum: NAD83



0 0.5 1 2 Miles

114°33'0"W 114°32'0"W 114°31'0"W 114°30'0"W Source: Esri, DigitalGlobe, GeoEye, Earthstar Geographics, CNES/Airbus DS, USDA, USGS, AeroGRID, IGN, IGP, swisstopo, and the GIS User Community