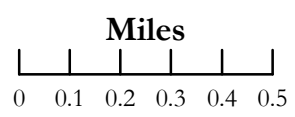
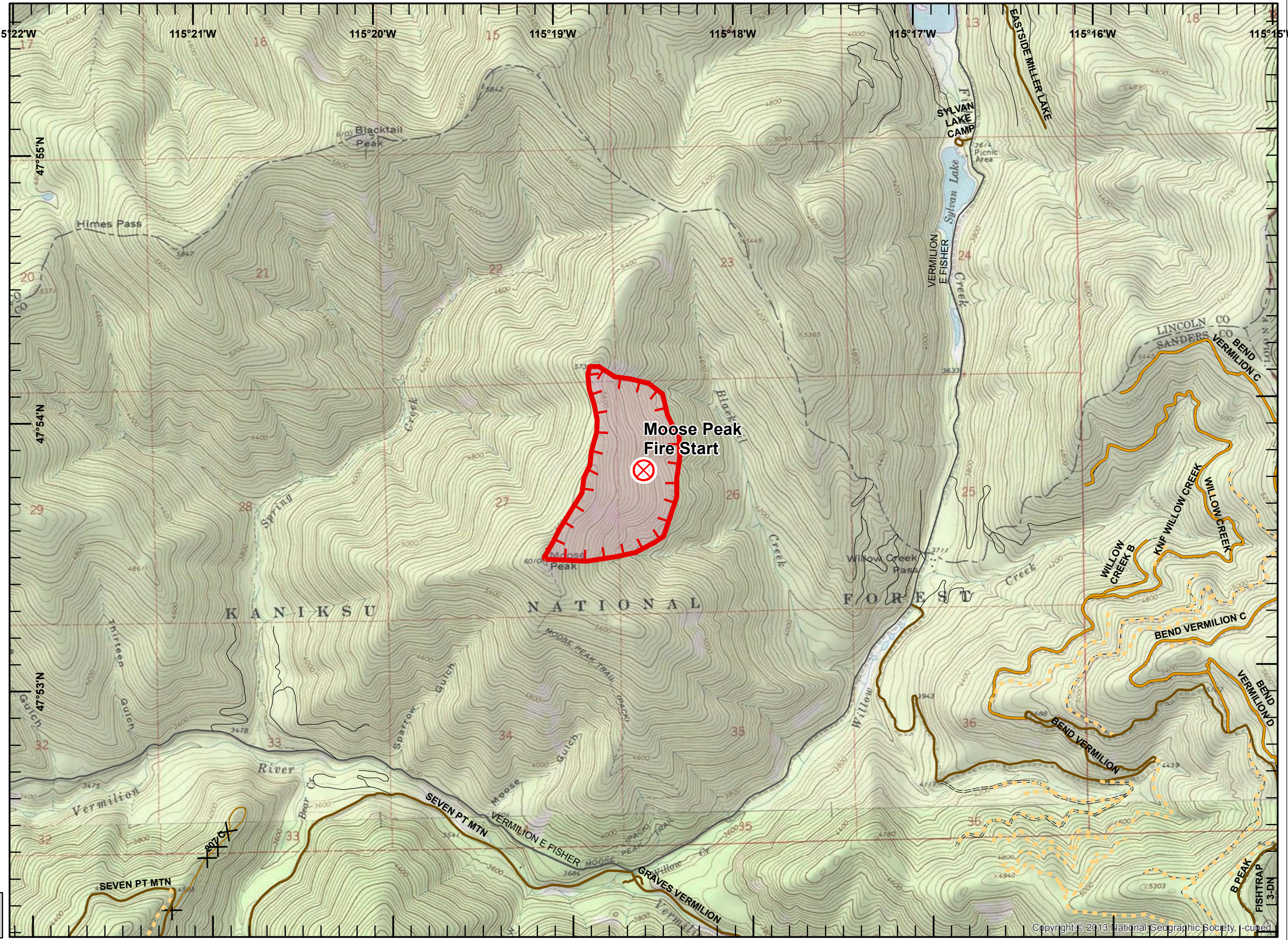


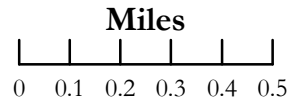
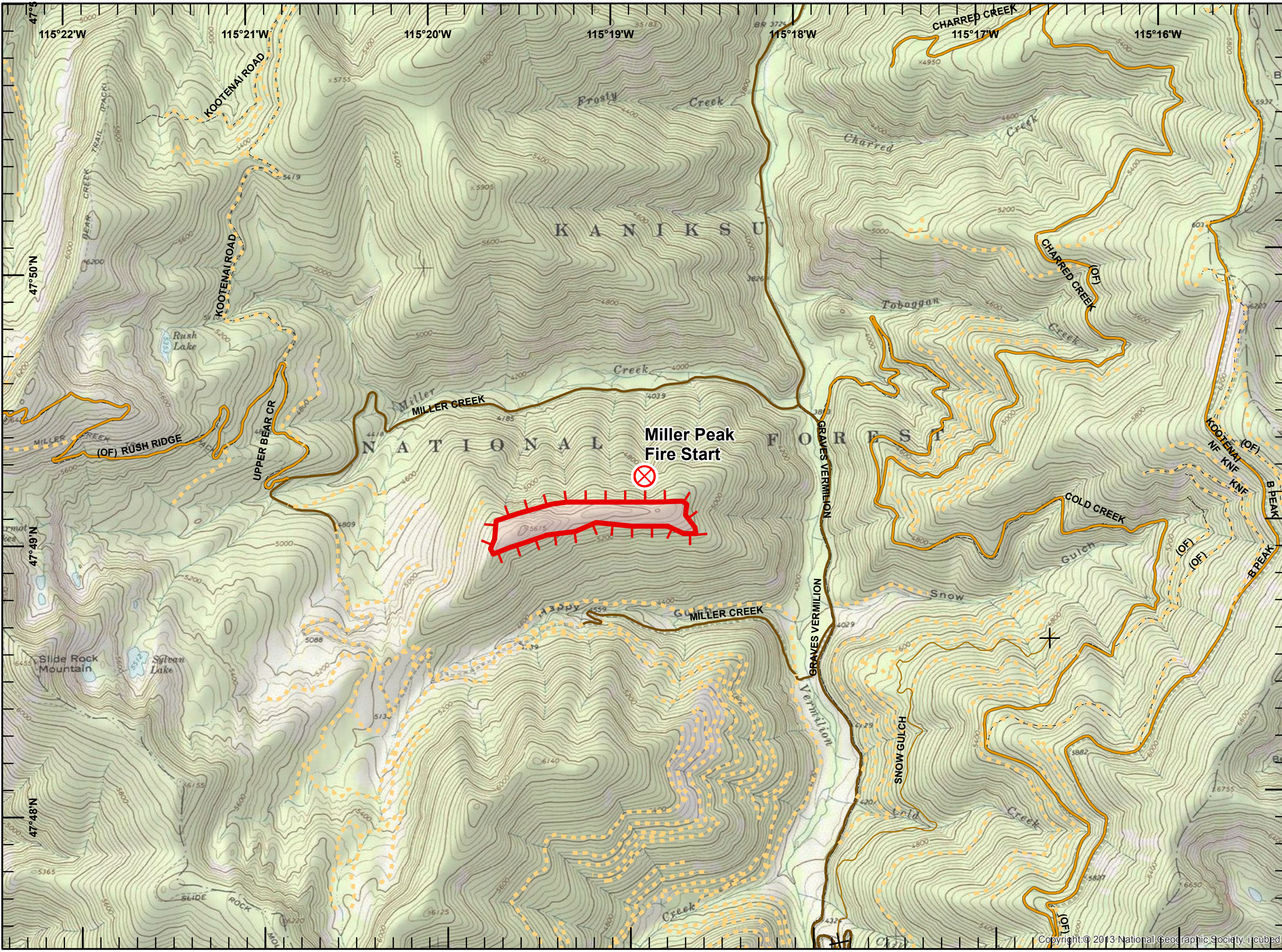
- Legend**
- Private Road
 - County Road
 - FS Roads (IGBC)**
 - 1 - IMPASSABLE TO MOTORIZED VEHICLES
 - 2 - RESTRICTED/LE... GATED ADMIN USE
 - 3 - BARRIRED/LE... NO ADMIN USE
 - 4 - OPEN DURING BEAR SEASON
 - FS roads -**
 - 1 - BASIC CUSTODIAL CARE (CLOSED)
 - 2 - HIGH CLEARANCE VEHICLES
 - Gravel/Paved Roads
 - F** Uncontrolled Fire Edge
 - Wildfire Daily Fire Perimeter
 - ⊗ Fire Origin



NAD 83
UTM Zone 11

SIA - NR WMT
9/2/2017
0045

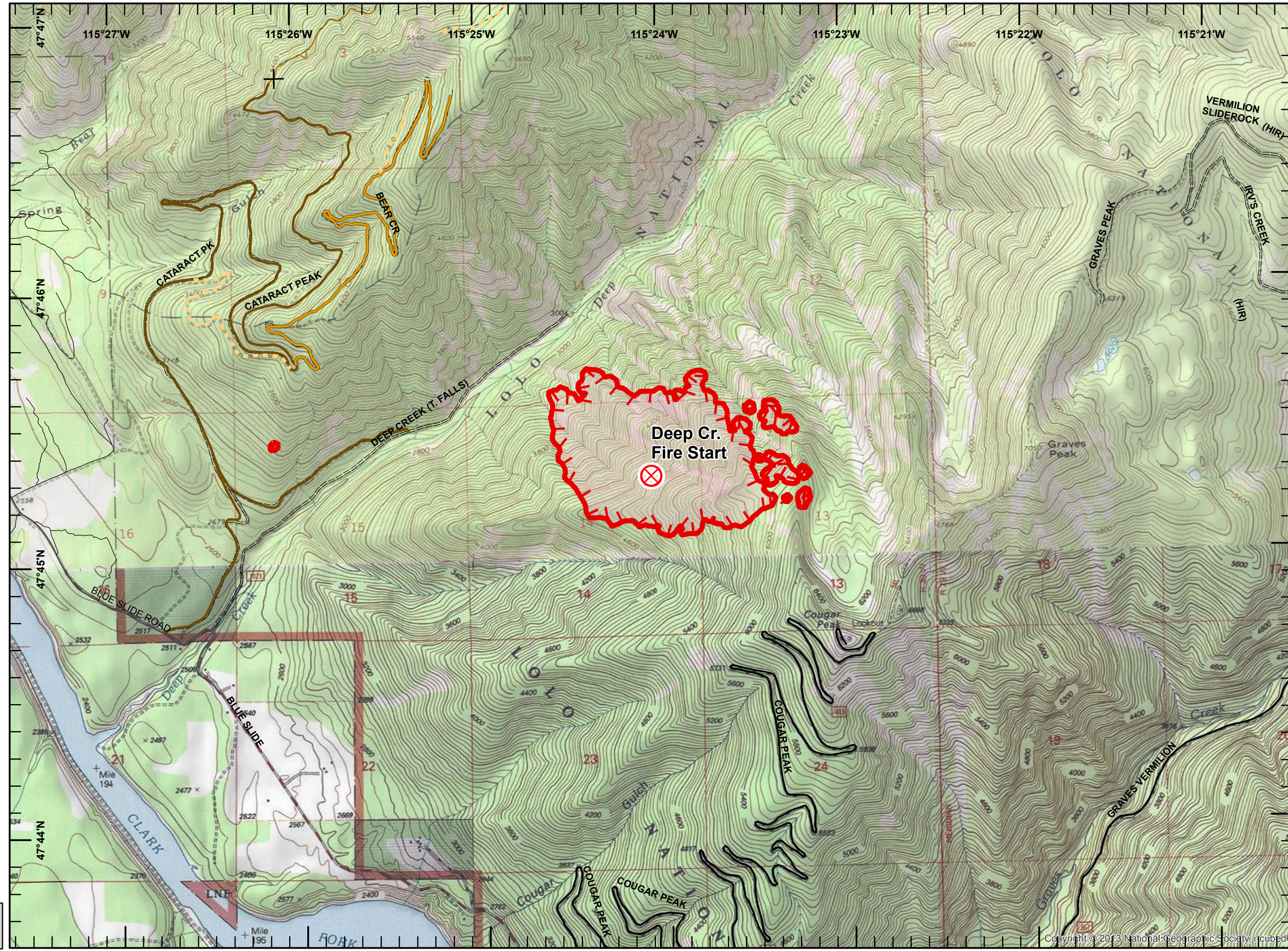
- Legend**
- FS Roads (IGBC)**
- 1 - IMPASSABLE TO MOTORIZED VEHICLES
 - 2 - RESTRICTED/LE... GATED ADMIN USE
 - 3 - BARRIRED/LE... NO ADMIN USE
 - 4 - OPEN DURING BEAR SEASON
- FS roads -**
- 1 - BASIC CUSTODIAL CARE (CLOSED)
 - 2 - HIGH CLEARANCE VEHICLES
- Fire Symbols**
- Uncontrolled Fire Edge
 - Wildfire Daily Fire Perimeter
 - Fire Origin



NAD 83
UTM Zone 11

SIA - NR WMT
9/2/2017
0045

- Legend**
- Private Road
 - County Road
 - FS Roads (IGBC)**
 - 1 - IMPASSABLE TO MOTORIZED VEHICLES
 - 2 - RESTRICTED/LE... GATED ADMIN USE
 - 3 - BARRIRED/LE... NO ADMIN USE
 - 4 - OPEN DURING BEAR SEASON
 - FS roads -**
 - 1 - BASIC CUSTODIAL CARE (CLOSED)
 - 2 - HIGH CLEARANCE VEHICLES
 - Gravel/Paved Roads
 - F** Uncontrolled Fire Edge
 - Wildfire Daily Fire Perimeter
 - X** Fire Origin

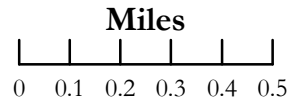
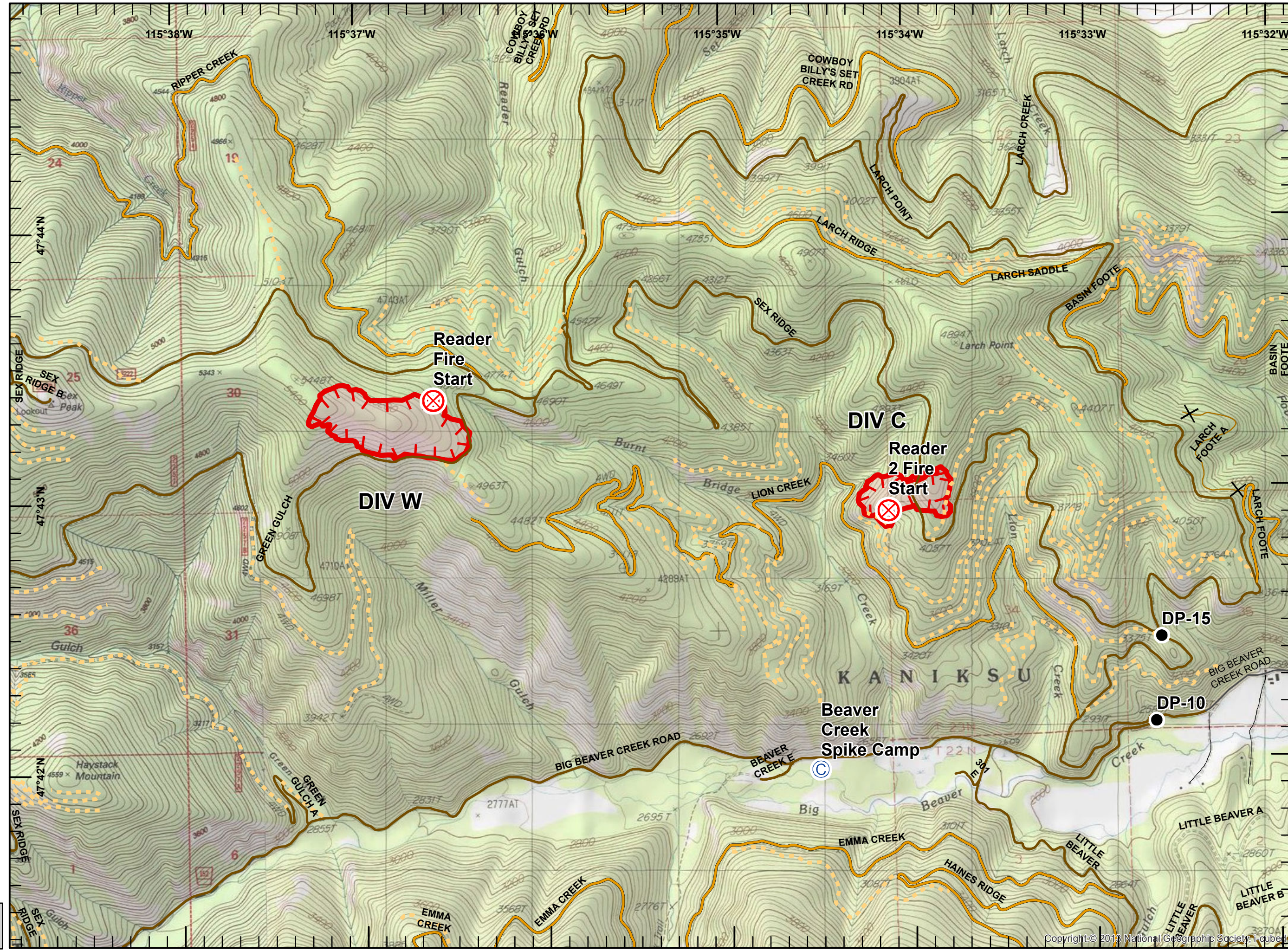


Miles
 0 0.1 0.2 0.3 0.4 0.5

NAD 83
 UTM Zone 11

SIA - NR WMT
 9/2/2017
 0045

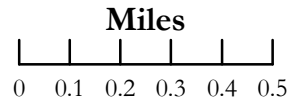
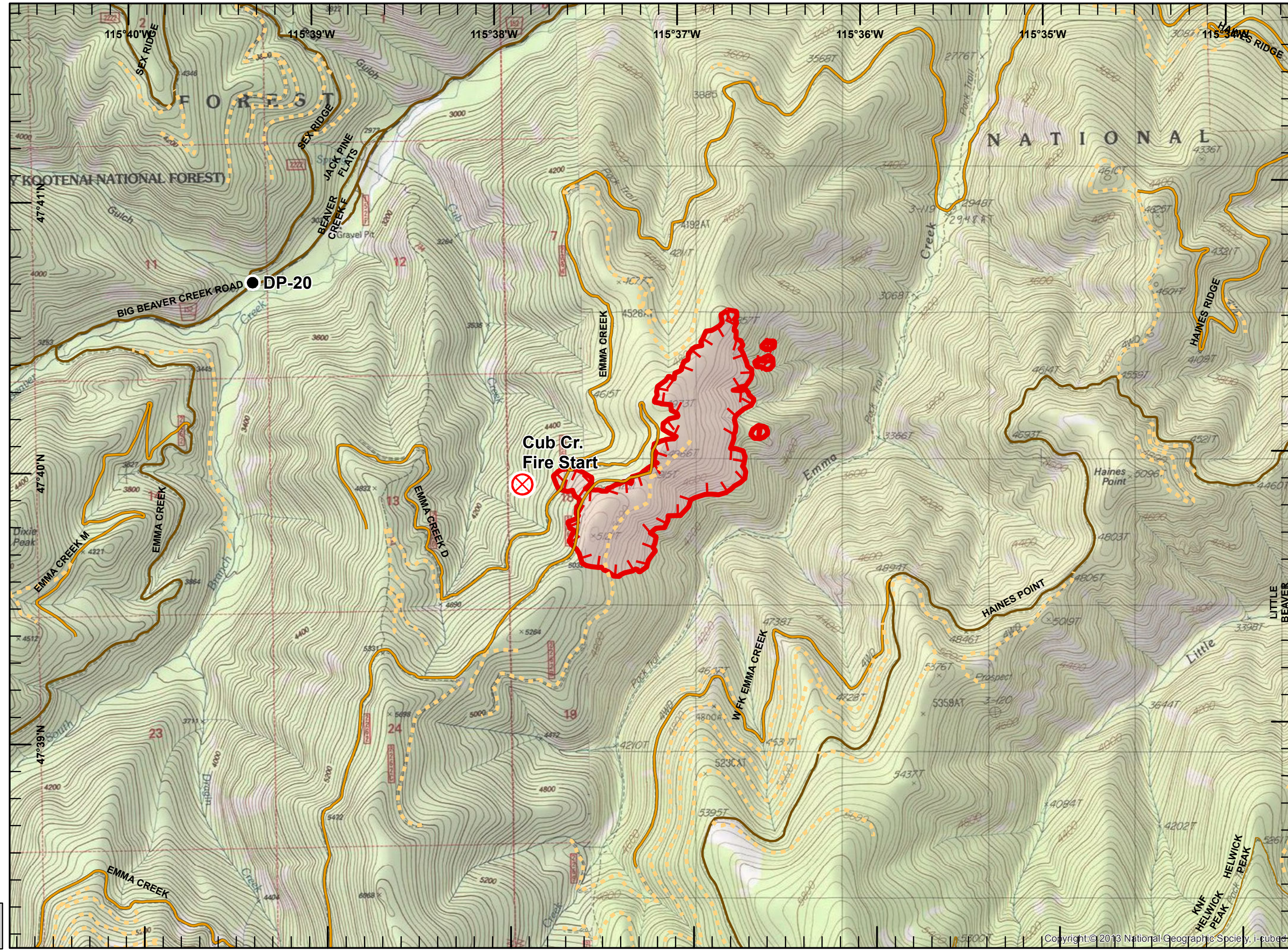
- Legend**
- Private Road
 - County Road
 - FS Roads (IGBC)**
 - 1 - IMPASSABLE TO MOTORIZED VEHICLES
 - 2 - RESTRICTED/LE... GATED ADMIN USE
 - 3 - BARRIRED/LE... NO ADMIN USE
 - 4 - OPEN DURING BEAR SEASON
 - Uncontrolled Fire Edge
 - Wildfire Daily Fire Perimeter
 - Camp
 - Drop Point
 - Fire Origin



NAD 83
UTM Zone 11

SIA - NR WMT
9/2/2017
0045

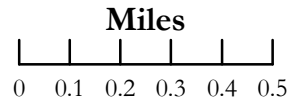
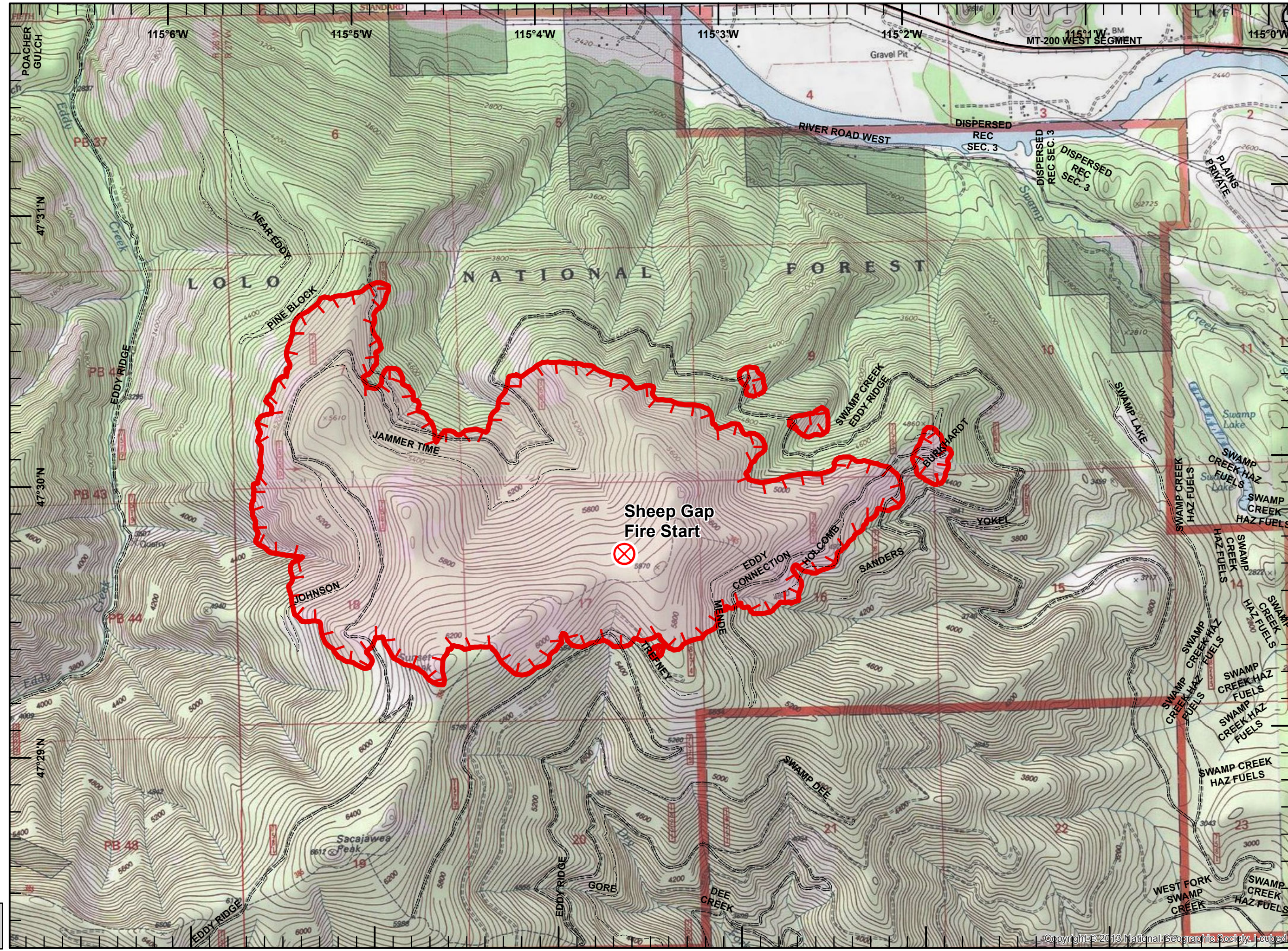
- Legend**
- FS Roads (IGBC)**
- 1 - IMPASSABLE TO MOTORIZED VEHICLES
 - 2 - RESTRICTED/LE... GATED ADMIN USE
 - 3 - BARRIRED/LE... NO ADMIN USE
 - 4 - OPEN DURING BEAR SEASON
- Uncontrolled Fire Edge
- Wildfire Daily Fire Perimeter
- Drop Point
- Fire Origin



NAD 83
UTM Zone 11

SIA - NR WMT
9/2/2017
0045

- Legend**
- FS roads -
- 1 - BASIC CUSTODIAL CARE (CLOSED)
 - 2 - HIGH CLEARANCE VEHICLES
 - Gravel/Paved Roads
 - Uncontrolled Fire Edge
 - Wildfire Daily Fire Perimeter
 - Fire Origin



NAD 83
 UTM Zone 11

SIA - NR WMT
 9/2/2017
 0045