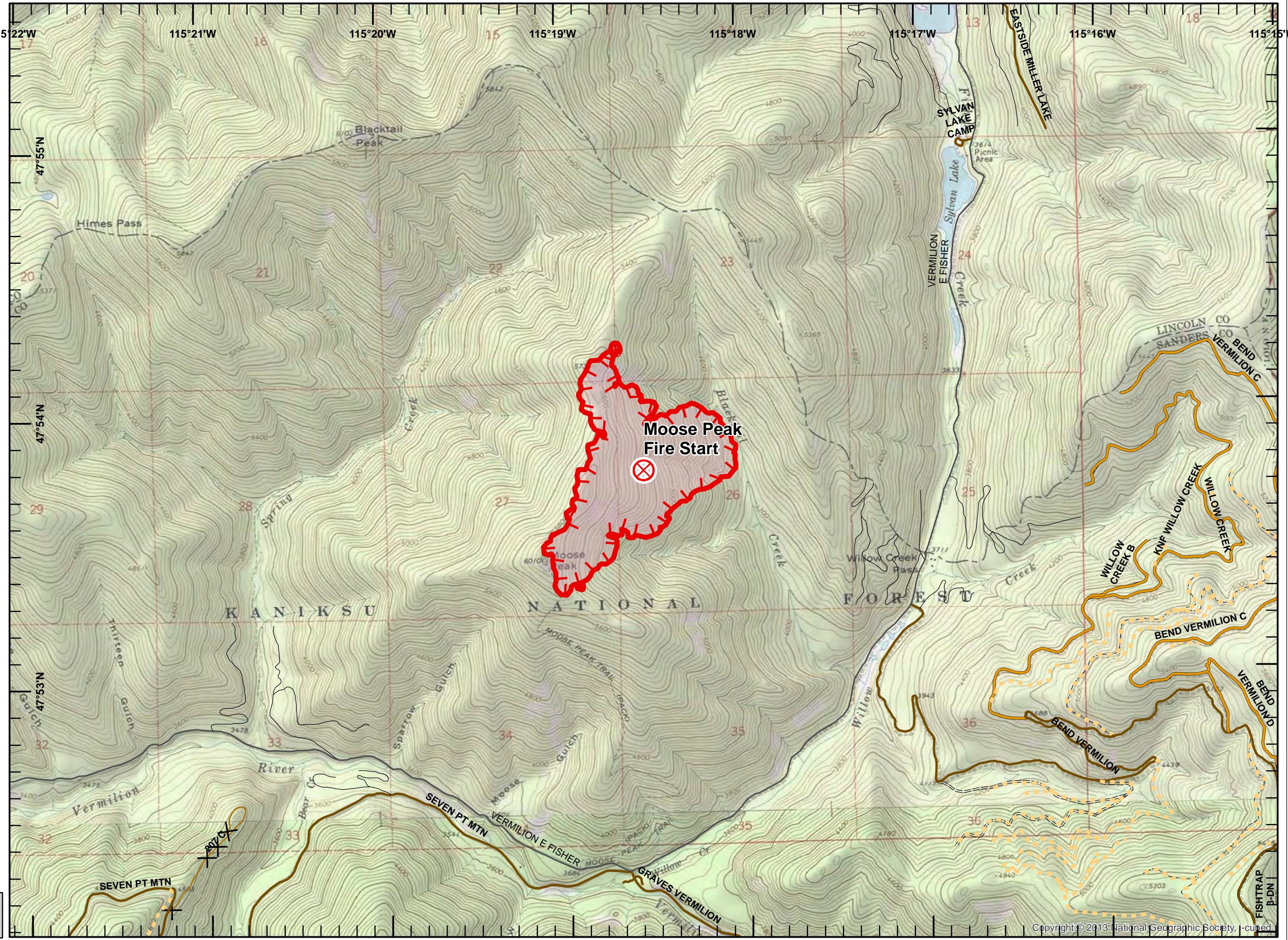


- Legend**
- Private Road
  - County Road
  - FS Roads (IGBC)**
  - 1 - IMPASSABLE TO MOTORIZED VEHICLES
  - 2 - RESTRICTED/LE... GATED ADMIN USE
  - 3 - BARRIRED/LE... NO ADMIN USE
  - 4 - OPEN DURING BEAR SEASON
  - FS roads -**
  - 1 - BASIC CUSTODIAL CARE (CLOSED)
  - 2 - HIGH CLEARANCE VEHICLES
  - Gravel/Paved Roads
  - Uncontrolled Fire Edge
  - Fire Origin
  - Wildfire Daily Fire Perimeter

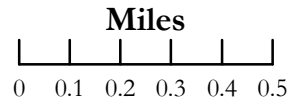
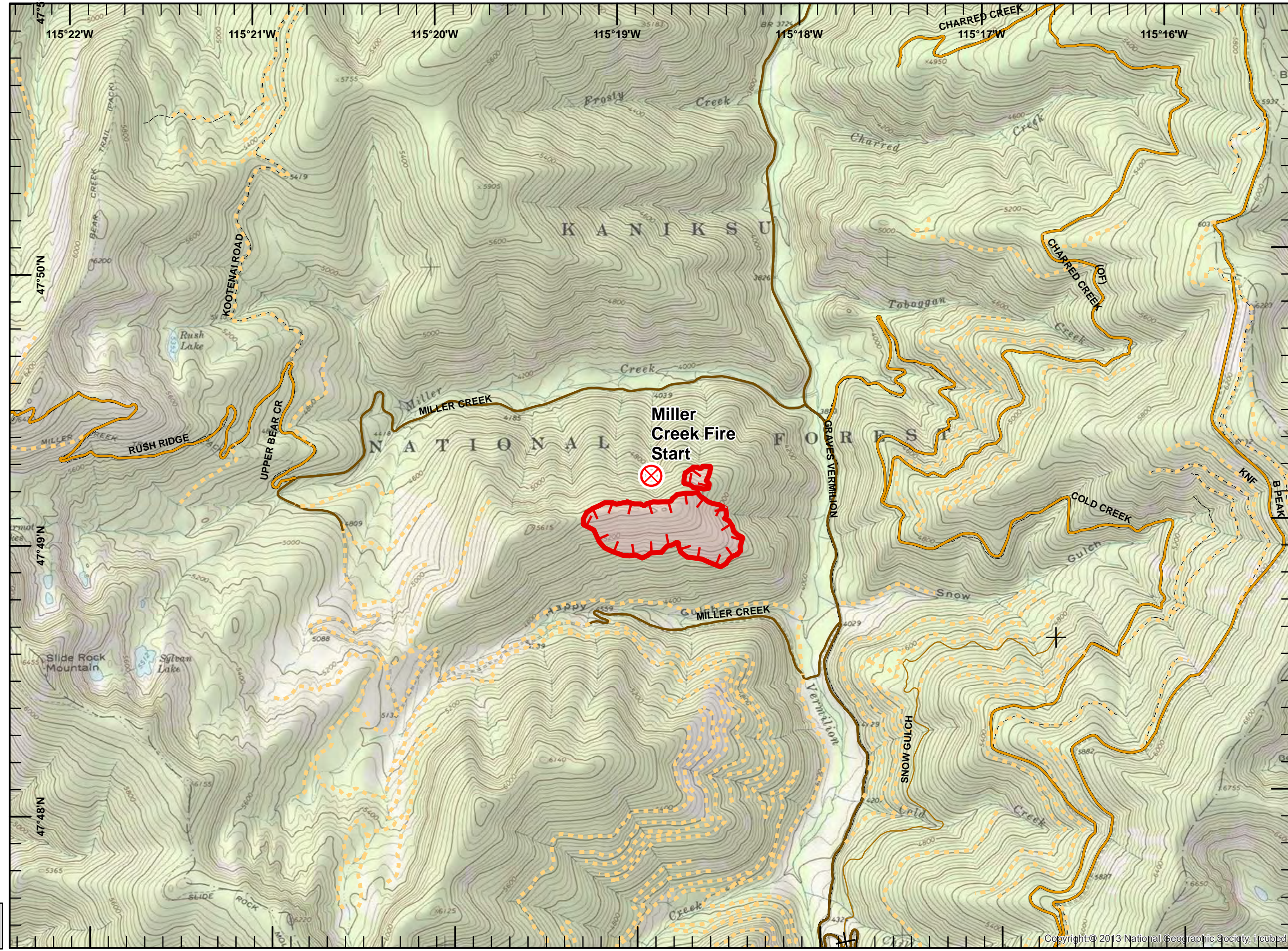


Miles  
0 0.1 0.2 0.3 0.4 0.5

NAD 83  
UTM Zone 11

SIA - NR WMT  
9/2/2017  
2043

- Legend**
- FS Roads (IGBC)**
- 1 - IMPASSABLE TO MOTORIZED VEHICLES
  - 2 - RESTRICTED/LE... GATED ADMIN USE
  - 3 - BARRIRED/LE... NO ADMIN USE
  - 4 - OPEN DURING BEAR SEASON
- FS roads -**
- 1 - BASIC CUSTODIAL CARE (CLOSED)
  - 2 - HIGH CLEARANCE VEHICLES
- Fire**
- Uncontrolled Fire Edge
  - Fire Origin
  - Wildfire Daily Fire Perimeter



NAD 83  
UTM Zone 11



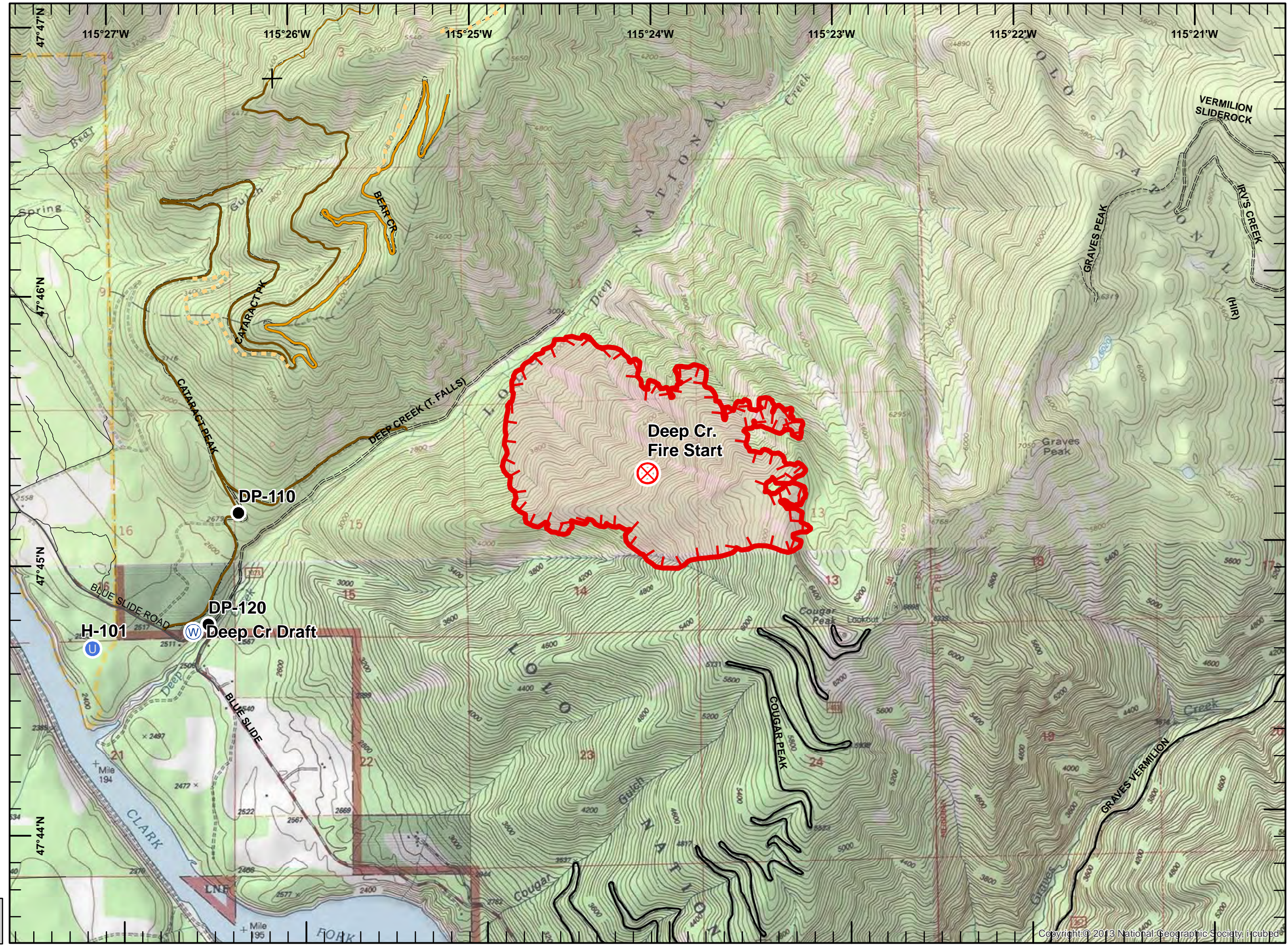
SIA - NR WMT  
9/2/2017  
2043

- Legend**
- Private Road
  - County Road
  - FS Roads (IGBC)**
  - 1 - IMPASSABLE TO MOTORIZED VEHICLES
  - 2 - RESTRICTED/LE... GATED ADMIN USE
  - 3 - BARRIERED/LE... NO ADMIN USE
  - 4 - OPEN DURING BEAR SEASON
  - FS roads -**
  - 1 - BASIC CUSTODIAL CARE (CLOSED)
  - 2 - HIGH CLEARANCE VEHICLES
  - Gravel/Paved Roads
  - Uncontrolled Fire Edge**
  - Drop Point
  - ⊗ Fire Origin
  - Ⓢ Unimproved Landing Area
  - Ⓜ Water Source
  - Wildfire Daily Fire Perimeter
  - Evacuation Area

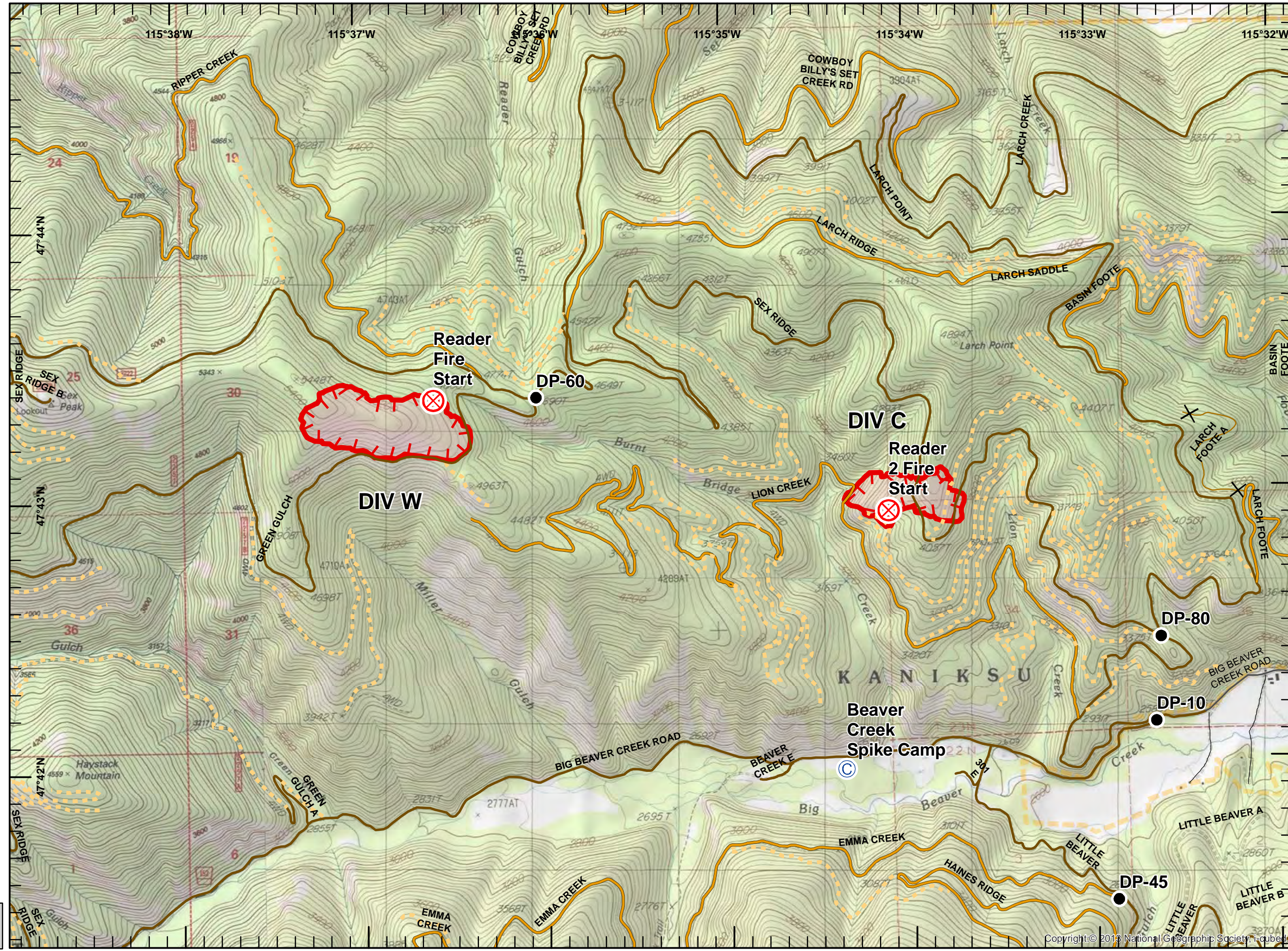
Miles  
 0 0.1 0.2 0.3 0.4 0.5

NAD 83  
 UTM Zone 11

SIA - NR WMT  
 9/2/2017  
 2043

- Legend**
- Private Road
  - County Road
  - FS Roads (IGBC)**
    - 1 - IMPASSABLE TO MOTORIZED VEHICLES
    - 2 - RESTRICTED/LE... GATED ADMIN USE
    - 3 - BARRIERED/LE... NO ADMIN USE
    - 4 - OPEN DURING BEAR SEASON
  - Uncontrolled Fire Edge
  - Camp
  - Drop Point
  - Fire Origin
  - Wildfire Daily Fire Perimeter
  - Evacuation Area

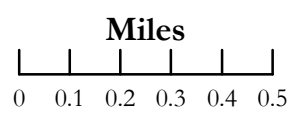
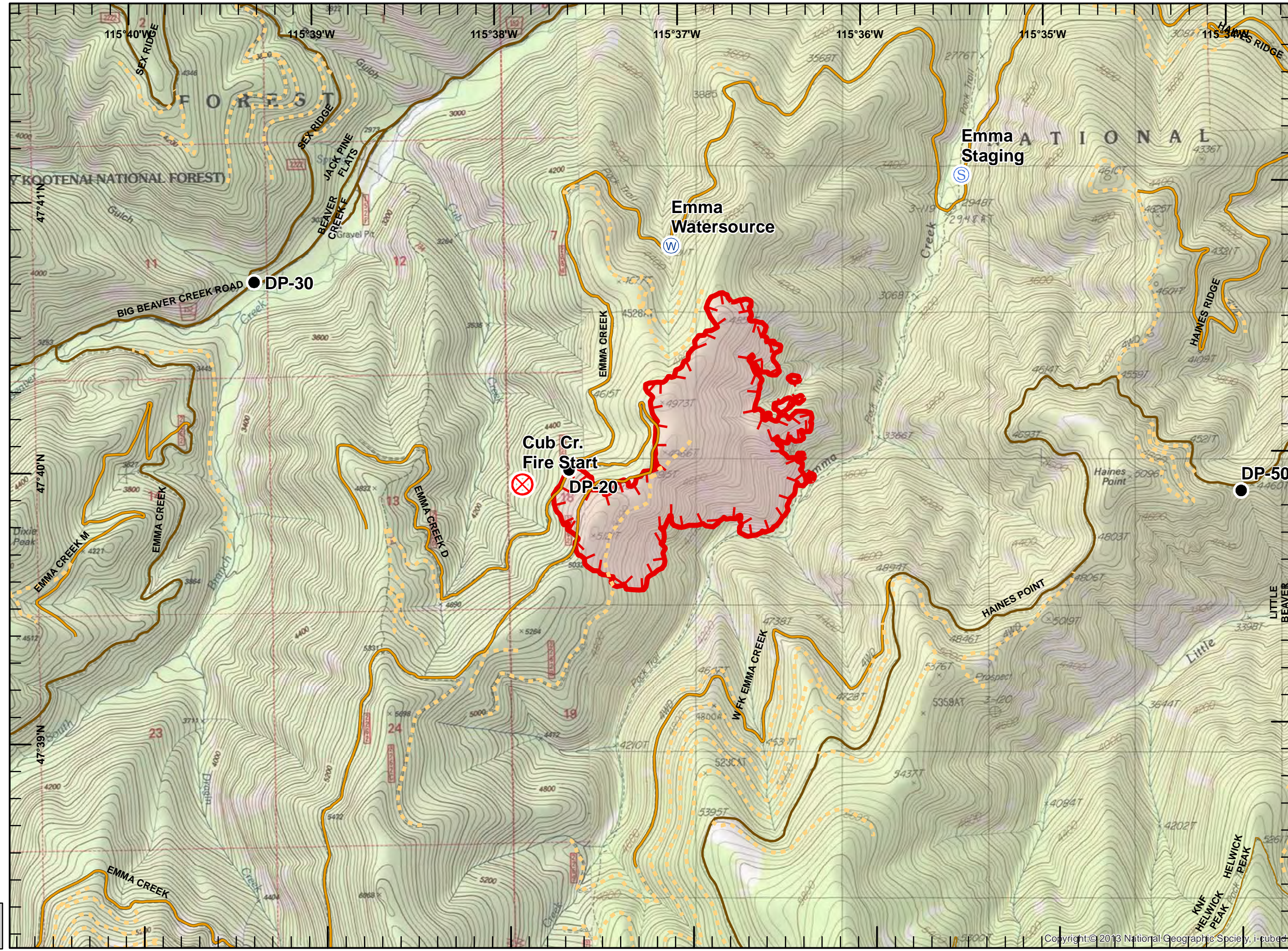


Miles  
0 0.1 0.2 0.3 0.4 0.5

NAD 83  
UTM Zone 11

SIA - NR WMT  
9/2/2017  
2043

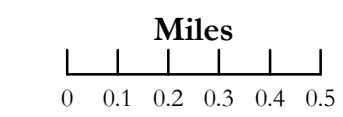
- Legend**
- FS Roads (IGBC)**
- 1 - IMPASSABLE TO MOTORIZED VEHICLES
  - 2 - RESTRICTED/LE... GATED ADMIN USE
  - 3 - BARRIRED/LE... NO ADMIN USE
  - 4 - OPEN DURING BEAR SEASON
- Uncontrolled Fire Edge
- Drop Point
  - ⊗ Fire Origin
  - Ⓢ Staging Area
  - Ⓜ Water Source
  - Wildfire Daily Fire Perimeter



NAD 83  
UTM Zone 11

SIA - NR WMT  
9/2/2017  
2043

- Legend**
- FS roads -**
- 1 - BASIC CUSTODIAL CARE (CLOSED)
  - 2 - HIGH CLEARANCE VEHICLES
  - Gravel/Paved Roads
  - Uncontrolled Fire Edge
  - Completed Dozer Line
  - R - R Road as Completed Line
  - Drop Point
  - Fire Origin
  - Hot Spot
  - Landmark
  - Staging Area
  - Water Source
  - Wildfire Daily Fire Perimeter
  - Temporary Flight Restriction



NAD 83  
 UTM Zone 11

SIA - NR WMT  
 9/2/2017  
 2044

