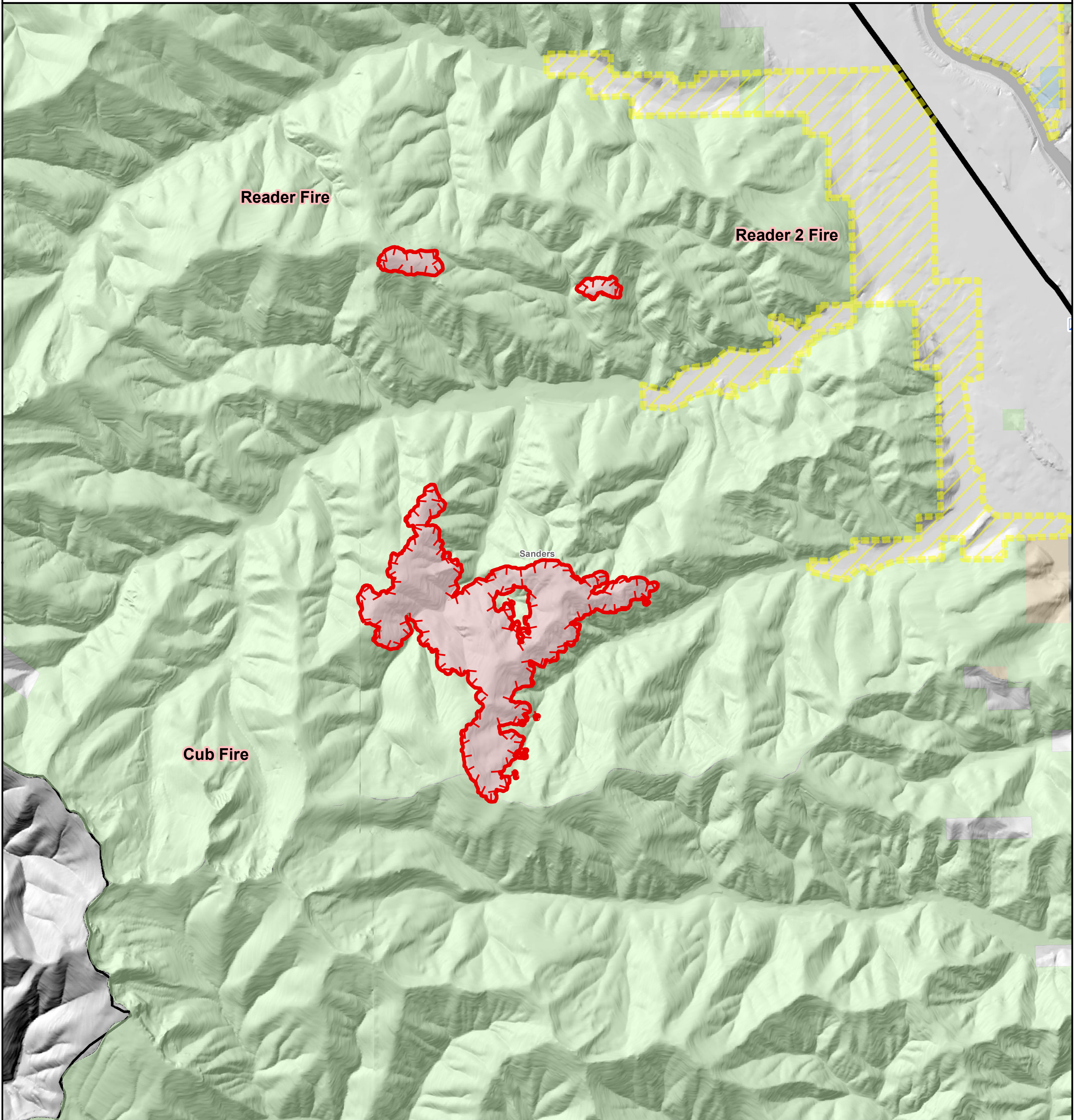




# Information

Hwy 200 Complex MT-LNF-001811

## Reader, Reader 2, Cub Cr. Fire



- FS
- State
- Industrial Private
- Private
- Highway 200
- Incident Command Post
- Uncontrolled Fire Edge
- Wildfire Daily Fire Perimeter
- Pre-Evacuation Area

