

# Hwy 200 Complex IAP Map

Moose Peak














MT-LNF-001811

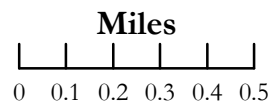
9/4/2017

Day Shift

Page 1 of 6

## Legend

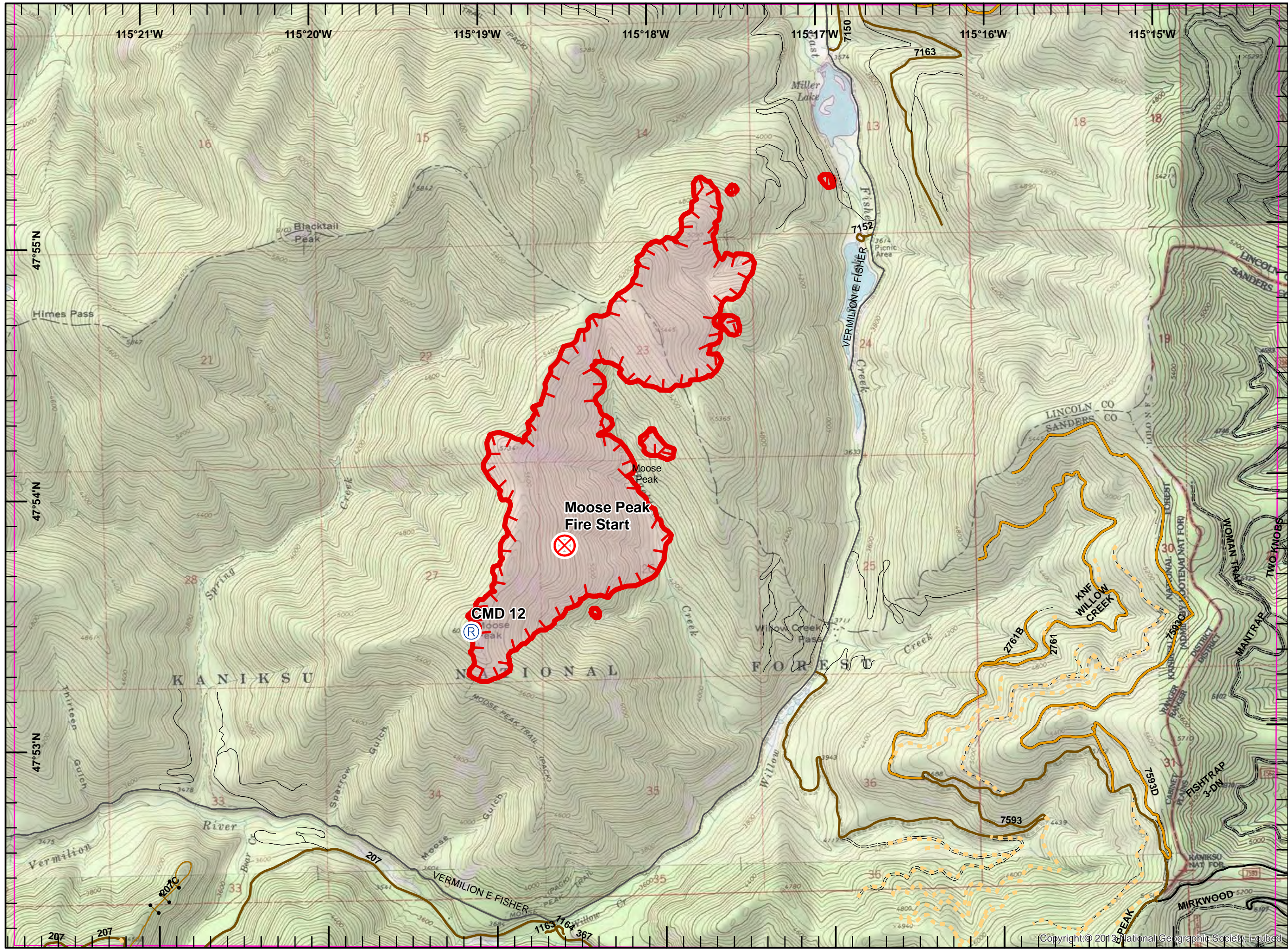
-  Fire Origin
-  Repeater
-  Private Road
-  County Road
- FS Roads (IGBC)**
-  1 - IMPASSABLE TO MOTORIZED VEHICLES
-  2 - RESTRICTED/LE... GATED ADMIN USE
-  3 - BARRIRED/LE... NO ADMIN USE
-  4 - OPEN DURING BEAR SEASON
- FS roads -**
-  1 - BASIC CUSTODIAL CARE (CLOSED)
-  2 - HIGH CLEARANCE VEHICLES
-  Gravel/Paved Roads
-  Uncontrolled Fire Edge
-  Wildfire Daily Fire Perimeter



NAD 83  
UTM Zone 11

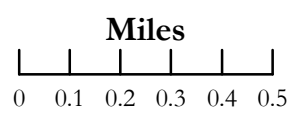
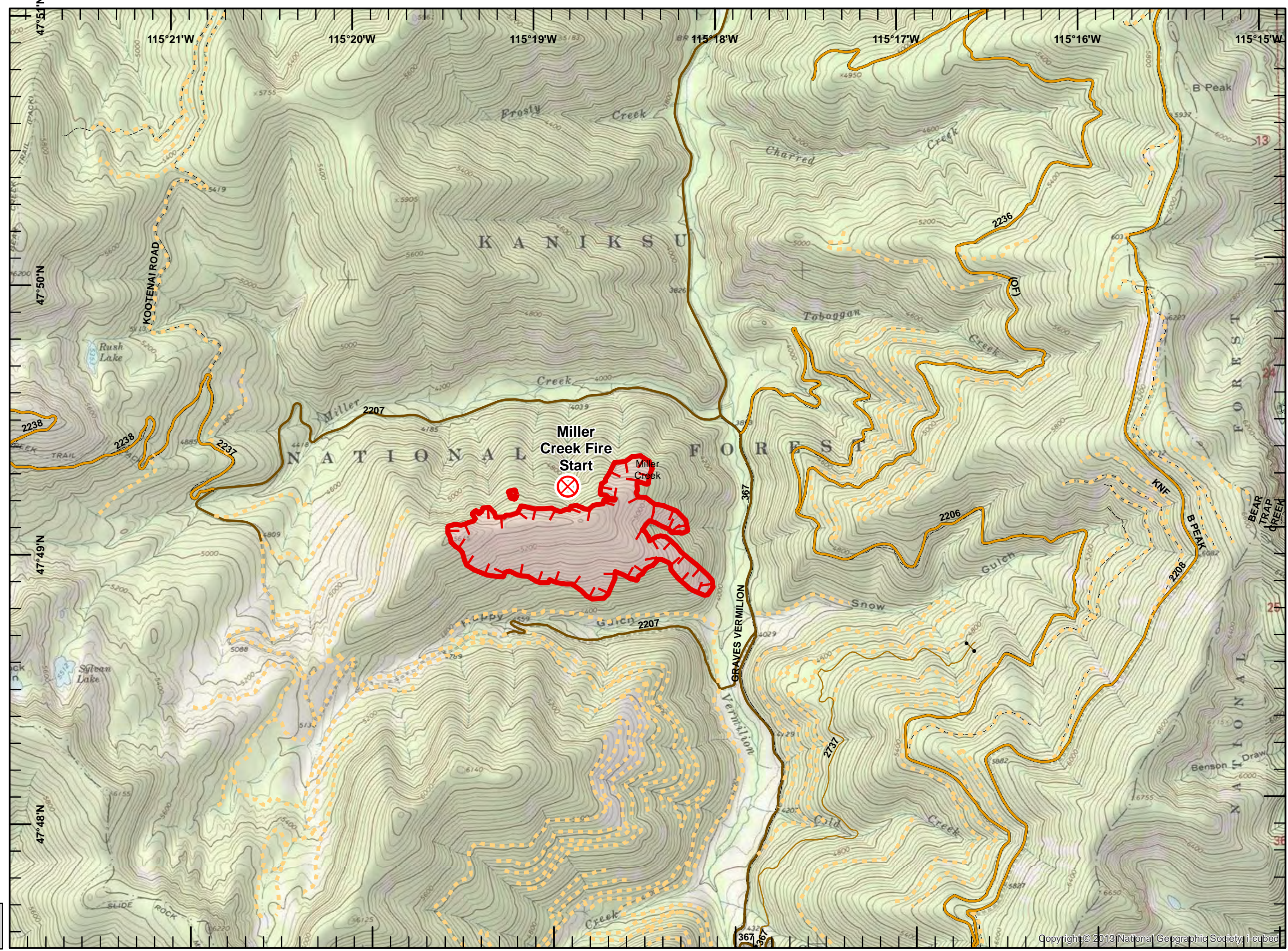


SIA - NR WMT  
9/3/2017  
1931





-  Fire Origin
- FS Roads (IGBC)**
-  1 - IMPASSABLE TO MOTORIZED VEHICLES
-  2 - RESTRICTED/LEGALLY GATED ADMIN USE
-  3 - BARRIERED/LEGALLY NO ADMIN USE
-  4 - OPEN DURING BEAR SEASON
- FS roads -**
-  1 - BASIC CUSTODIAL CARE (CLOSED)
-  2 - HIGH CLEARANCE VEHICLES
-  Uncontrolled Fire Edge
-  Wildfire Daily



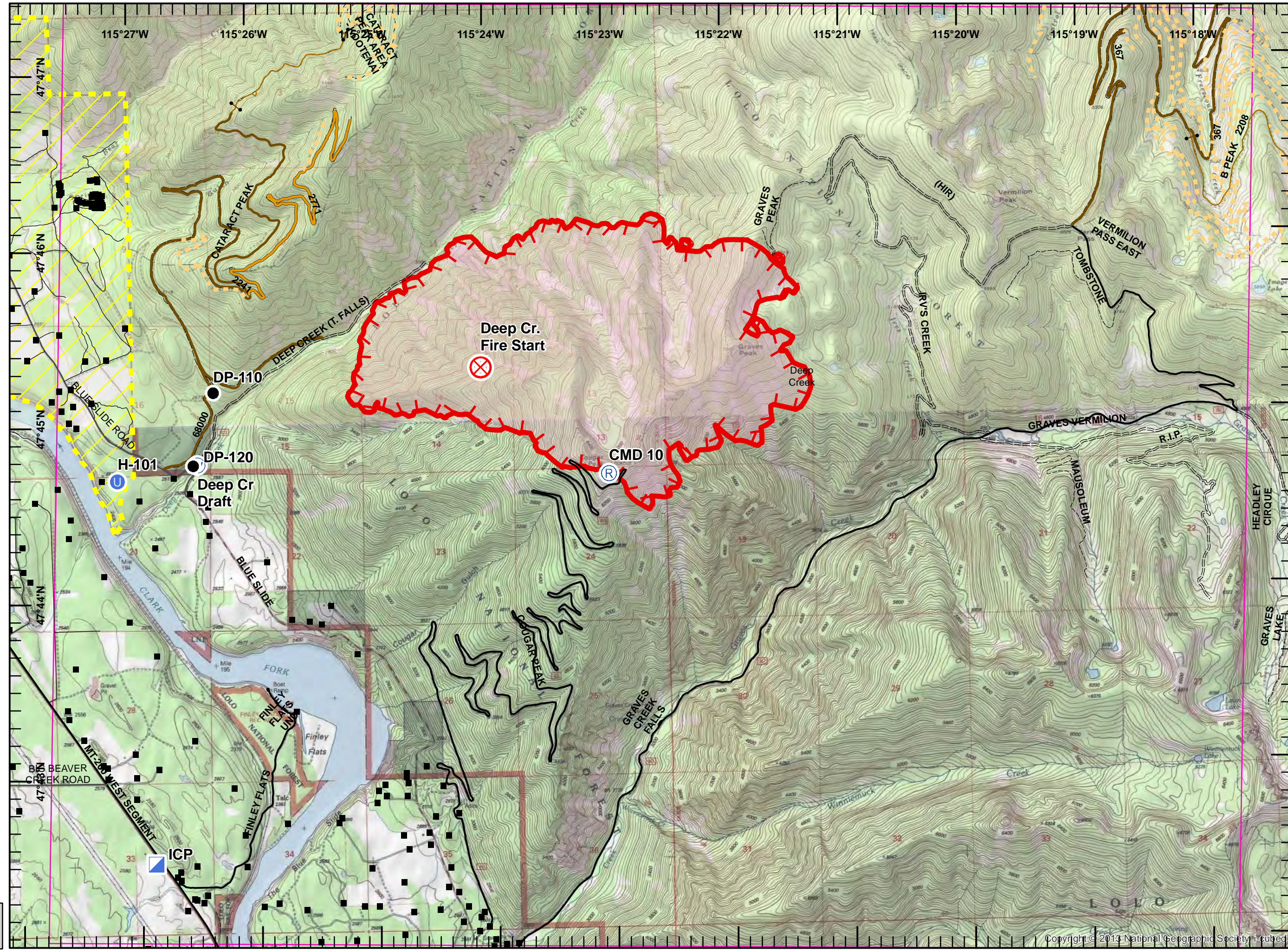
NAD 83  
UTM Zone 11




SIA - NR WMT  
9/3/2017  
1931



- Structures
- Drop Point
- ⊗ Fire Origin
- ⊙ Unimproved Landing Area
- ▣ Incident Command Post
- Ⓡ Repeater
- Ⓜ Water Source
- Private Road
- County Road
- FS Roads (IGBC)**
- 1 - IMPASSABLE TO MOTORIZED VEHICLES
- 2 - RESTRICTED/LE... GATED ADMIN USE
- 3 - BARRIERED/LE... NO ADMIN USE
- 4 - OPEN DURING BEAR SEASON
- FS roads -**
- 1 - BASIC CUSTODIAL CARE (CLOSED)
- 2 - HIGH CLEARANCE VEHICLES
- Gravel/Paved Roads
- Unconfined Fire Edge
- Pre-Evacuation Area
- Wildfire Daily



NAD 83  
 UTM Zone 11  
 SIA - NR WMT  
 9/3/2017  
 1932



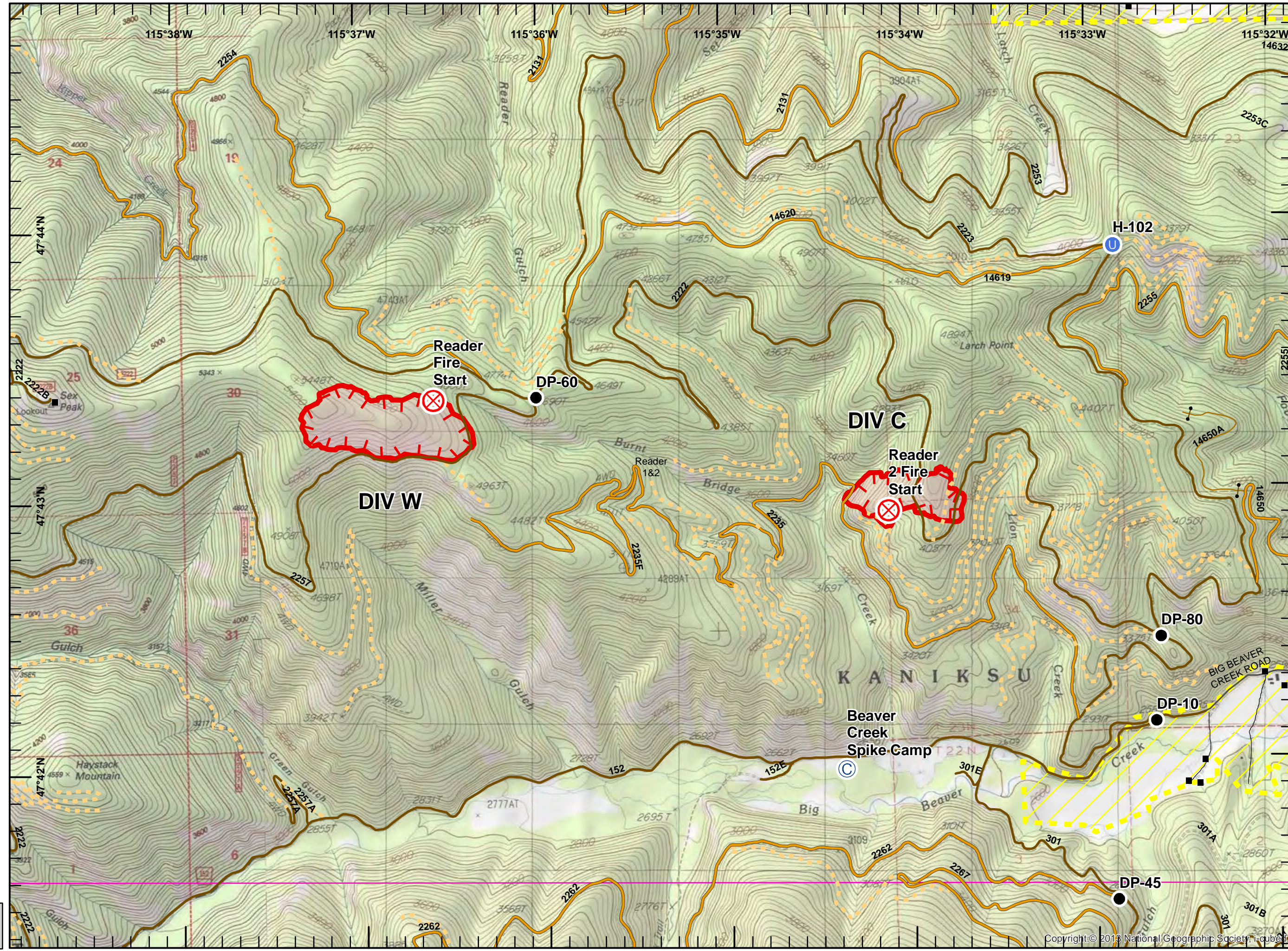


- Legend**
- Structures
  - ⊙ Camp
  - Drop Point
  - ⊗ Fire Origin
  - ⊙ Unimproved Landing Area
  - Private Road
  - County Road
- FS Roads (IGBC)**
- 1 - IMPASSABLE TO MOTORIZED VEHICLES
  - 2 - RESTRICTED/LEGATED ADMIN USE
  - 3 - BARRIERED/LEGATED NO ADMIN USE
  - 4 - OPEN DURING BEAR SEASON
- ⊗ Uncontrolled Fire Edge
  - ▨ Pre-Evacuation Area
  - ▨ Wildfire Daily Fire Perimeter

Miles  
0 0.1 0.2 0.3 0.4 0.5

NAD 83  
UTM Zone 11

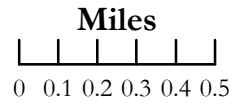
SIA - NR WMT  
9/3/2017  
1932



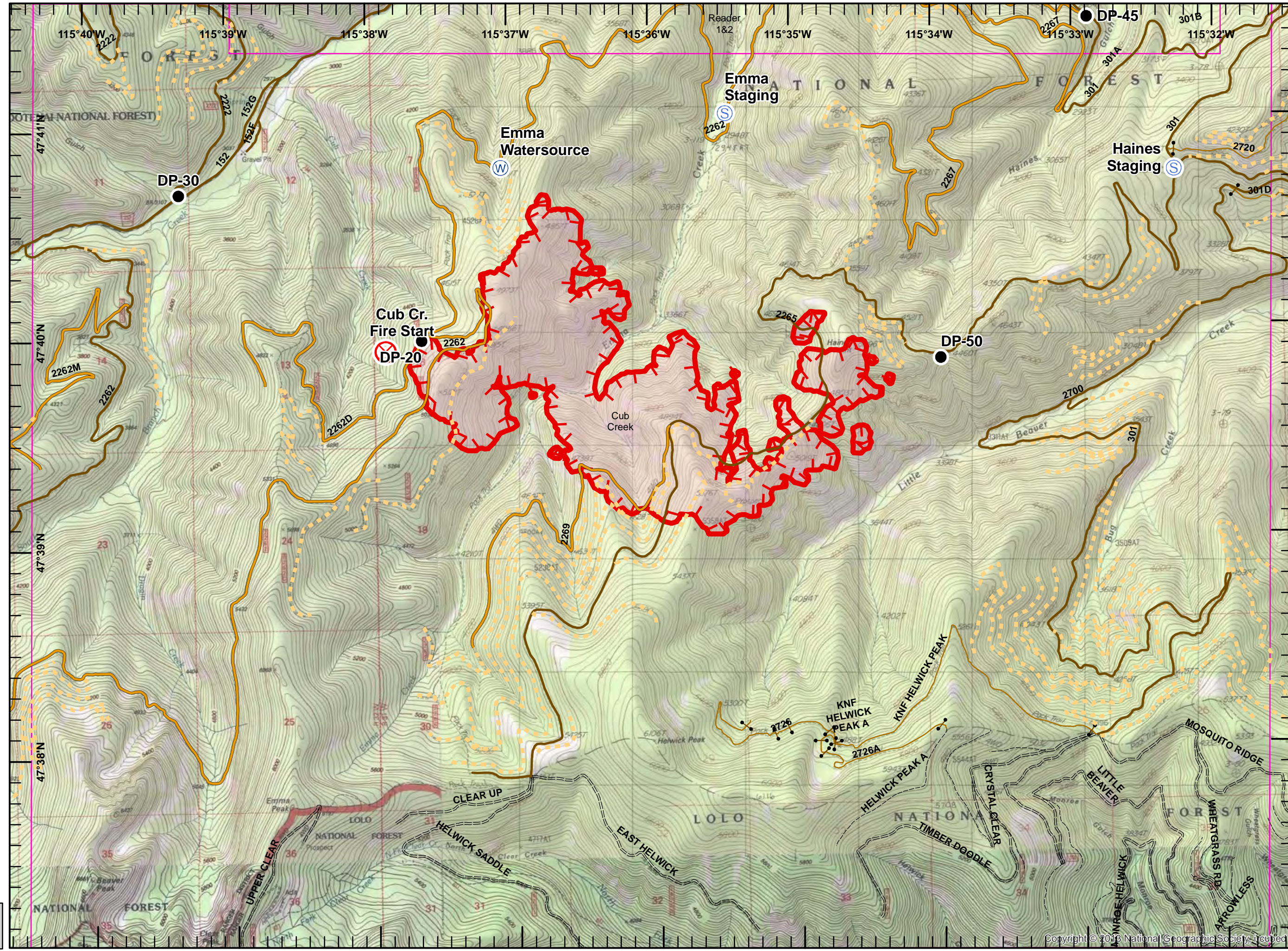
**Legend**

- Drop Point
  - ⊗ Fire Origin
  - Ⓢ Staging Area
  - Ⓜ Water Source
- FS Roads (IGBC)**
- 1 - IMPASSABLE TO MOTORIZED VEHICLES
  - 2 - RESTRICTED/LE... GATED ADMIN USE
  - 3 - BARRIRED/LE... NO ADMIN USE
  - 4 - OPEN DURING BEAR SEASON
- FS roads -**
- 1 - BASIC CUSTODIAL CARE (CLOSED)
  - 2 - HIGH CLEARANCE VEHICLES
- Uncontrolled Fire Edge
  - Wildfire Daily Fire Perimeter



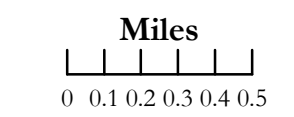
NAD 83  
UTM Zone 11

SIA - NR WMT  
9/3/2017  
1932





- Legend**
- Structures
  - Drop Point
  - ⊗ Fire Origin
  - Landmark
  - Ⓢ Staging Area
  - Ⓜ Water Source
- FS roads -**
- 1 - BASIC CUSTODIAL CARE (CLOSED)
  - 2 - HIGH CLEARANCE VEHICLES
  - Gravel/Paved Roads
  - Uncontrolled Fire Edge
  - Completed Dozer Line
  - R - R Road as Completed Line
  - Wildfire Daily Fire Perimeter



NAD 83  
 UTM Zone 11

SIA - NR WMT  
 9/3/2017  
 1932

