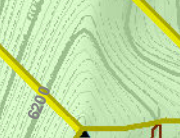
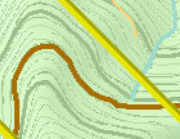
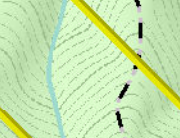
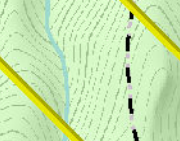
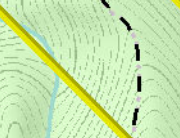
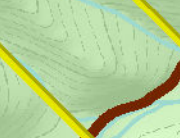
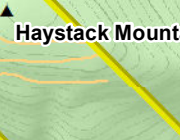
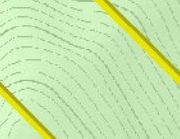
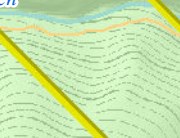
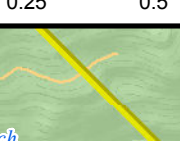
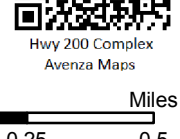
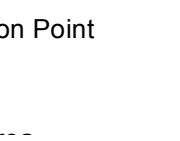
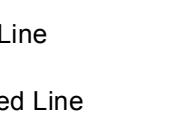
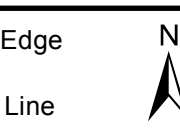




# Ops Map

Hwy 200 Complex  
MT-LNF-001811

## Reader, Reader 2, Cub Cr. Fire



- FS
- Private
- Open road
- Gated road
- Barriered road
- Impassable road
- NFSR road
- County road
- Trails
- Structures
- Camp
- Drop Point
- Fire Origin
- Unimproved Landing Area
- Pump
- Staging Area
- Water Source
- Uncontrolled Fire Edge
- Completed Dozer Line
- Completed Hand Line
- Road as Completed Line
- Management Action Point
- Closure Area
- Pre-Evacuation Area

