
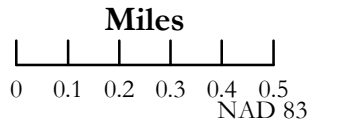
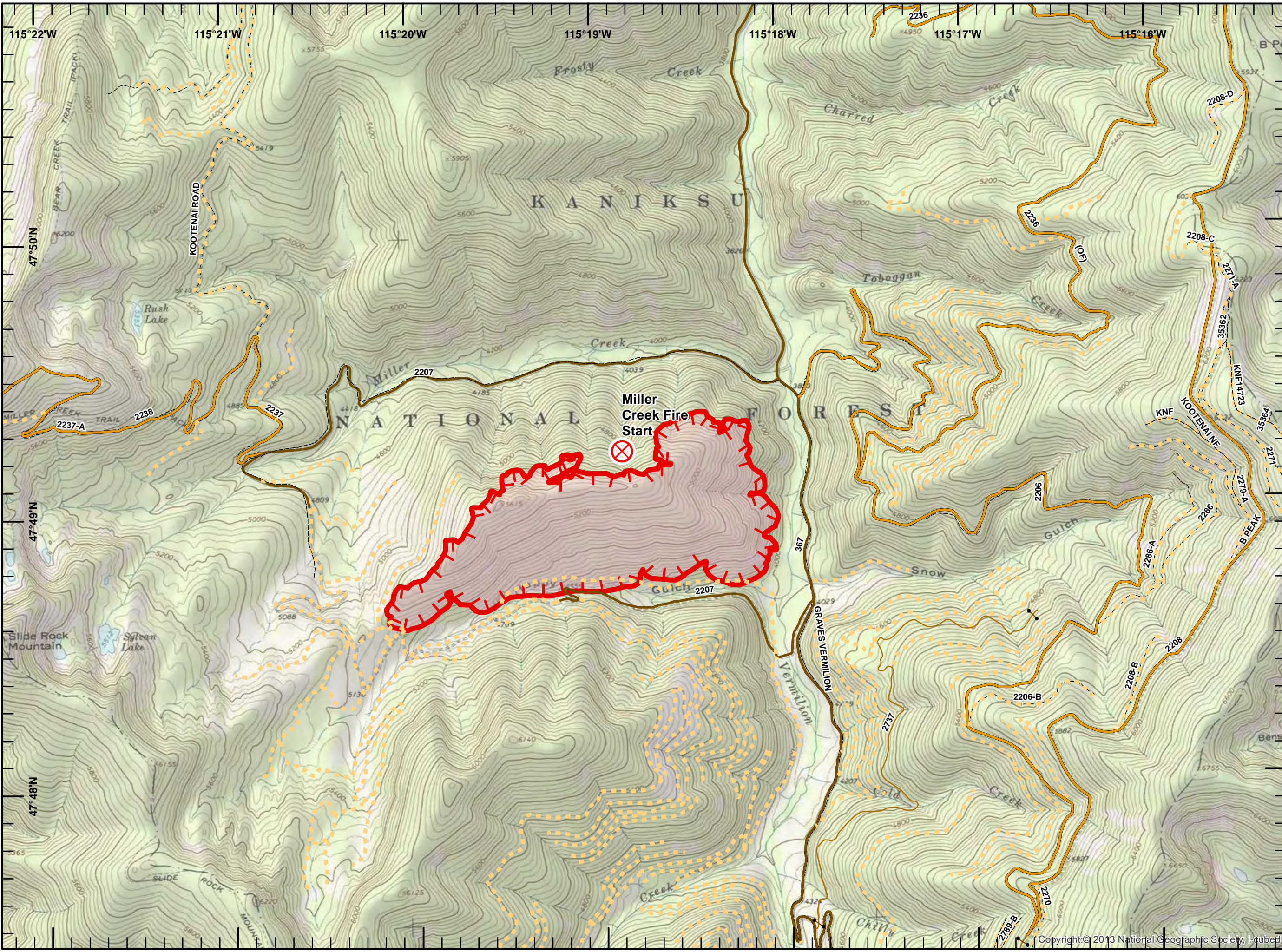


**Hwy 200 Complex
IAP Map**
Miller Creek
MT-LNF-001811
9/6/2017
Day Shift

- Legend**
-  Fire Origin
 - FS Roads (IGBC)**
 -  IMPASSABLE TO MOTORIZED VEHICLES
 -  RESTRICTED/LEGAL... GATED ADMIN USE
 -  BARRIERED/LEGALLY NO ADMIN USE
 -  OPEN DURING BEAR SEASON
 -  <all other values>
 - FS roads -**
 -  Basic Custodial (Closed)
 -  High Clearance Vehicles
 -  Uncontrolled Fire Edge
 -  Wildfire Daily Fire Perimeter



SIA - NR WMT
9/5/2017
2337

**Hwy 200 Complex
IAP Map**
Deep Creek
MT-LNF-001811
9/6/2017
Day Shift

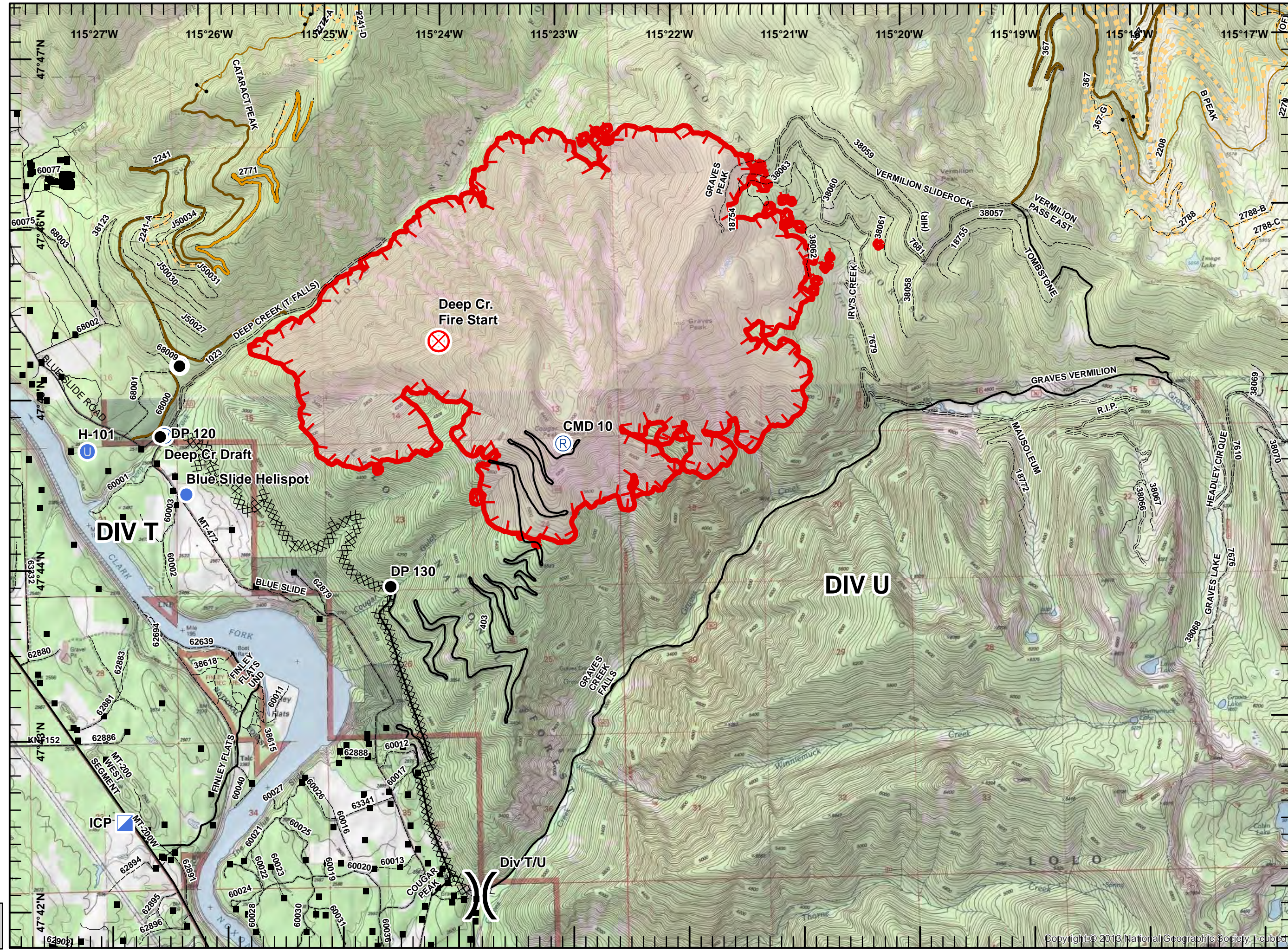
- Legend**
- Structures
 - Drop Point
 - ⊗ Fire Origin
 - U Unimproved Landing Area
 - Helispot
 - ▣ Incident Command Post
 - Ⓡ Repeater
 - Ⓢ Staging Area
 - Ⓜ Water Source
 - ⎵ Division Break

- Private Road
- County Road
- FS Roads (IGBC)**
- IMPASSABLE TO MOTORIZED VEHICLES
- RESTRICTED/LEGAL... GATED ADMIN USE
- BARRIERED/LEGALLY NO ADMIN USE
- OPEN DURING BEAR SEASON
- <all other values>
- FS roads -**
- Basic Custodial (Closed)
- High Clearance Vehicles
- Gravel/Paved Roads
- Uncontrolled Fire Edge
- XXXXX Miles Dozer Line
- Wildfire Daily Fire
- 10.20.30.40.5

NAD 83
UTM Zone 11

SIA - NR WMT
9/5/2017
2337

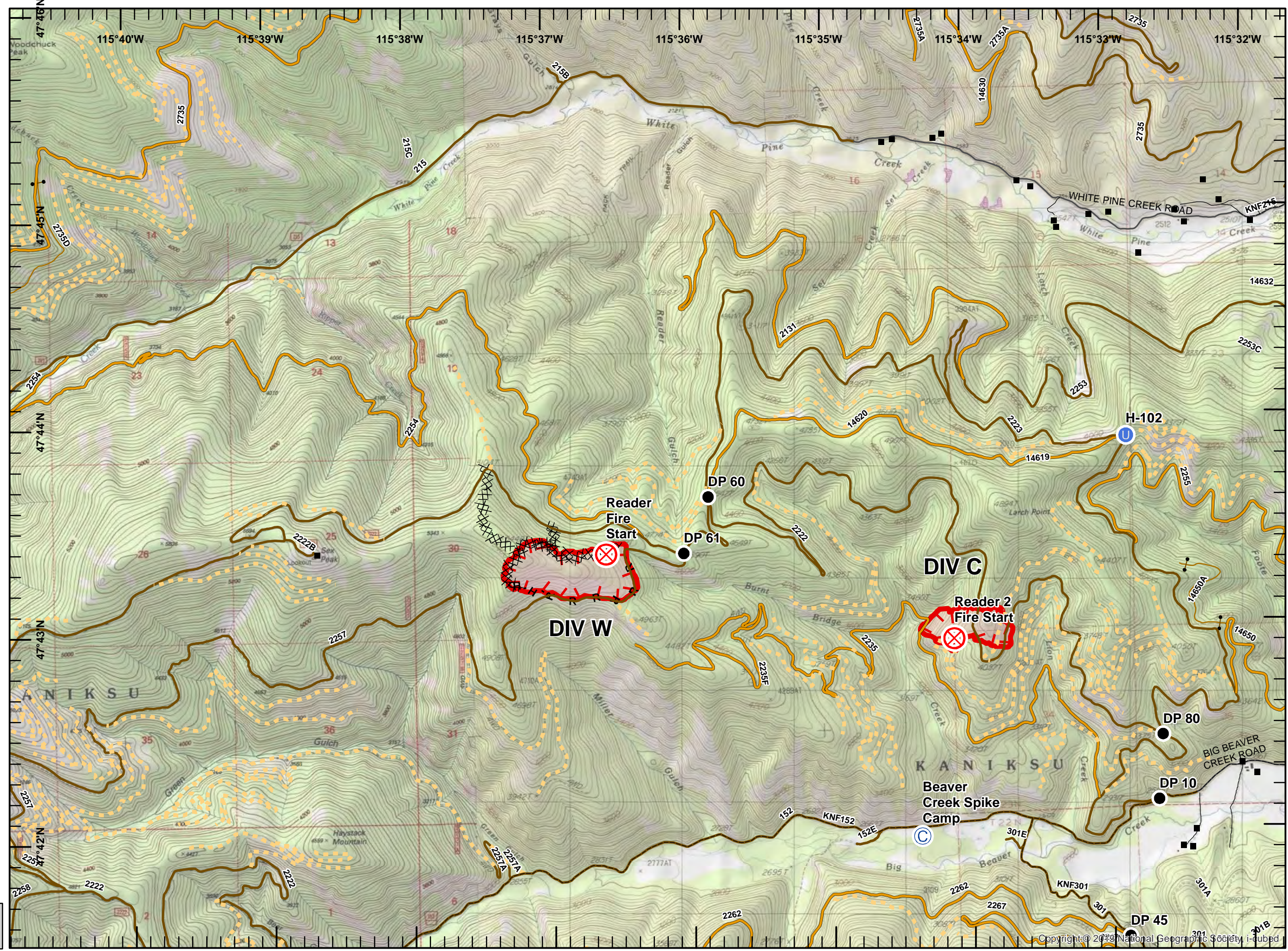




Hwy 200 Complex IAP Map

Readers
 MT-LNF-001811
 9/6/2017
 Day Shift
 Page 3 of 7

- Structures
- ⊙ Camp
- Drop Point
- ⊗ Fire Origin
- ⊙ Unimproved Landing Area
- Private Road
- County Road
- FS Roads (IGBC)**
- IMPASSABLE TO MOTORIZED VEHICLES
- RESTRICTED/LEGAL... GATED ADMIN USE
- BARRIERED/LEGALLY NO ADMIN USE
- OPEN DURING BEAR SEASON
- <all other values>
- ⊥ Uncontrolled Fire Edge
- XXXXX Completed Dozer Line
- H - H Completed Hand Line
- R - R Road as Completed Line
- Wildfire Daily Fire



Miles
 0 0.1 0.2 0.3 0.4 0.5

NAD 83
 UTM Zone 11

SIA - NR WMT
 9/5/2017
 2337

Hwy 200 Complex IAP Map

lower Beaver Ck.

MT-LNF-001811

9/6/2017

Day Shift

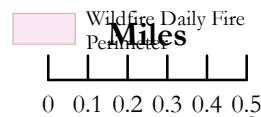
Page 4 of 7

Legend

- Structures
- Drop Point
- Fire Origin
- Unimproved Landing Area
- Helispot
- Incident Command Post
- Staging Area
- Water Source
- Division Break

- Private Road
- County Road
- FS Roads (IGBC)
 - IMPASSABLE TO MOTORIZED VEHICLES
 - RESTRICTED/LEGAL... GATED ADMIN USE
 - BARRIERED/LEGALLY NO ADMIN USE
 - OPEN DURING BEAR SEASON
 - <all other values>

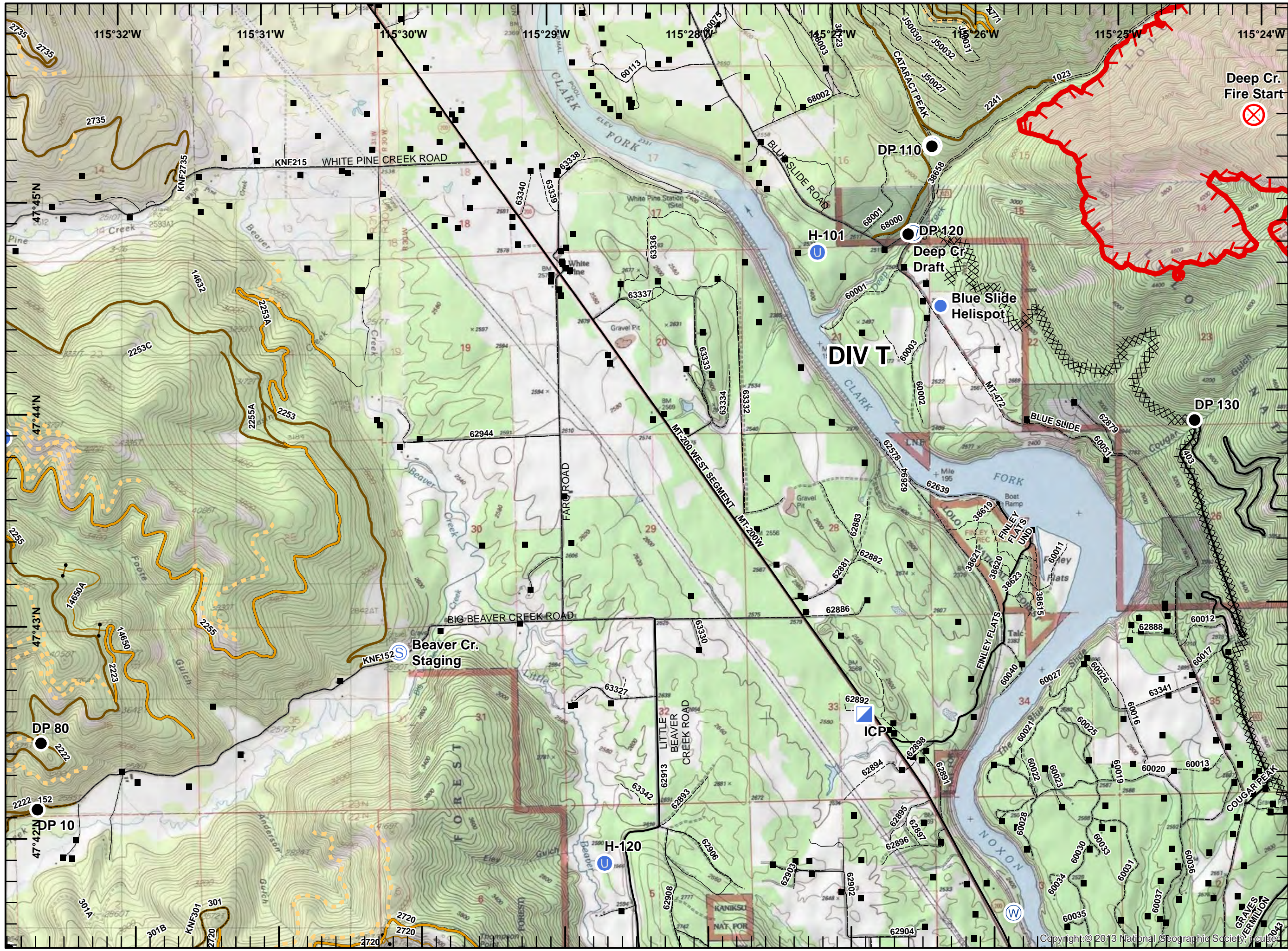
- FS roads -
 - Basic Custodial (Closed)
 - High Clearance Vehicles
 - Gravel/Paved Roads
 - Uncontrolled Fire Edge
 - Completed Dozer Line



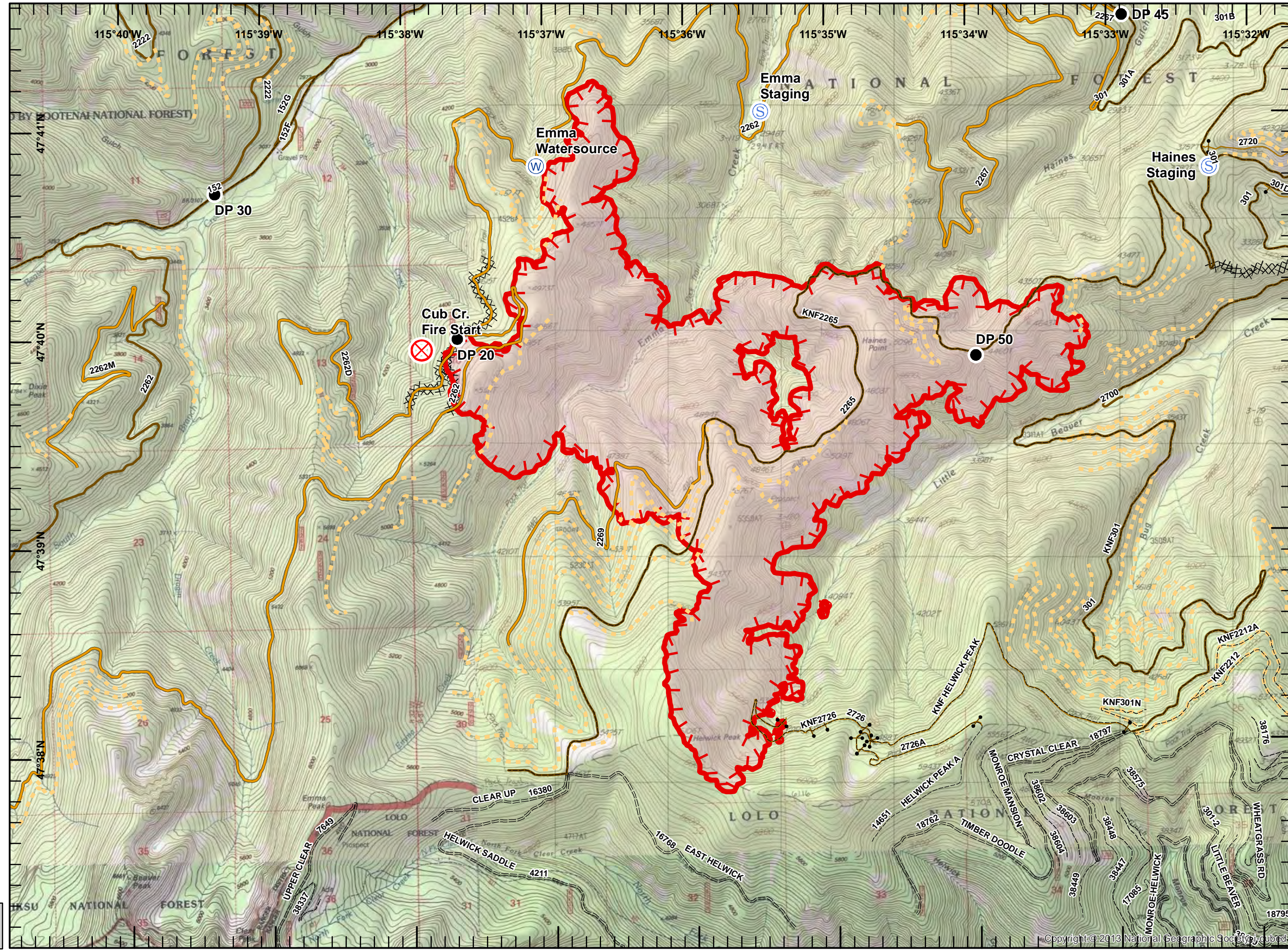
NAD 83 UTM Zone 11



SIA - NR WMT
9/5/2017
2338



- Drop Point
- ⊗ Fire Origin
- Ⓢ Staging Area
- Ⓜ Water Source
- FS Roads (IGBC)**
- IMPASSABLE TO MOTORIZED VEHICLES
- RESTRICTED/LEGAL... GATED ADMIN USE
- ⚡ BARRIERED/LEGALLY NO ADMIN USE
- OPEN DURING BEAR SEASON
- <all other values>
- FS roads -**
- Basic Custodial (Closed)
- === High Clearance Vehicles
- ┃ Uncontrolled Fire Edge
- ⊗ Completed Dozer Line
- Wildfire Daily Fire

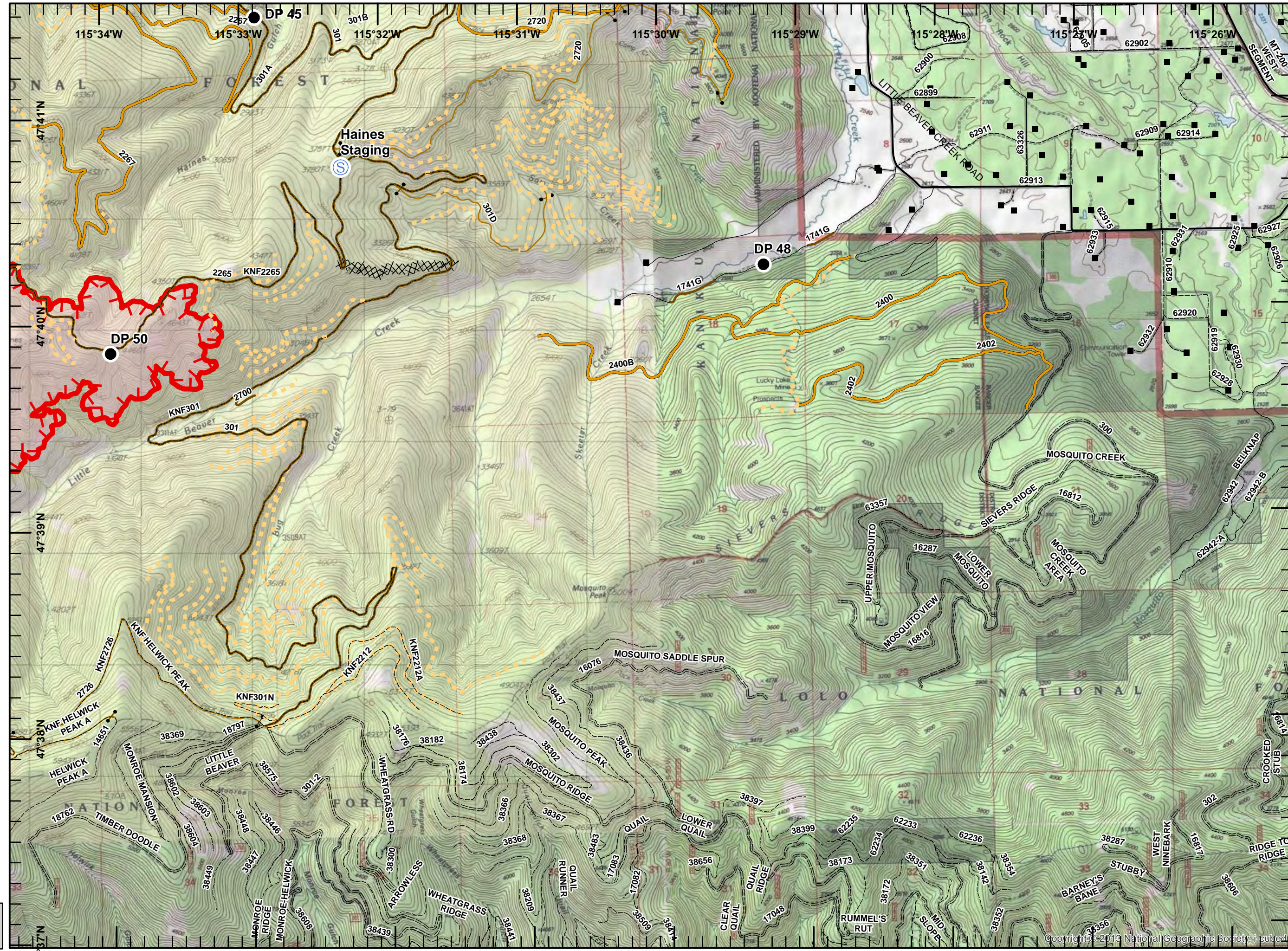


Miles
0 0.1 0.2 0.3 0.4 0.5

NAD 83
UTM Zone 11

SIA - NR WMT
9/5/2017
2338

- Legend**
- Structures
 - Drop Point
 - Ⓢ Staging Area
 - Private Road
 - County Road
 - FS Roads (IGBC)**
 - IMPASSABLE TO MOTORIZED VEHICLES
 - RESTRICTED/LEGAL... GATED ADMIN USE
 - BARRIERED/LEGALLY NO ADMIN USE
 - OPEN DURING BEAR SEASON
 - <all other values>
 - FS roads -**
 - Basic Custodial (Closed)
 - High Clearance Vehicles
 - Gravel/Paved Roads
 - Uncontrolled Fire Edge
 - XXXXX Completed Dozer Line
 - Wildfire Daily Fire Perimeter



Miles
0 0.1 0.2 0.3 0.4 0.5

NAD 83
UTM Zone 11

SIA - NR WMT
9/5/2017
2338

Hwy 200 Complex
IAP Map
Sheep Gap
MT-LNF-001811
9/6/2017
Day Shift

Legend

- Structures
 - Closure
 - Drop Point
 - Fire Origin
 - Landmark
 - Spot Fire
 - Staging Area
 - Water Source
 - Division Break
 - <all other values>
 - FS roads -**
 - Basic Custodial (Closed)
 - High Clearance Vehicles
 - Gravel/Paved Roads
 - Uncontrolled Fire Edge
 - Completed Dozer Line
 - Completed Hand Line
 - Road as Completed Line
 - Proposed Dozer Line
 - Wildfire Daily Fire Perimeter
- Miles
0 0.1 0.2 0.3 0.4 0.5
- NAD 83
UTM Zone 11
- SIA - NR WMT
9/5/2017
2338

