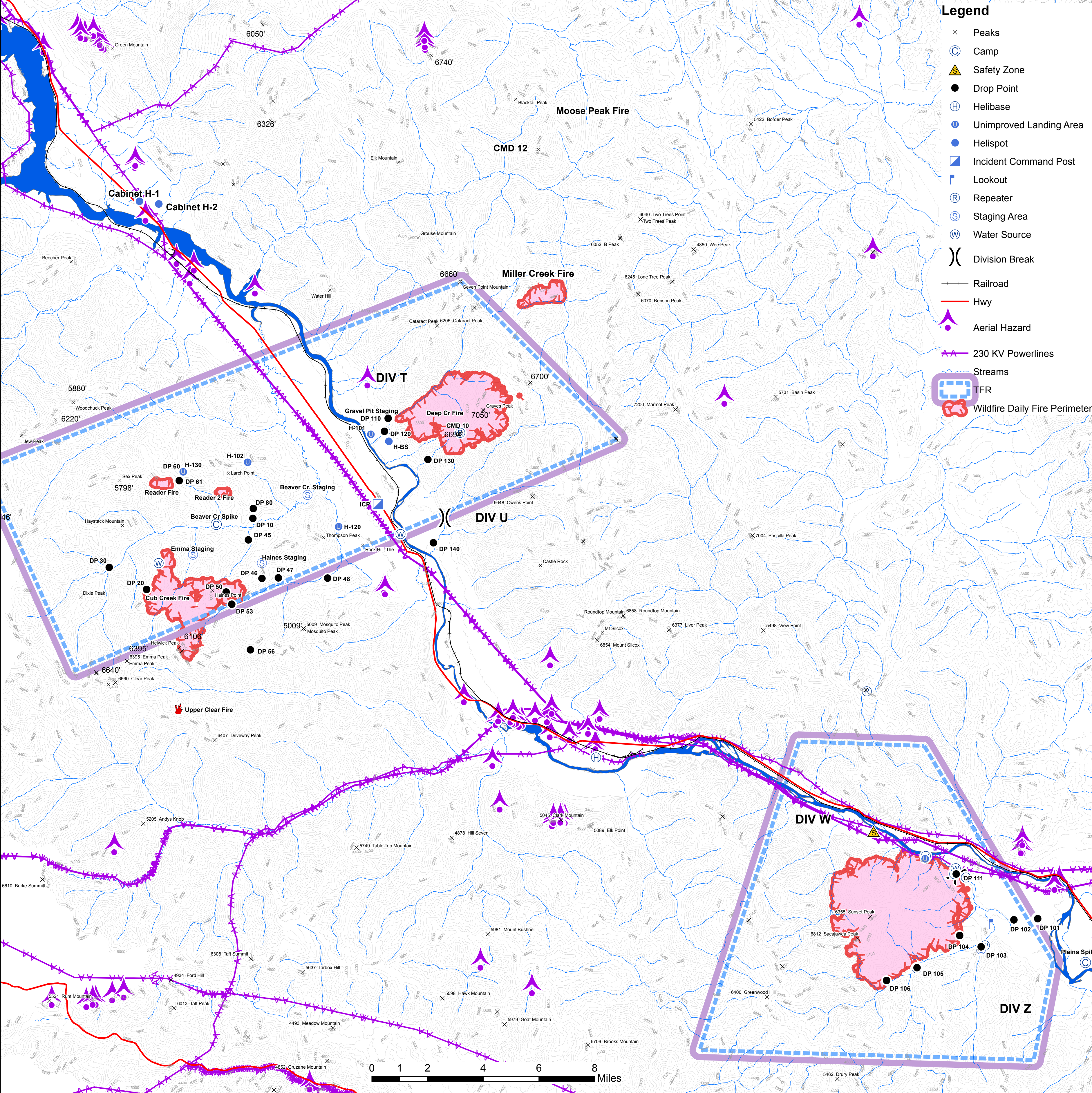


Legend

- × Peaks
- ⊙ Camp
- ⚠ Safety Zone
- Drop Point
- ⊕ Helibase
- ⊙ Unimproved Landing Area
- Helispot
- ▣ Incident Command Post
- ⊔ Lookout
- Ⓡ Repeater
- Ⓢ Staging Area
- Ⓜ Water Source
-) Division Break
- Railroad
- Hwy
- ⚡ Aerial Hazard
- ⚡ 230 KV Powerlines
- Streams
- Ⓜ TFR
- Ⓜ Wildfire Daily Fire Perimeter



Hwy 200 Complex
Avenza
Pilots Map
09/07/2017
200' Contours



Hwy 200 Complex



icon1e20170906ad3zone11

Label	Latitude	Longitude	DP 61	47° 43.360' N	115° 36.040' W	H-Blue Slide	47° 44.463' N	115° 26.321' W
Beaver Cr Spike	47° 41.975' N	115° 34.369' W	DP 80	47° 42.447' N	115° 32.637' W	H-101	47° 44.692' N	115° 27.143' W
Plains Spike	47° 27.697' N	114° 54.772' W	DP 101	47° 29.103' N	114° 56.907' W	H-102	47° 43.893' N	115° 32.864' W
Div W/Z	47° 30.565' N	115° 0.603' W	DP 102	47° 29.087' N	114° 58.002' W	H-120	47° 41.831' N	115° 28.716' W
Div T/U	47° 42.043' N	115° 23.805' W	DP 103	47° 28.266' N	114° 59.545' W	H-130	47° 43.632' N	115° 35.853' W
DP 10	47° 42.136' N	115° 32.671' W	DP 104	47° 28.644' N	115° 0.521' W	H-200	47° 31.063' N	115° 2.020' W
DP 20	47° 39.978' N	115° 37.640' W	DP 105	47° 27.673' N	115° 2.515' W	ICP	47° 42.512' N	115° 26.882' W
DP 30	47° 40.691' N	115° 39.343' W	DP 106	47° 27.296' N	115° 3.932' W	CMD 11	47° 36.330' N	115° 4.510' W
DP 45	47° 41.477' N	115° 32.893' W	DP 110	47° 45.182' N	115° 26.329' W	CMD 10	47° 44.683' N	115° 23.009' W
DP 46	47° 40.262' N	115° 32.300' W	DP 111	47° 30.565' N	115° 0.603' W	Safety Zone	47° 31.943' N	115° 4.362' W
DP 47	47° 40.264' N	115° 31.543' W	DP 120	47° 44.770' N	115° 26.508' W	Beaver Cr. Staging	47° 42.844' N	115° 30.122' W
DP 48	47° 40.234' N	115° 29.269' W	DP 130	47° 43.865' N	115° 24.531' W	Rural Staging	47° 29.106' N	114° 56.913' W
DP 50	47° 39.858' N	115° 33.967' W	DP 140	47° 41.268' N	115° 24.351' W	Swamp Staging	47° 28.185' N	114° 59.556' W
DP 53	47° 39.470' N	115° 33.714' W	TFalls Helibase	47° 34.465' N	115° 17.063' W	Emma Staging	47° 41.043' N	115° 35.465' W
DP 56	47° 38.042' N	115° 32.896' W	Cabinet H-1	47° 52.096' N	115° 37.650' W	Haines Staging	47° 40.743' N	115° 32.292' W
DP 60	47° 43.630' N	115° 35.860' W	Cabinet H-2	47° 52.002' N	115° 36.759' W	Gravel Pit Staging	47° 45.186' N	115° 26.326' W