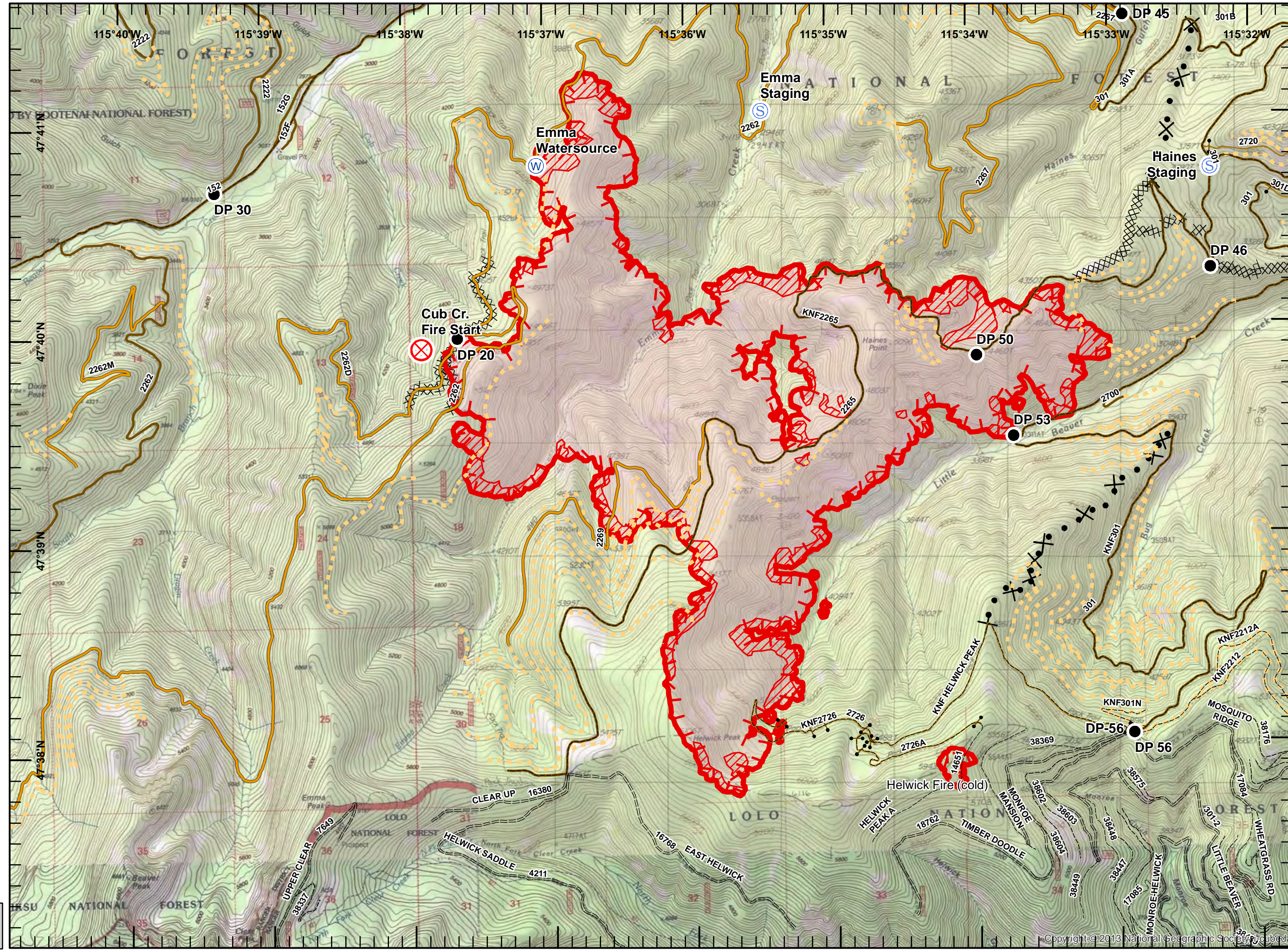


**Hwy 200 Complex
IAP Map**
Cub Creek
MT-LNF-001811
9/8/2017
Day Shift

Page 5 of 8

- Drop Point
- ⊗ Fire Origin
- Ⓢ Staging Area
- Ⓜ Water Source
- FS Roads (IGBC)**
 - IMPASSABLE TO MOTORIZED VEHICLES
 - RESTRICTED/LEGAL GATED ADMIN USE
 - BARRIERED/LEGALLY NO ADMIN USE
 - OPEN DURING BEAR SEASON
 - <all other values>
- FS roads -**
 - Basic Custodial (Closed)
 - High Clearance Vehicles
- Uncontrolled Fire Edge
- Completed Dozer Line
- Proposed Dozer Line
- IR Intense Heat



Miles
0 0.1 0.2 0.3 0.4 0.5
NAD 83
UTM Zone 11

SIA - NR WMT
9/7/2017
2323