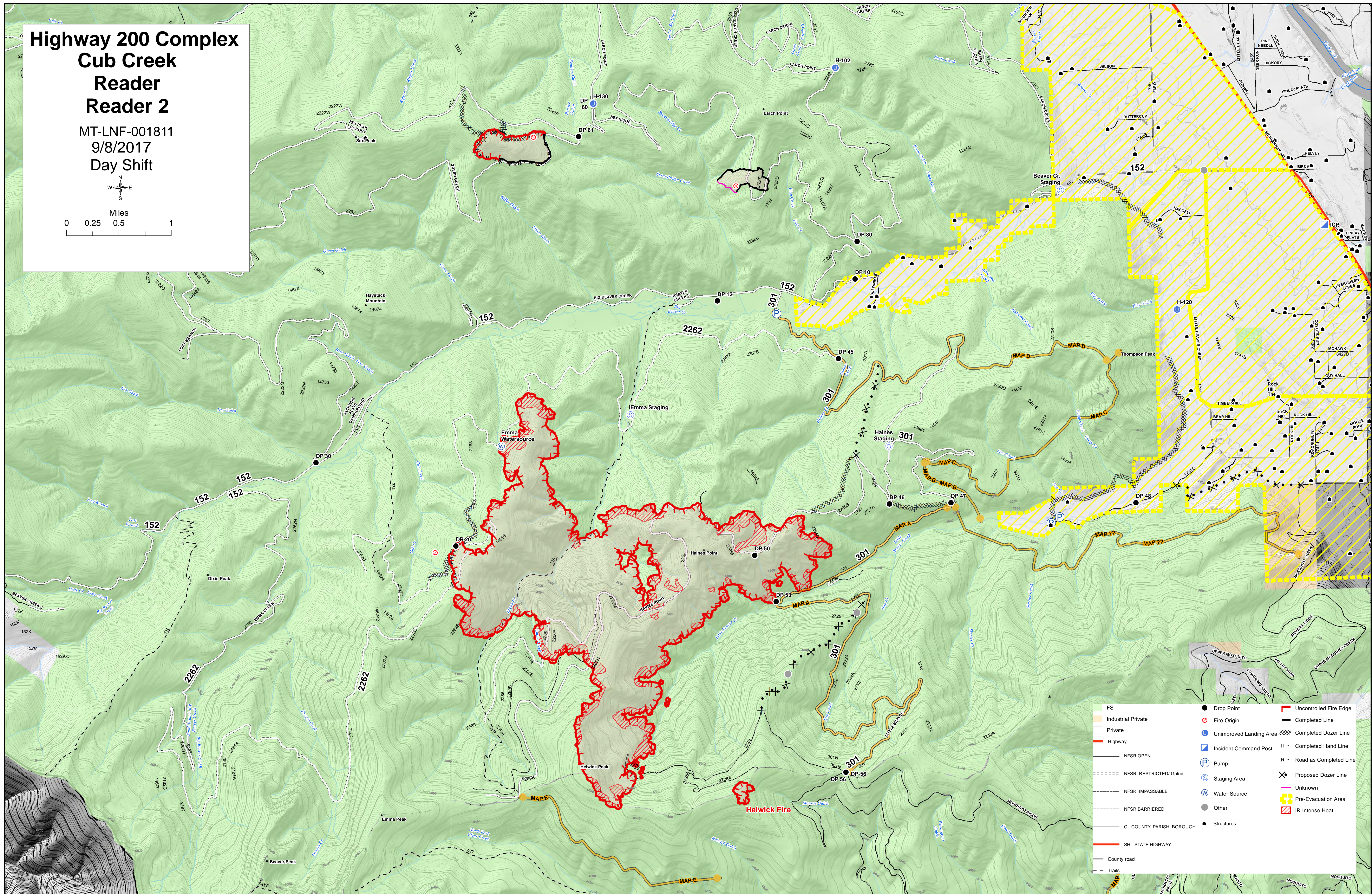
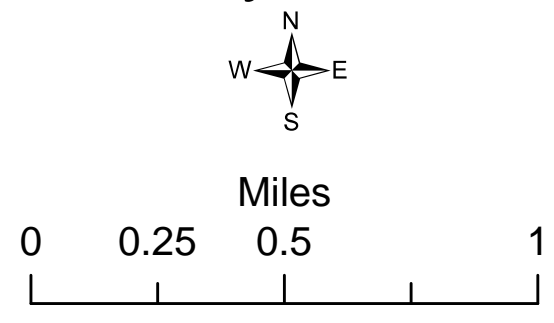


Highway 200 Complex Cub Creek Reader Reader 2

MT-LNF-001811
9/8/2017
Day Shift



FS	Drop Point	Uncontrolled Fire Edge
Industrial Private	Fire Origin	Completed Line
Private	Unimproved Landing Area	Completed Dozer Line
Highway	Incident Command Post	Completed Hand Line
NFSR OPEN	Pump	R - Road as Completed Line
NFSR RESTRICTED/ Gated	Staging Area	Proposed Dozer Line
NFSR IMPASSABLE	Water Source	Unknown
NFSR BARRIERED	Other	Pre-Evacuation Area
C - COUNTY, PARISH, BOROUGH	Structures	IR Intense Heat
SH - STATE HIGHWAY		
County road		
Trails		