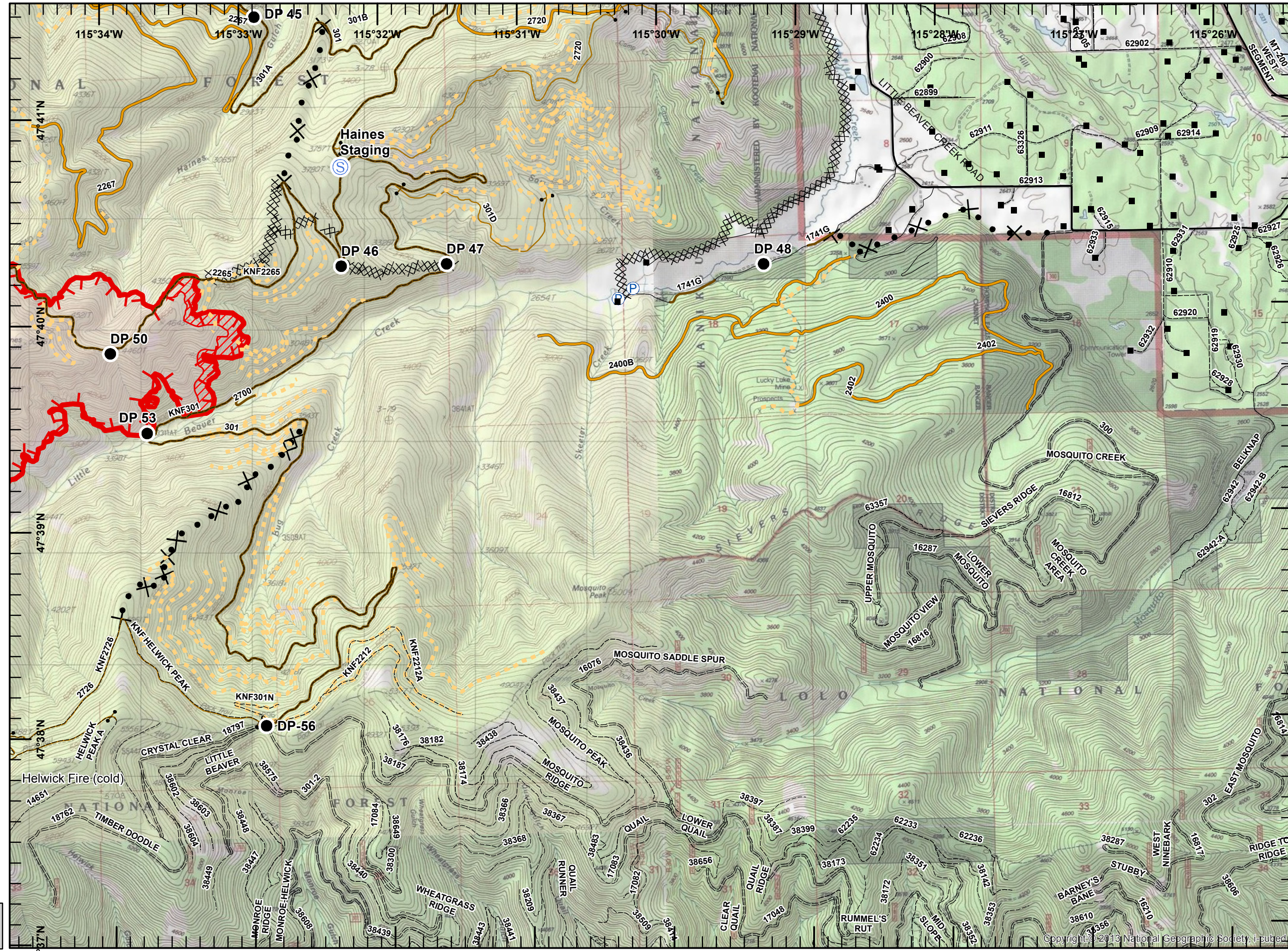


**Hwy 200 Complex
IAP Map**
Cub Ck p2
MT-LNF-001811
9/9/2017
Day Shift

Page 6 of 8

- Structures
- Drop Point
- Ⓟ Pump
- Ⓢ Staging
- Private Road
- County Road
- FS Roads (IGBC)**
- IMPASSABLE TO MOTORIZED VEHICLES
- RESTRICTED/LEGAL GATED ADMIN USE
- BARRIERED/LEGALLY NO ADMIN USE
- OPEN DURING BEAR SEASON
- <all other values>
- FS roads -**
- Basic Custodial (Closed)
- High Clearance Vehicles
- Gravel/Paved Roads
- Uncontrolled Fire Edge
- Completed Dozer Line
- Proposed Dozer Line
- IR Intense Heat



Miles
0 0.1 0.2 0.3 0.4 0.5
NAD 83
UTM Zone 11



SIA - NR WMT
9/8/2017
2348