

Hwy 200 Complex IAP Map

Readers

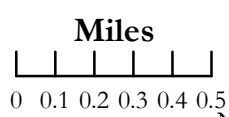
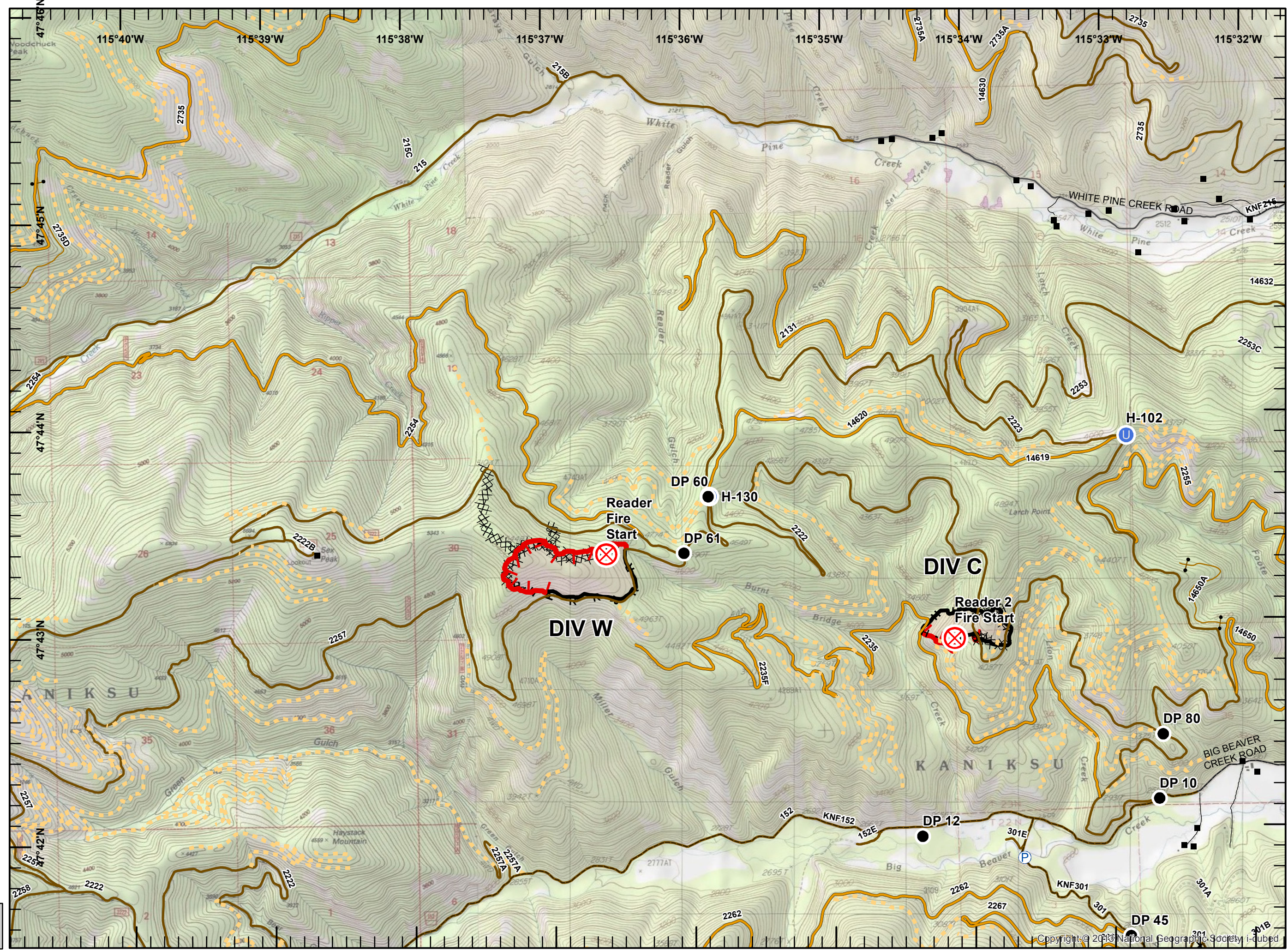
MT-LNF-001811

9/9/2017

Day Shift

Page 3 of 8

- Structures
- Drop Point
- ⊗ Fire Origin
- U Unimproved Landing Area
- P Pump
- Private Road
- County Road
- FS Roads (IGBC)**
- IMPASSABLE TO MOTORIZED VEHICLES
- RESTRICTED/LEGAL... GATED ADMIN USE
- BARRIERED/LEGALLY NO ADMIN USE
- OPEN DURING BEAR SEASON
- <all other values>
- Uncontrolled Fire Edge
- Completed Line
- XXXXX Completed Dozer Line
- H - H Completed Hand Line
- R - R Road as Completed Line
- ⊗ ● Proposed Dozer Line



NAD 83
UTM Zone 11

SIA - NR WMT
9/8/2017
2348

