
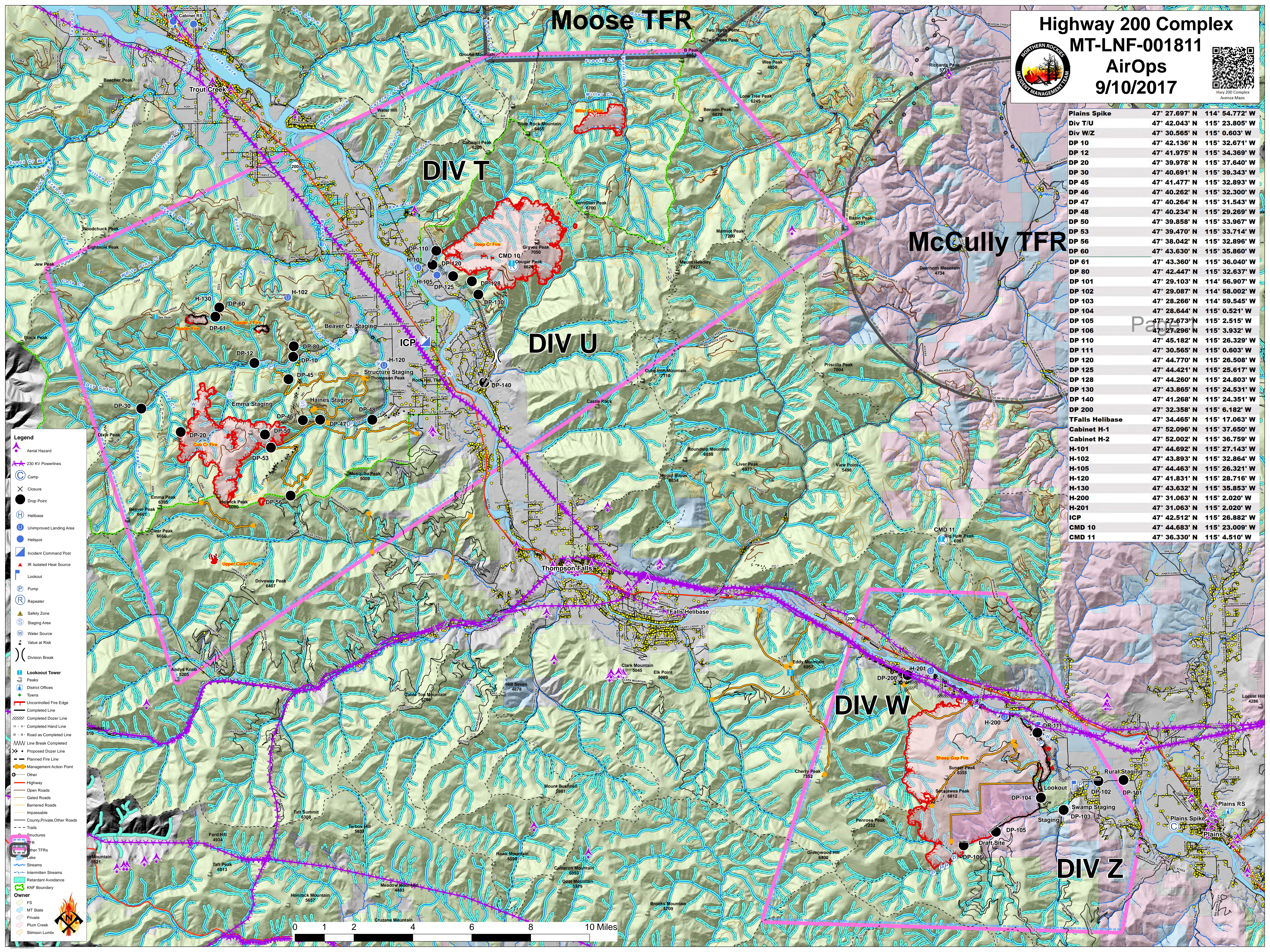


Moose TFR

Highway 200 Complex
MT-LNF-001811
AirOps
9/10/2017





Plains Spike	47° 27.697' N	114° 54.772' W
Div T/U	47° 42.043' N	115° 23.805' W
Div W/Z	47° 30.565' N	115° 0.603' W
DP 10	47° 42.136' N	115° 32.671' W
DP 12	47° 41.975' N	115° 34.369' W
DP 20	47° 39.978' N	115° 37.640' W
DP 30	47° 40.691' N	115° 39.343' W
DP 45	47° 41.477' N	115° 32.893' W
DP 46	47° 40.262' N	115° 32.300' W
DP 47	47° 40.264' N	115° 31.543' W
DP 48	47° 40.234' N	115° 29.269' W
DP 50	47° 39.858' N	115° 33.967' W
DP 53	47° 39.470' N	115° 33.714' W
DP 56	47° 38.042' N	115° 32.896' W
DP 60	47° 43.630' N	115° 35.860' W
DP 61	47° 43.360' N	115° 36.040' W
DP 80	47° 42.447' N	115° 32.637' W
DP 101	47° 29.103' N	114° 56.907' W
DP 102	47° 29.087' N	114° 58.002' W
DP 103	47° 28.266' N	114° 59.545' W
DP 104	47° 28.644' N	115° 0.521' W
DP 105	47° 27.673' N	115° 2.515' W
DP 106	47° 27.296' N	115° 3.932' W
DP 110	47° 45.182' N	115° 26.329' W
DP 111	47° 30.565' N	115° 0.603' W
DP 120	47° 44.770' N	115° 26.508' W
DP 125	47° 44.421' N	115° 25.617' W
DP 128	47° 44.260' N	115° 24.803' W
DP 130	47° 43.865' N	115° 24.531' W
DP 140	47° 41.268' N	115° 24.351' W
DP 200	47° 32.358' N	115° 6.182' W
TFalls Helibase	47° 34.465' N	115° 17.063' W
Cabinet H-1	47° 52.096' N	115° 37.650' W
Cabinet H-2	47° 52.002' N	115° 36.759' W
H-101	47° 44.692' N	115° 27.143' W
H-102	47° 43.893' N	115° 32.864' W
H-105	47° 44.463' N	115° 26.321' W
H-120	47° 41.831' N	115° 28.716' W
H-130	47° 43.632' N	115° 35.853' W
H-200	47° 31.063' N	115° 2.020' W
H-201	47° 31.063' N	115° 2.020' W
ICP	47° 42.512' N	115° 26.882' W
CMD 10	47° 44.683' N	115° 23.009' W
CMD 11	47° 36.330' N	115° 4.510' W

Legend

- Aerial Hazard
- 230 KV Powerlines
- Camp
- Closure
- Drop Point
- Helibase
- Unimproved Landing Area
- Helipost
- Incident Command Post
- IR Isolated Heat Source
- Lookout
- Pump
- Repeater
- Safety Zone
- Staging Area
- Water Source
- Value at Risk
- Division Break
- Lookout Tower
- Peaks
- District Offices
- Towns
- Uncontrolled Fire Edge
- Completed Line
- Completed Dozer Line
- Completed Hand Line
- Road as Completed Line
- Line Break Completed
- Proposed Dozer Line
- Planned Fire Line
- Management Action Point
- Other
- Highway
- Open Roads
- Gated Roads
- Barred Roads
- Impassable
- County/Private/Other Roads
- Trails
- Structures
- Other TFRs
- Lake
- Streams
- Intermittent Streams
- Retardant Avoidance
- KNF Boundary
- Owner
- FS
- MT State
- Private
- Plum Creek
- Stimson Lumber

