

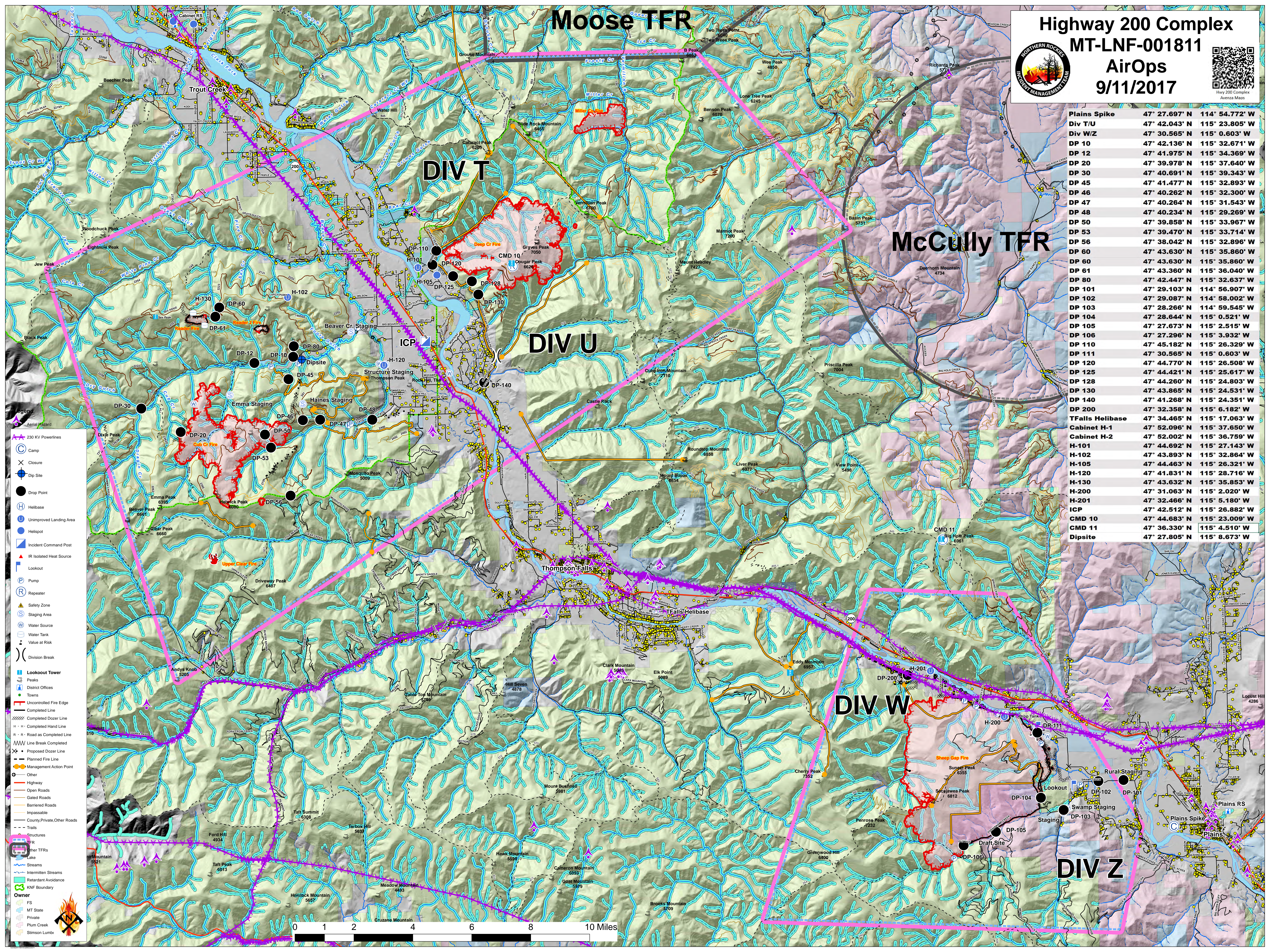


# Moose TFR

**Highway 200 Complex**  
**MT-LNF-001811**  
**AirOps**  
**9/11/2017**

Plains Spike	47° 27.697' N	114° 54.772' W
Div T/U	47° 42.043' N	115° 23.805' W
Div W/Z	47° 30.565' N	115° 0.603' W
DP 10	47° 42.136' N	115° 32.671' W
DP 12	47° 41.975' N	115° 34.369' W
DP 20	47° 39.978' N	115° 37.640' W
DP 30	47° 40.691' N	115° 39.343' W
DP 45	47° 41.477' N	115° 32.893' W
DP 46	47° 40.262' N	115° 32.300' W
DP 47	47° 40.264' N	115° 31.543' W
DP 48	47° 40.234' N	115° 29.269' W
DP 50	47° 39.858' N	115° 33.967' W
DP 53	47° 39.470' N	115° 33.714' W
DP 56	47° 38.042' N	115° 32.896' W
DP 60	47° 43.630' N	115° 35.860' W
DP 61	47° 43.630' N	115° 35.860' W
DP 66	47° 43.360' N	115° 36.040' W
DP 80	47° 42.447' N	115° 32.637' W
DP 101	47° 29.103' N	114° 56.907' W
DP 102	47° 29.087' N	114° 58.002' W
DP 103	47° 28.266' N	114° 59.545' W
DP 104	47° 28.644' N	115° 0.521' W
DP 105	47° 27.673' N	115° 2.515' W
DP 106	47° 27.296' N	115° 3.932' W
DP 110	47° 45.182' N	115° 26.329' W
DP 111	47° 30.565' N	115° 0.603' W
DP 120	47° 44.770' N	115° 26.508' W
DP 125	47° 44.421' N	115° 25.617' W
DP 128	47° 44.260' N	115° 24.803' W
DP 130	47° 43.865' N	115° 24.531' W
DP 140	47° 41.268' N	115° 24.351' W
DP 200	47° 32.358' N	115° 6.182' W
TFalls Helibase	47° 34.465' N	115° 17.063' W
Cabinet H-1	47° 52.096' N	115° 37.650' W
Cabinet H-2	47° 52.002' N	115° 36.759' W
H-101	47° 44.692' N	115° 27.143' W
H-102	47° 43.893' N	115° 32.864' W
H-105	47° 44.463' N	115° 26.321' W
H-120	47° 41.831' N	115° 28.716' W
H-130	47° 43.632' N	115° 35.853' W
H-200	47° 31.063' N	115° 2.020' W
H-201	47° 32.466' N	115° 5.180' W
ICP	47° 42.512' N	115° 26.882' W
CMD 10	47° 44.683' N	115° 23.009' W
CMD 11	47° 36.330' N	115° 4.510' W
Dipsite	47° 27.805' N	115° 8.673' W

- Legend**
- 230 KV Powerlines
  - Camp
  - Closure
  - Dip Site
  - Drop Point
  - Helibase
  - Unimproved Landing Area
  - Helispot
  - Incident Command Post
  - IR Isolated Heat Source
  - Lookout
  - Pump
  - Repeater
  - Safety Zone
  - Staging Area
  - Water Source
  - Water Tank
  - Value at Risk
  - Division Break
  - Lookout Tower
  - Peaks
  - District Offices
  - Towns
  - Uncontrolled Fire Edge
  - Completed Line
  - Completed Dozer Line
  - Completed Hand Line
  - Road as Completed Line
  - Line Break Completed
  - Proposed Dozer Line
  - Planned Fire Line
  - Management Action Point
  - Other
  - Highway
  - Open Roads
  - Gated Roads
  - Bartered Roads
  - Impassable
  - County/Private/Other Roads
  - Trails
  - Structures
  - Other TFRs
  - Streams
  - Intermittent Streams
  - Retardant Avoidance
  - KNF Boundary
  - Owner
  - FS
  - MT State
  - Private
  - Plum Creek
  - Stimson Lumber

0 1 2 4 6 8 10 Miles