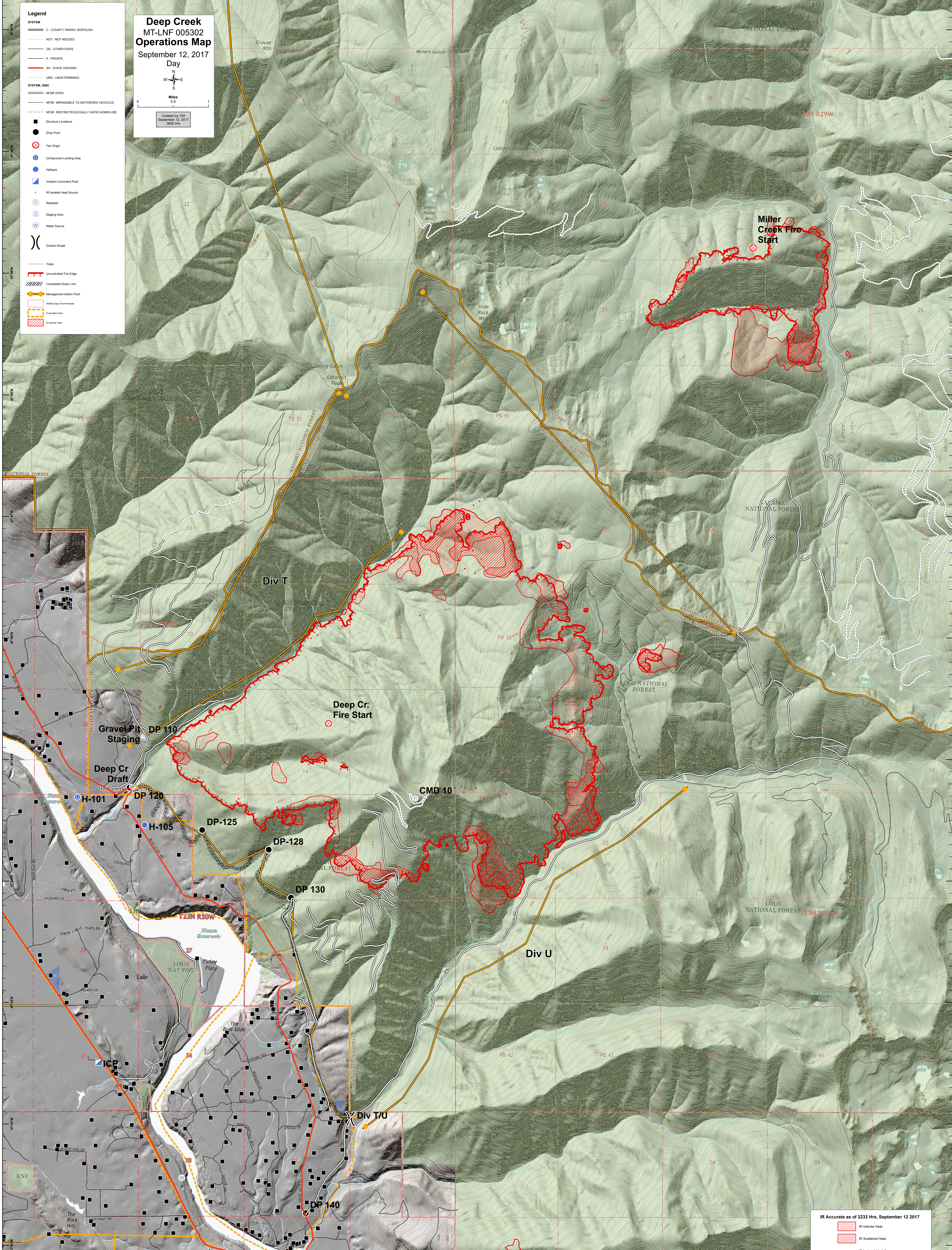


Deep Creek MT-LNF 005302 Operations Map

September 12, 2017
Day

Created by EM
September 12, 2017
0900 hrs

- Legend**
- SYSTEM**
- C - COUNTY, PARISH, BOROUGH
 - NOT - NOT NEEDED
 - OS - OTHER STATE
 - P - PRIVATE
 - SH - STATE HIGHWAY
 - UND - UNDETERMINED
- SYSTEM, IGB/C**
- NFSR OPEN
 - NFSR IMPASSIBLE TO MOTORIZED VEHICLES
 - NFSR RESTRICTED/LEGALLY GATED ADMIN USE
- Structure Locations**
- Drop Point
 - Fire Origin
 - Unimproved Landing Area
 - Helispot
 - Incident Command Post
 - IR Isolated Heat Source
 - Repeater
 - Staging Area
 - Water Source
 - Division Break
- Trails**
- Uncontrolled Fire Edge
 - Completed Dozer Line
 - Management Action Point
 - Woodsy Day Fire Perimeter
 - Evaluation Area
 - IR Intense Heat



IR Accurate as of 2333 Hrs, September 12 2017

- IR Intense Heat
- IR Scattered Heat
- IR Isolated Heat Sources