

**Hwy 200 Complex  
IAP Map  
Cub Creek  
MT-LNF-001811  
9/13/2017  
Day Shift**

Page 5 of 8

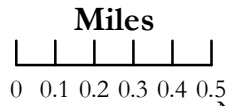
- Drop Point
- ⊗ Fire Origin
- ▲ IR Isolated Heat Source
- Ⓟ Pump
- Ⓢ Staging
- Ⓜ Water Source



- FS Roads (IGBC)**
- IMPASSABLE TO MOTORIZED VEHICLES
  - RESTRICTED/LEGAL... GATED ADMIN USE
  - BARRIERED/LEGALLY NO ADMIN USE
  - OPEN DURING BEAR SEASON
  - <all other values>

- FS roads -**
- Basic Custodial (Closed)
  - High Clearance Vehicles

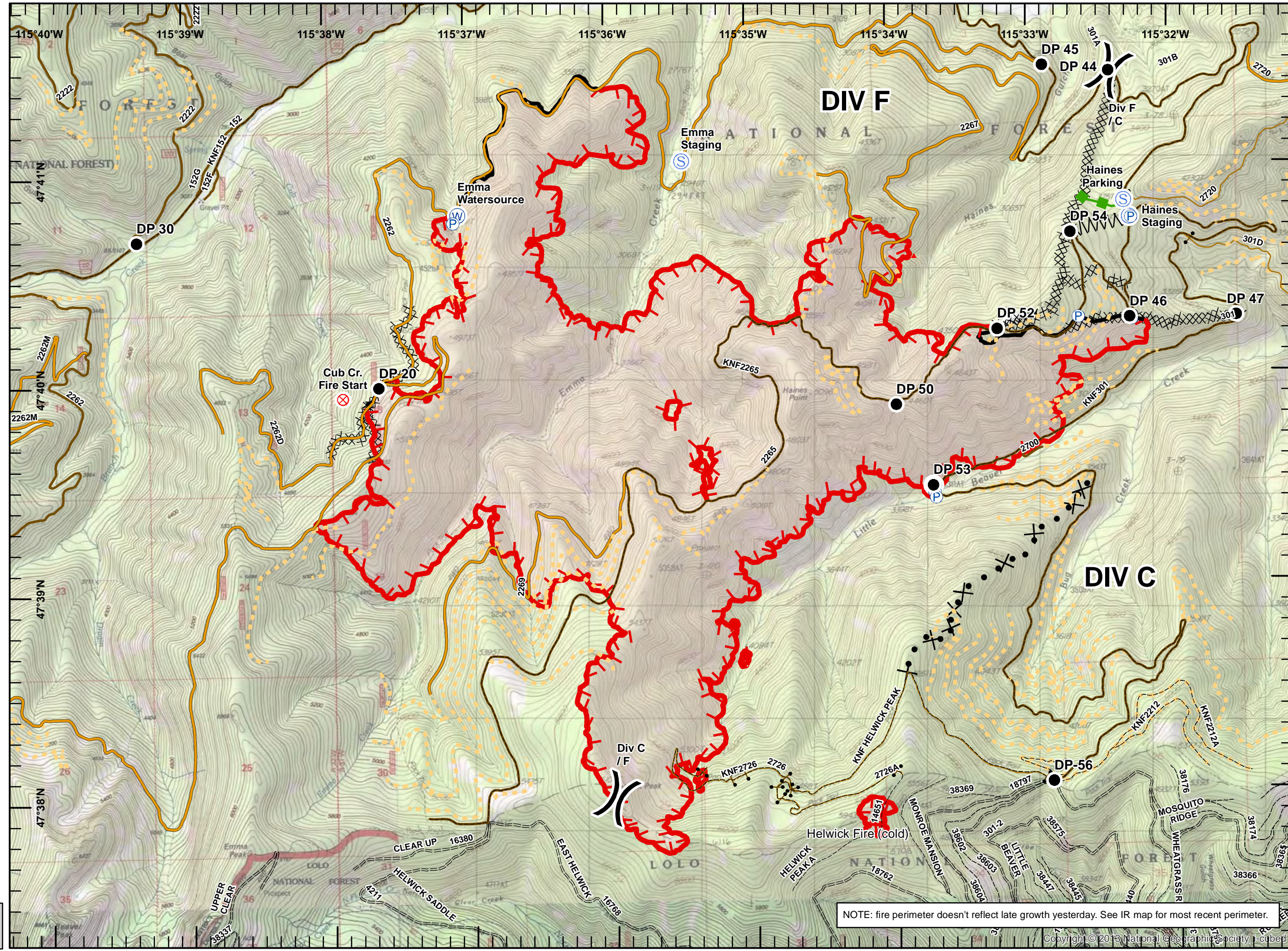
- Uncontrolled Fire Edge
- Completed Line
- XXXXX Completed Dozer Line
- ~ Line Break Completed
- ⊗ Proposed Dozer Line
- Escape Route



NAD 83  
UTM Zone 11



SIA - NR WMT  
9/12/2017  
2347



NOTE: fire perimeter doesn't reflect late growth yesterday. See IR map for most recent perimeter.