

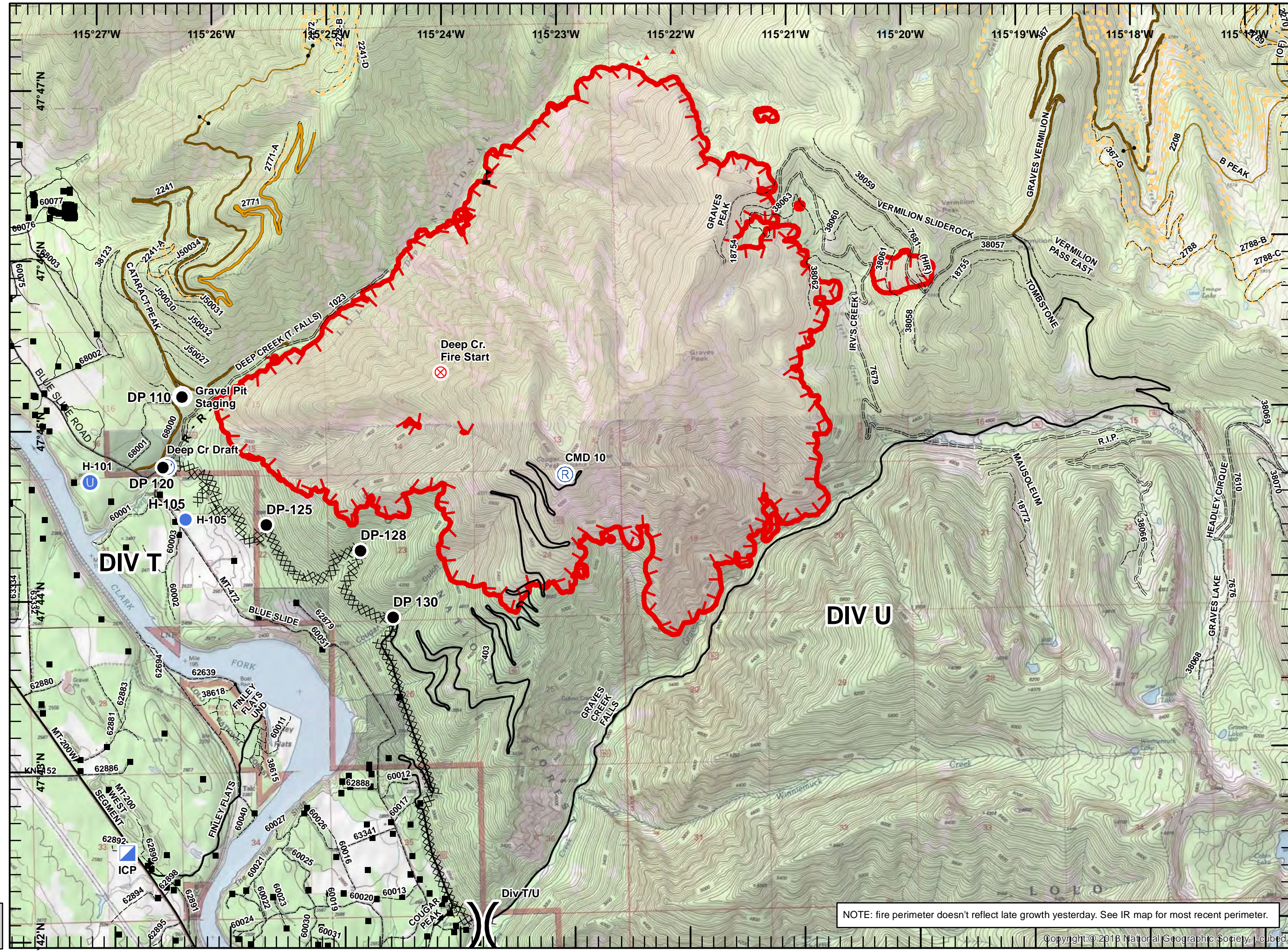
**Hwy 200 Complex
IAP Map**
Deep Creek
MT-LNF-001811
9/13/2017
Day Shift

Page 2 of 8

- Drop Point
- ⊗ Fire Origin
- U Unimproved Landing Area
- Helispot
- ▣ Incident Command Post
- ▲ IR Isolated Heat Source
- Ⓡ Repeater
- Ⓢ Staging
- Ⓜ Water Source
- ▬ Value at Risk
- ⎓ Division Break

- Structures
- Private Road
- County Road
- FS Roads (IGBC)**
- IMPASSABLE TO MOTORIZED VEHICLES
- RESTRICTED/LEGAL... GATED ADMIN USE
- BARRIERED/LEGALLY NO ADMIN USE
- OPEN DURING BEAR SEASON
- <all other values>
- FS roads -**
- Basic Custodial (Closed)
- High Clearance Vehicles
- Gravel/Paved Roads
- ▬ Uncontrolled Fire Edge
- ⊗ Completed Dozer Line
- Ⓡ Road as Completed

NAD 83
UTM Zone 11
SIA - NR WMT
9/12/2017
2347



NOTE: fire perimeter doesn't reflect late growth yesterday. See IR map for most recent perimeter.