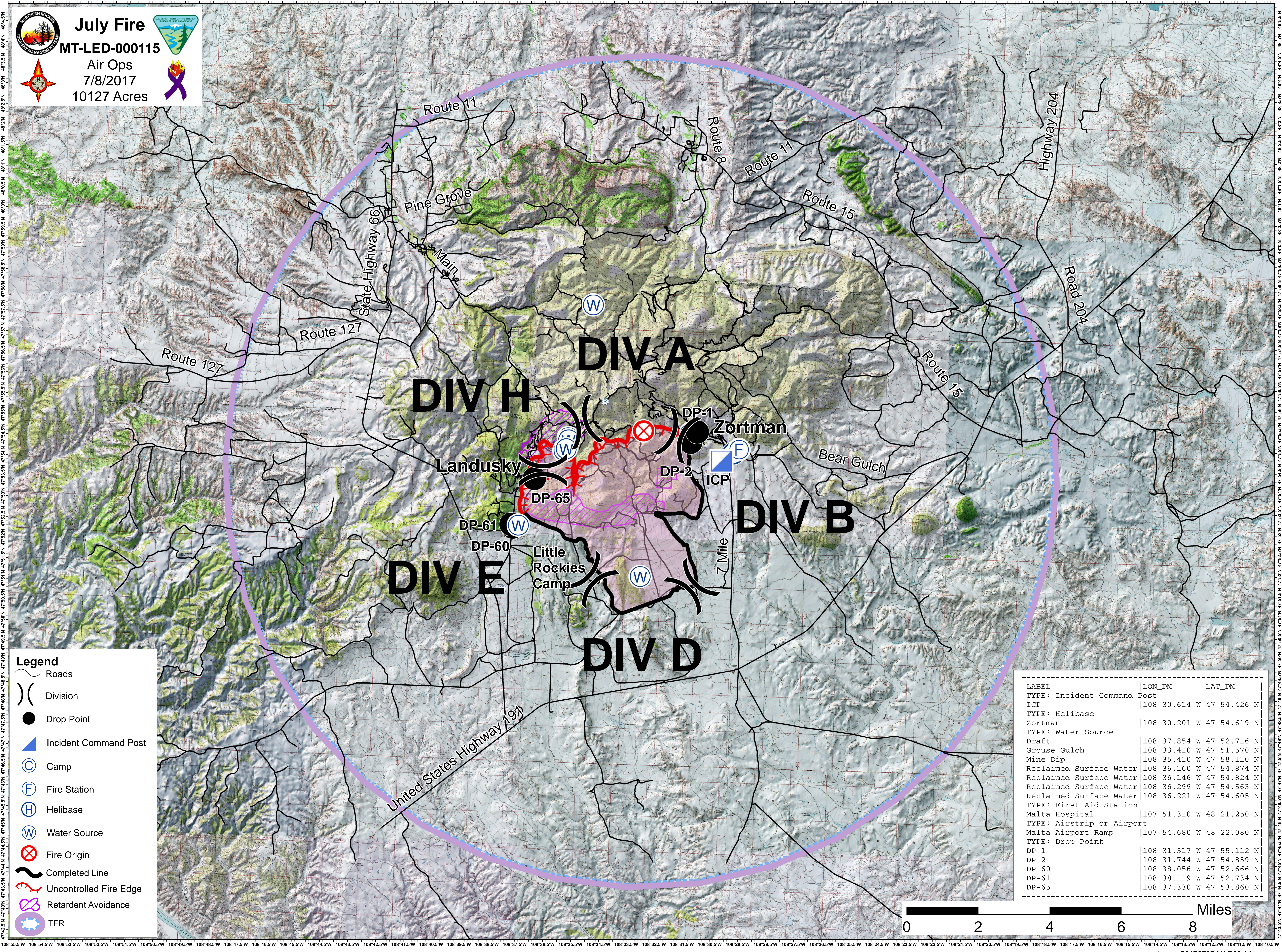


July Fire
MT-LED-000115
 Air Ops
 7/8/2017
 10127 Acres



Legend

- Roads
- Division
- Drop Point
- Incident Command Post
- Camp
- Fire Station
- Helibase
- Water Source
- Fire Origin
- Completed Line
- Uncontrolled Fire Edge
- Retardant Avoidance
- TFR

LABEL	LON_DM	LAT_DM
TYPE: Incident Command Post		
ICP	108 30.614 W	47 54.426 N
TYPE: Helibase		
Zortman	108 30.201 W	47 54.619 N
TYPE: Water Source		
Draft	108 37.854 W	47 52.716 N
Grouse Gulch	108 33.410 W	47 51.570 N
Mine Dip	108 35.410 W	47 58.110 N
Reclaimed Surface Water	108 36.160 W	47 54.874 N
Reclaimed Surface Water	108 36.146 W	47 54.824 N
Reclaimed Surface Water	108 36.299 W	47 54.563 N
Reclaimed Surface Water	108 36.221 W	47 54.605 N
TYPE: First Aid Station		
Malta Hospital	107 51.310 W	48 21.250 N
TYPE: Airstrip or Airport		
Malta Airport Ramp	107 54.680 W	48 22.080 N
TYPE: Drop Point		
DP-1	108 31.517 W	47 55.112 N
DP-2	108 31.744 W	47 54.859 N
DP-60	108 38.056 W	47 52.666 N
DP-61	108 38.119 W	47 52.734 N
DP-65	108 37.330 W	47 53.860 N

