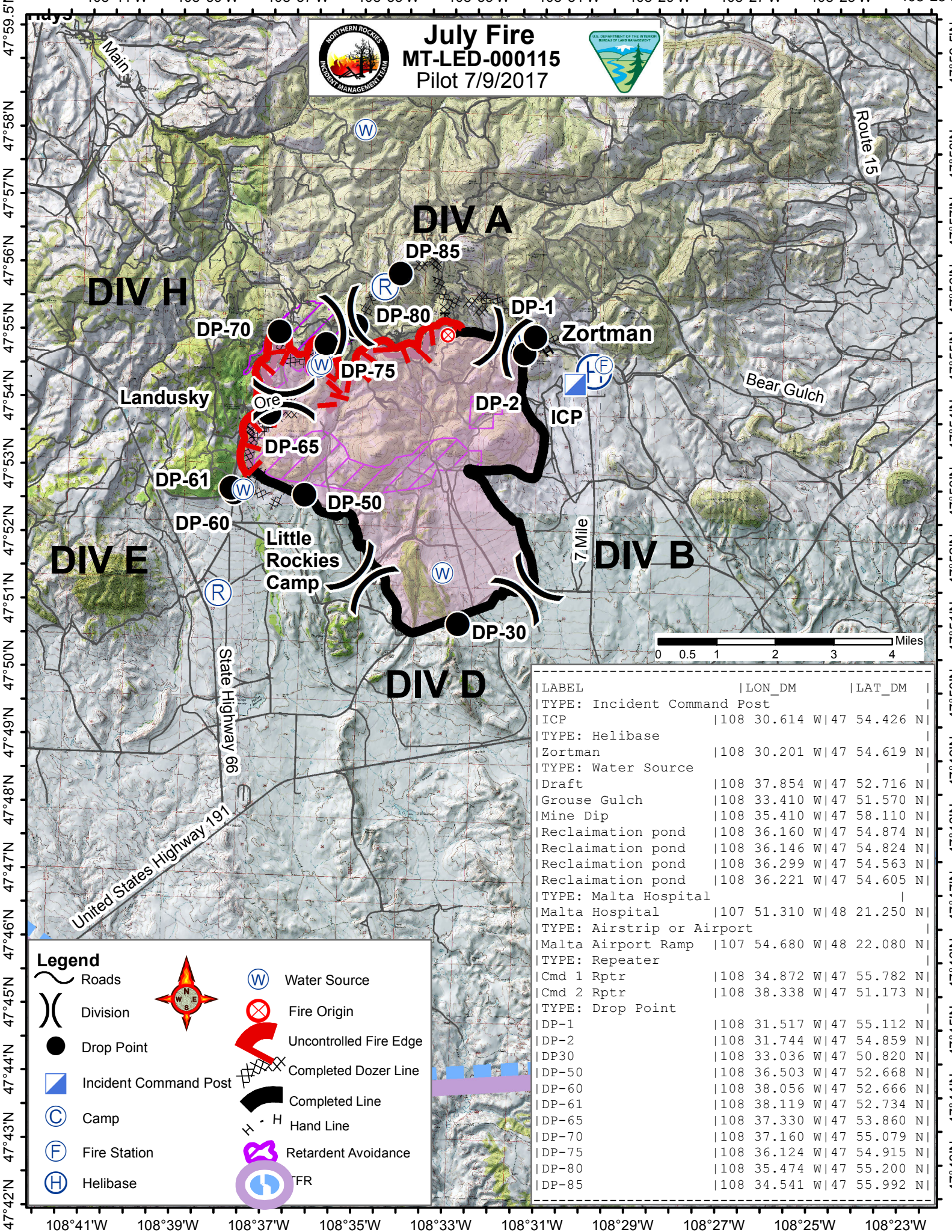


108°41'W 108°39'W 108°37'W 108°35'W 108°33'W 108°31'W 108°29'W 108°27'W 108°25'W 108°23'W



July Fire
MT-LED-000115
 Pilot 7/9/2017



| LABEL | LON_DM | LAT_DM |
|-----------------------------|--------------------------|--------|
| TYPE: Incident Command Post | | |
| ICP | 108 30.614 W 47 54.426 N | |
| TYPE: Helibase | | |
| Zortman | 108 30.201 W 47 54.619 N | |
| TYPE: Water Source | | |
| Draft | 108 37.854 W 47 52.716 N | |
| Grouse Gulch | 108 33.410 W 47 51.570 N | |
| Mine Dip | 108 35.410 W 47 58.110 N | |
| Reclamation pond | 108 36.160 W 47 54.874 N | |
| Reclamation pond | 108 36.146 W 47 54.824 N | |
| Reclamation pond | 108 36.299 W 47 54.563 N | |
| Reclamation pond | 108 36.221 W 47 54.605 N | |
| TYPE: Malta Hospital | | |
| Malta Hospital | 107 51.310 W 48 21.250 N | |
| TYPE: Airstrip or Airport | | |
| Malta Airport Ramp | 107 54.680 W 48 22.080 N | |
| TYPE: Repeater | | |
| Cmd 1 Rptr | 108 34.872 W 47 55.782 N | |
| Cmd 2 Rptr | 108 38.338 W 47 51.173 N | |
| TYPE: Drop Point | | |
| DP-1 | 108 31.517 W 47 55.112 N | |
| DP-2 | 108 31.744 W 47 54.859 N | |
| DP30 | 108 33.036 W 47 50.820 N | |
| DP-50 | 108 36.503 W 47 52.668 N | |
| DP-60 | 108 38.056 W 47 52.666 N | |
| DP-61 | 108 38.119 W 47 52.734 N | |
| DP-65 | 108 37.330 W 47 53.860 N | |
| DP-70 | 108 37.160 W 47 55.079 N | |
| DP-75 | 108 36.124 W 47 54.915 N | |
| DP-80 | 108 35.474 W 47 55.200 N | |
| DP-85 | 108 34.541 W 47 55.992 N | |

Legend

- Roads
- Division
- Drop Point
- Incident Command Post
- Camp
- Fire Station
- Helibase
- Water Source
- Fire Origin
- Uncontrolled Fire Edge
- Completed Dozer Line
- Completed Line
- Hand Line
- Retardant Avoidance
- FR

108°41'W 108°39'W 108°37'W 108°35'W 108°33'W 108°31'W 108°29'W 108°27'W 108°25'W 108°23'W