

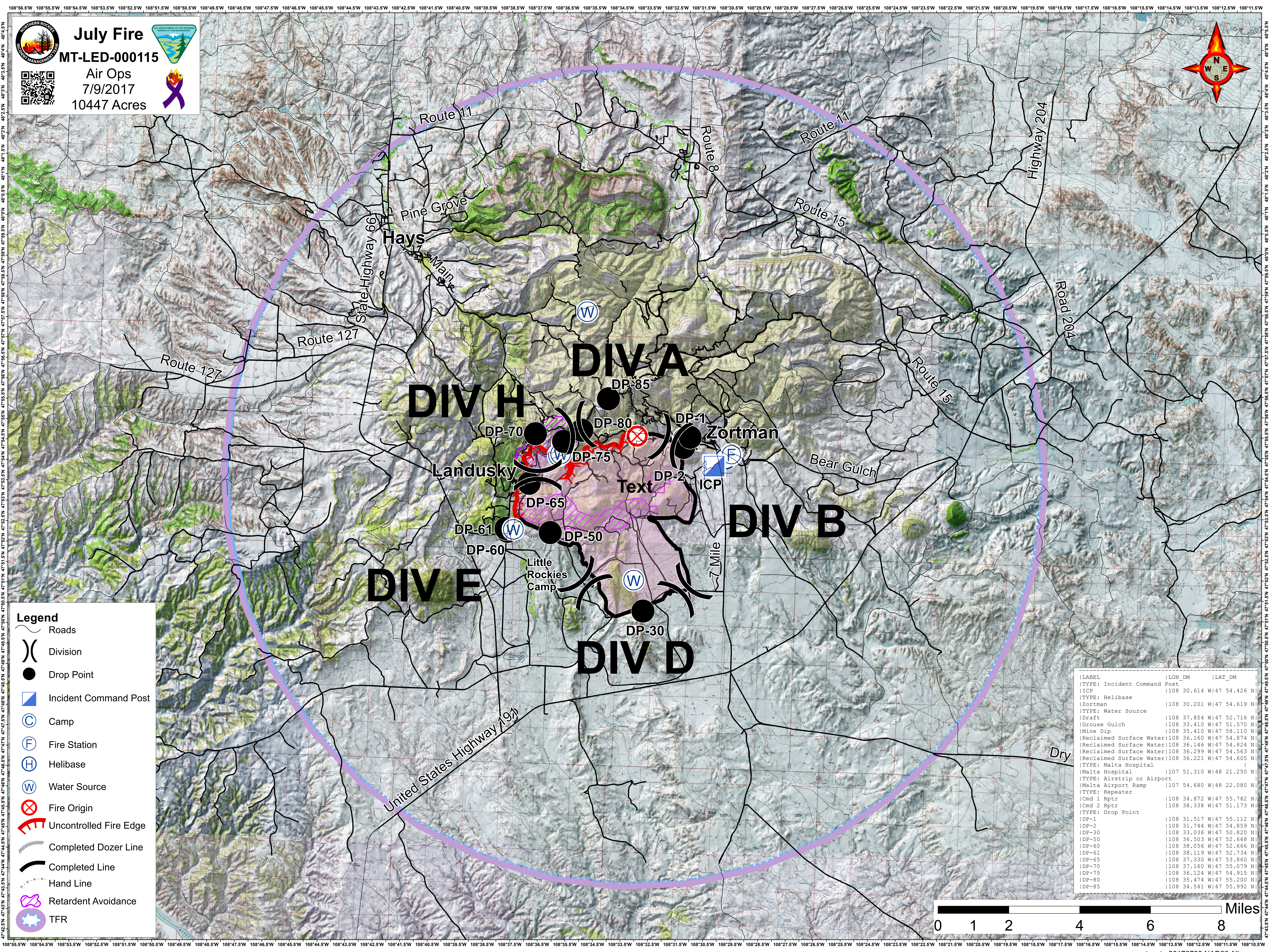


**July Fire**  
**MT-LED-000115**  
 Air Ops  
 7/9/2017  
 10447 Acres



**Legend**

- Roads
- Division
- Drop Point
- Incident Command Post
- Camp
- Fire Station
- Helibase
- Water Source
- Fire Origin
- Uncontrolled Fire Edge
- Completed Dozer Line
- Completed Line
- Hand Line
- Retardant Avoidance
- TFR

LABEL	LON_DM	LAT_DM
TYPE: Incident Command Post	108 30.614 W 47	54.426 N
ICP	108 30.201 W 47	54.619 N
TYPE: Helibase		
Zortman	108 37.854 W 47	52.716 N
TYPE: Water Source		
Draft	108 33.410 W 47	51.570 N
Grouse Gulch	108 35.410 W 47	58.110 N
Mine Dip	108 36.160 W 47	54.874 N
Reclaimed Surface Water	108 36.146 W 47	54.824 N
Reclaimed Surface Water	108 36.299 W 47	54.563 N
Reclaimed Surface Water	108 36.221 W 47	54.605 N
TYPE: Malta Hospital		
Malta Hospital	107 51.310 W 48	21.250 N
TYPE: Airstrip or Airport		
Malta Airport Ramp	107 54.680 W 48	22.080 N
TYPE: Repeater		
Cmd 1 Rptr	108 34.872 W 47	55.782 N
Cmd 2 Rptr	108 38.338 W 47	51.173 N
TYPE: Drop Point		
DP-1	108 31.517 W 47	55.112 N
DP-2	108 31.744 W 47	54.859 N
DP-30	108 33.036 W 47	50.820 N
DP-50	108 36.503 W 47	52.668 N
DP-60	108 38.056 W 47	52.666 N
DP-61	108 38.119 W 47	52.734 N
DP-65	108 37.330 W 47	53.860 N
DP-70	108 37.160 W 47	55.079 N
DP-75	108 36.124 W 47	54.915 N
DP-80	108 35.474 W 47	55.200 N
DP-85	108 34.541 W 47	55.992 N

