

108°41'W 108°40'W 108°39'W 108°38'W 108°37'W 108°36'W 108°35'W 108°34'W 108°33'W 108°32'W 108°31'W 108°30'W 108°29'W

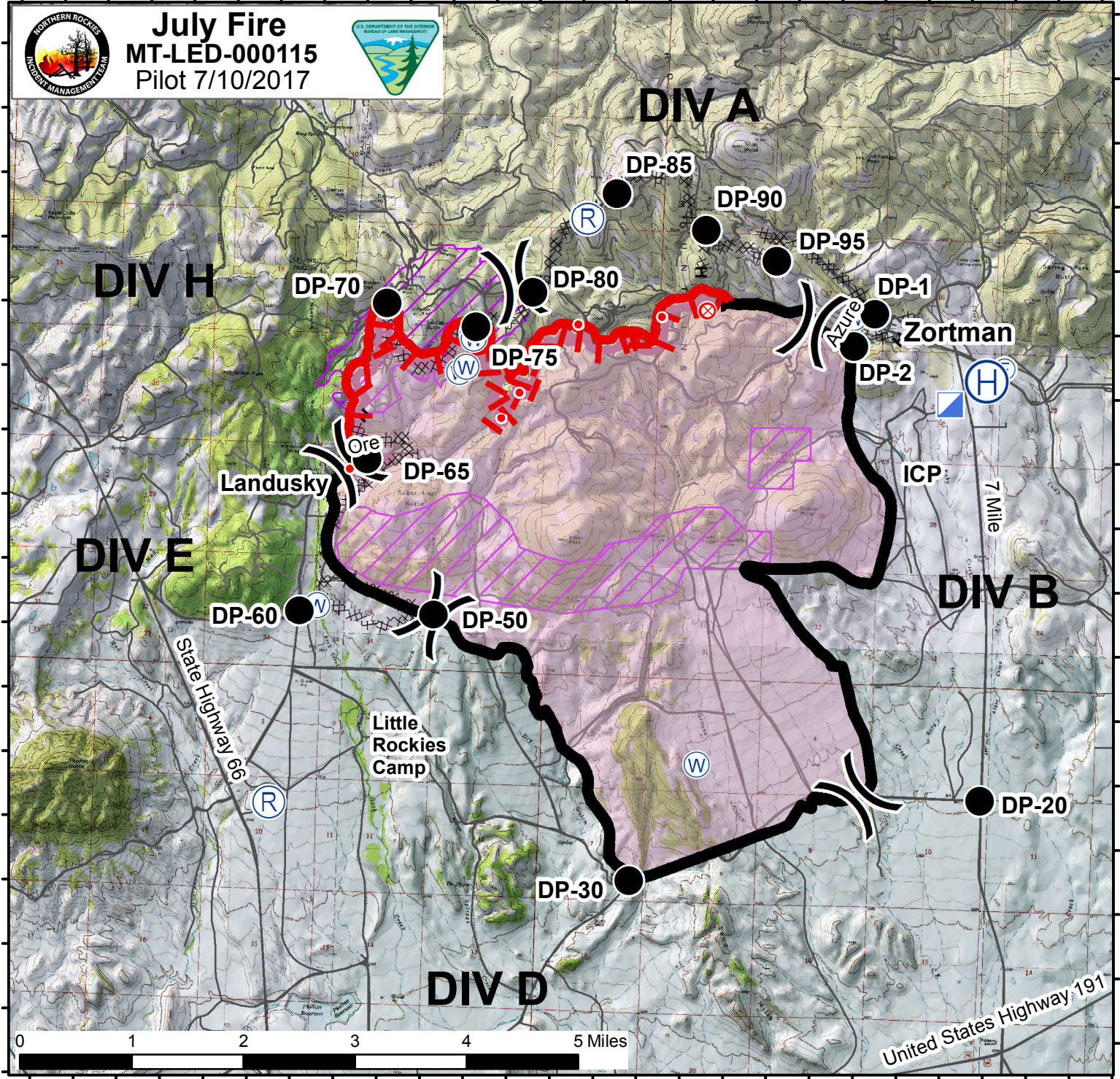


July Fire
MT-LED-000115
Pilot 7/10/2017



47°57'N 47°56'N 47°55'N 47°54'N 47°53'N 47°52'N 47°51'N 47°50'N 47°49.5'N

47°57'N 47°56'N 47°55'N 47°54'N 47°53'N 47°52'N 47°51'N 47°50'N 47°49.5'N



United States Highway 191

108°41'W 108°40'W 108°39'W 108°38'W 108°37'W 108°36'W 108°35'W 108°34'W 108°33'W 108°32'W 108°31'W 108°30'W 108°29'W

tconte20170709 NAD83 Albers

Legend

- Roads
- Division
- Drop Point
- Hand Line
- Dozer Line
- Completed Line
- Uncontrolled Edge
- Retardent Avoidance
- ICP
- Water Source
- Helibase
- TFR



LABEL	LON_DM	LAT_DM	LABEL	LON_DM	LAT_DM
TYPE: Incident Command Post			TYPE: Repeater		
ICP	108 30.614 W	47 54.426 N	Cmd 1 Rptr	108 34.872 W	47 55.782 N
TYPE: Helibase			Cmd 2 Rptr	108 38.338 W	47 51.173 N
Zortman	108 30.201 W	47 54.619 N	TYPE: Drop Point		
TYPE: Water Source			DP-1	108 31.517 W	47 55.112 N
Draft	108 37.854 W	47 52.716 N	DP-2	108 31.744 W	47 54.859 N
Grouse Gulch	108 33.410 W	47 51.570 N	DP-20	108 30.129 W	47 51.356 N
Mine Dip	108 35.410 W	47 58.110 N	DP-30	108 34.150 W	47 50.648 N
Reclamation pond	108 36.160 W	47 54.874 N	DP-50	108 36.503 W	47 52.668 N
Reclamation pond	108 36.146 W	47 54.824 N	DP-60	108 38.056 W	47 52.666 N
Reclamation pond	108 36.299 W	47 54.563 N	DP-65	108 37.330 W	47 53.860 N
Reclamation pond	108 36.221 W	47 54.605 N	DP-70	108 37.160 W	47 55.079 N
TYPE: Malta Hospital			DP-75	108 36.124 W	47 54.915 N
Malta Hospital	107 51.310 W	48 21.250 N	DP-80	108 35.474 W	47 55.200 N
TYPE: Airstrip or Airport			DP-85	108 34.541 W	47 55.992 N
Malta Airport Ramp	107 54.680 W	48 22.080 N	DP-90	108 33.493 W	47 55.722 N
			DP-95	108 32.670 W	47 55.499 N