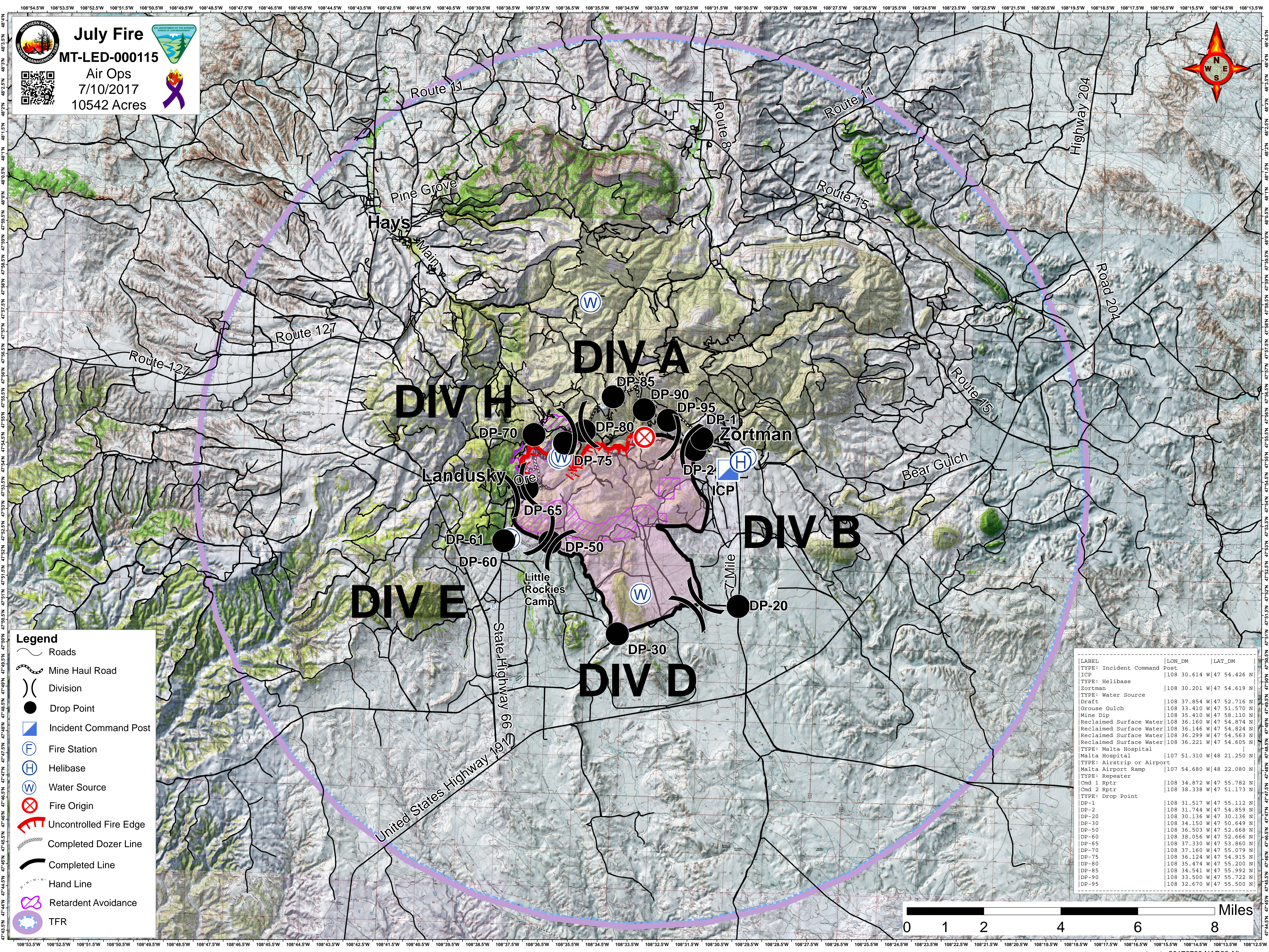


July Fire
MT-LED-000115
 Air Ops
 7/10/2017
 10542 Acres



- Legend**
- Roads
 - Mine Haul Road
 - Division
 - Drop Point
 - Incident Command Post
 - Fire Station
 - Helibase
 - Water Source
 - Fire Origin
 - Uncontrolled Fire Edge
 - Completed Dozer Line
 - Completed Line
 - Hand Line
 - Retardant Avoidance
 - TFR

LABEL	LON_DM	LAT_DM
TYPE: Incident Command Post	108 30.614 W	47 54.426 N
TYPE: Helibase	108 30.201 W	47 54.619 N
TYPE: Water Source	108 37.854 W	47 52.716 N
Draft	108 33.410 W	47 51.570 N
Grouse Gulch	108 35.410 W	47 58.110 N
Mine Dip	108 36.160 W	47 54.874 N
Reclaimed Surface Water	108 36.146 W	47 54.824 N
Reclaimed Surface Water	108 36.299 W	47 54.563 N
Reclaimed Surface Water	108 36.221 W	47 54.605 N
TYPE: Malta Hospital	107 51.310 W	48 21.250 N
TYPE: Airstrip or Airport	107 54.680 W	48 22.080 N
Malta Airport Ramp	107 54.680 W	48 22.080 N
TYPE: Repeater	108 34.872 W	47 55.782 N
Cmd 1 Rptr	108 38.338 W	47 51.173 N
Cmd 2 Rptr	108 34.872 W	47 55.782 N
TYPE: Drop Point		
DP-1	108 31.517 W	47 55.112 N
DP-2	108 31.744 W	47 54.859 N
DP-20	108 30.136 W	47 30.136 N
DP-30	108 34.150 W	47 50.649 N
DP-50	108 36.503 W	47 52.668 N
DP-60	108 38.056 W	47 52.666 N
DP-65	108 37.330 W	47 53.860 N
DP-70	108 37.160 W	47 55.079 N
DP-75	108 36.124 W	47 54.915 N
DP-80	108 35.474 W	47 55.200 N
DP-85	108 34.541 W	47 55.992 N
DP-90	108 33.500 W	47 55.722 N
DP-95	108 32.670 W	47 55.500 N

