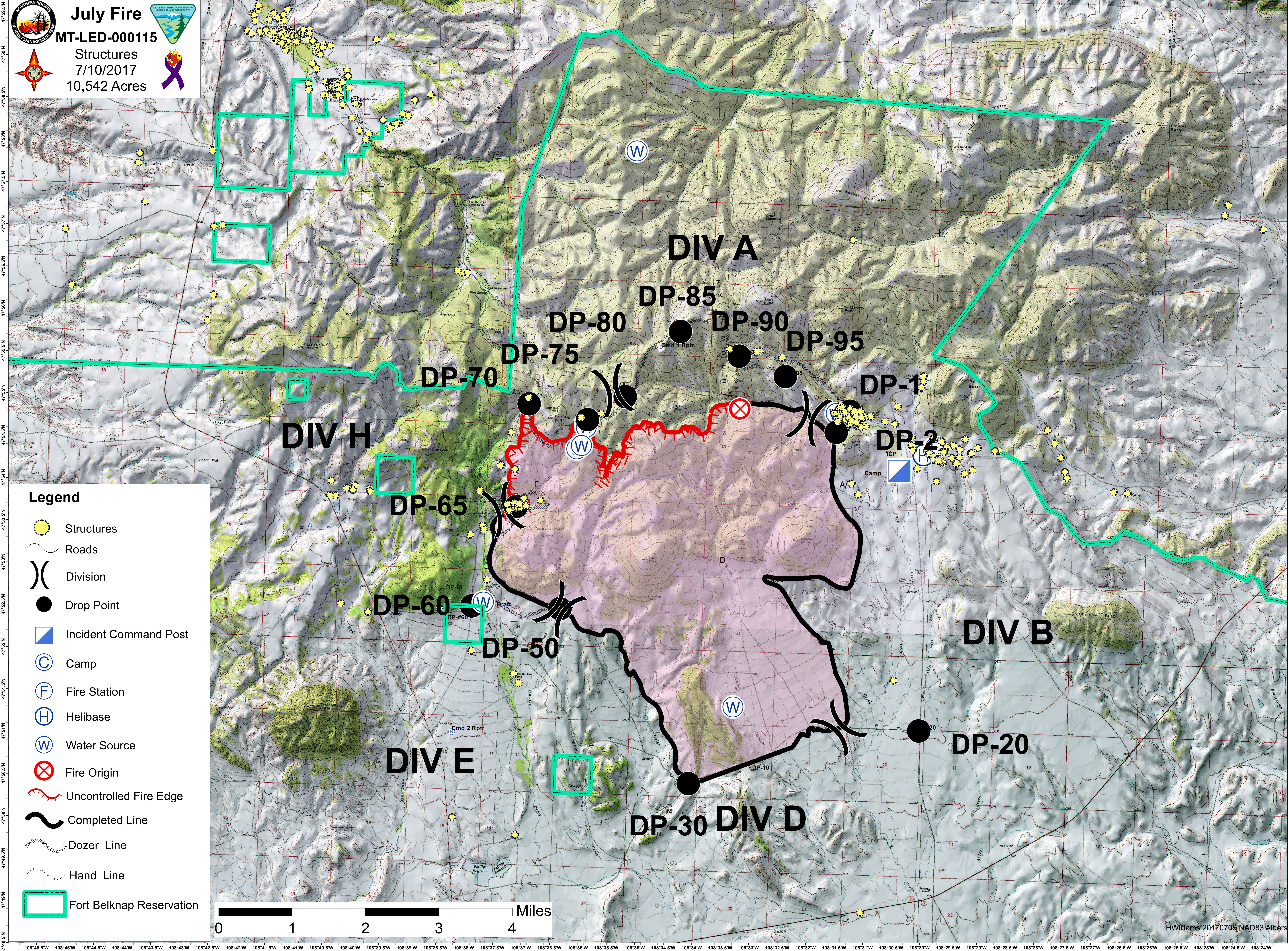


108°46.5'W 108°46'W 108°45.5'W 108°45'W 108°44.5'W 108°44'W 108°43.5'W 108°43'W 108°42.5'W 108°42'W 108°41.5'W 108°41'W 108°40.5'W 108°40'W 108°39.5'W 108°39'W 108°38.5'W 108°38'W 108°37.5'W 108°37'W 108°36.5'W 108°36'W 108°35.5'W 108°35'W 108°34.5'W 108°34'W 108°33.5'W 108°33'W 108°32.5'W 108°32'W 108°31.5'W 108°31'W 108°30.5'W 108°30'W 108°29.5'W 108°29'W 108°28.5'W 108°28'W 108°27.5'W 108°27'W 108°26.5'W 108°26'W 108°25.5'W 108°25'W 108°24.5'W

July Fire
MT-LED-000115
Structures
7/10/2017
10,542 Acres



- Legend**
- Structures
 - Roads
 - Division
 - Drop Point
 - Incident Command Post
 - Camp
 - Fire Station
 - Helibase
 - Water Source
 - Fire Origin
 - Uncontrolled Fire Edge
 - Completed Line
 - Dozer Line
 - Hand Line
 - Fort Belknap Reservation

0 1 2 3 4 Miles