

108°41'W 108°40'W 108°39'W 108°38'W 108°37'W 108°36'W 108°35'W 108°34'W 108°33'W 108°32'W 108°31'W 108°30'W 108°29'W

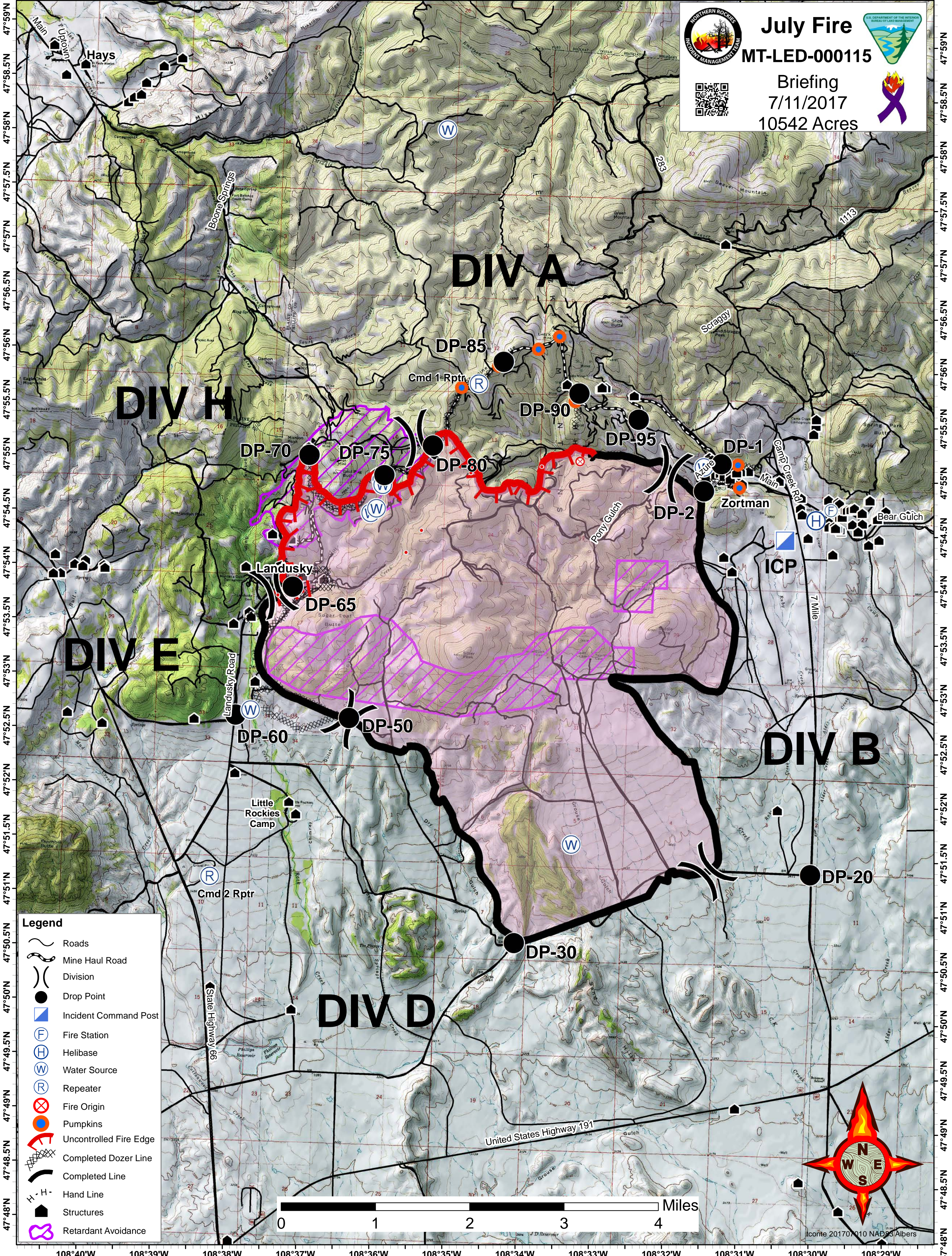


July Fire

MT-LED-000115

Briefing
7/11/2017

10542 Acres



DIV H

DIV A

DIV E

DIV B

DIV D

- Legend**
- Roads
 - Mine Haul Road
 - Division
 - Drop Point
 - Incident Command Post
 - Fire Station
 - Helibase
 - Water Source
 - Repeater
 - Fire Origin
 - Pumpkins
 - Uncontrolled Fire Edge
 - Completed Dozer Line
 - Completed Line
 - Hand Line
 - Structures
 - Retardant Avoidance



108°40'W 108°39'W 108°38'W 108°37'W 108°36'W 108°35'W 108°34'W 108°33'W 108°32'W 108°31'W 108°30'W 108°29'W