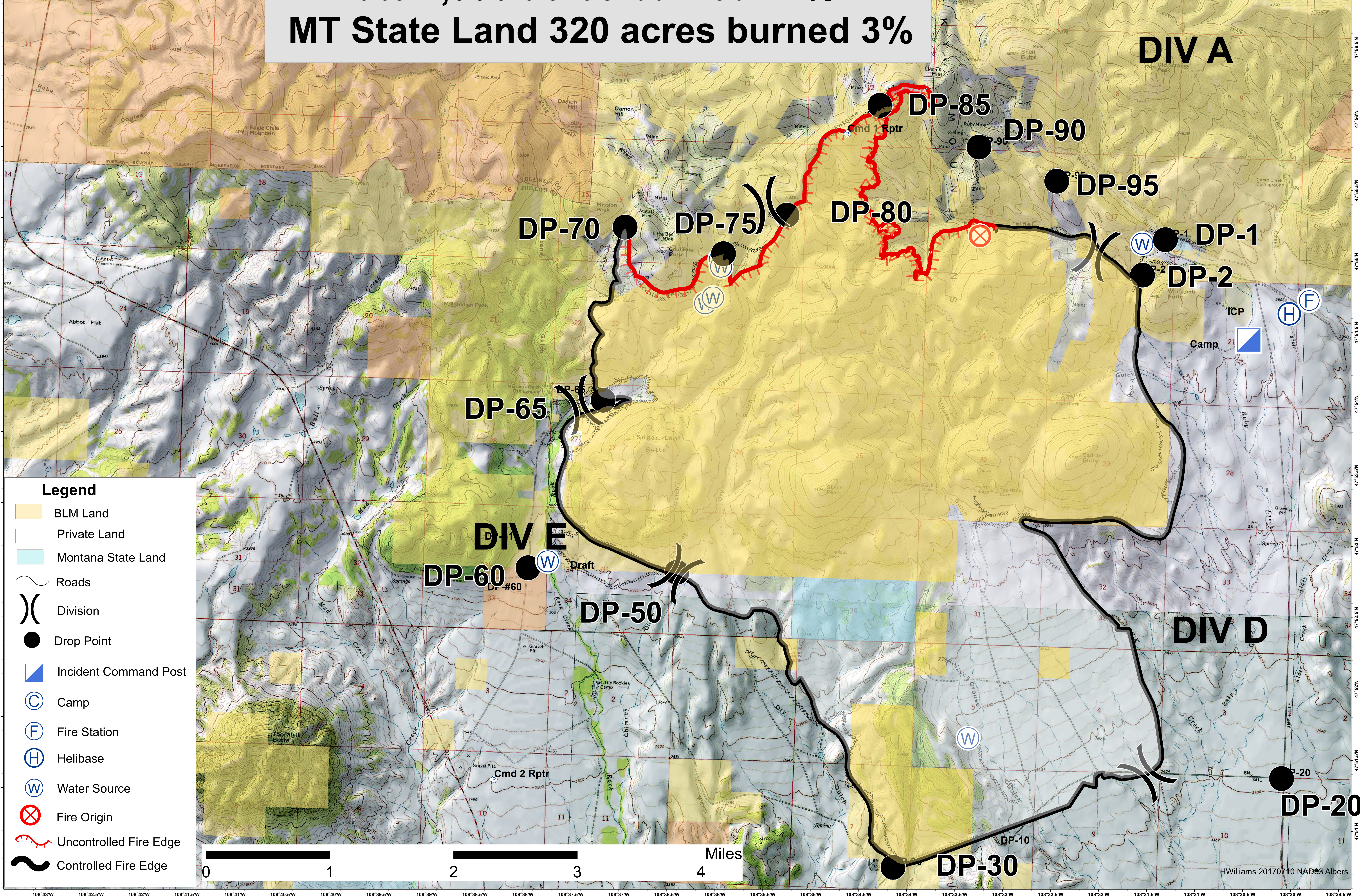


108°43.5'W 108°43'W 108°42.5'W 108°42'W 108°41.5'W 108°41'W 108°40.5'W 108°40'W 108°39.5'W 108°39'W 108°38.5'W 108°38'W 108°37.5'W 108°37'W 108°36.5'W 108°36'W 108°35.5'W 108°35'W 108°34.5'W 108°34'W 108°33.5'W 108°33'W 108°32.5'W 108°32'W 108°31.5'W 108°31'W 108°30.5'W 108°30'W

**July Fire**  
**MT-LED-000115**  
 Ownership  
 07/12/2017  
 11,174 Acres

**BLM 7,859 acres burned 70%**  
**Private 2,993 acres burned 27%**  
**MT State Land 320 acres burned 3%**



**Legend**

- BLM Land
- Private Land
- Montana State Land
- Roads
- Division
- Drop Point
- Incident Command Post
- Camp
- Fire Station
- Helibase
- Water Source
- Fire Origin
- Uncontrolled Fire Edge
- Controlled Fire Edge

108°43'W 108°42.5'W 108°42'W 108°41.5'W 108°41'W 108°40.5'W 108°40'W 108°39.5'W 108°39'W 108°38.5'W 108°38'W 108°37.5'W 108°37'W 108°36.5'W 108°36'W 108°35.5'W 108°35'W 108°34.5'W 108°34'W 108°33.5'W 108°33'W 108°32.5'W 108°32'W 108°31.5'W 108°31'W 108°30.5'W 108°30'W