

LIBERTY FIRE

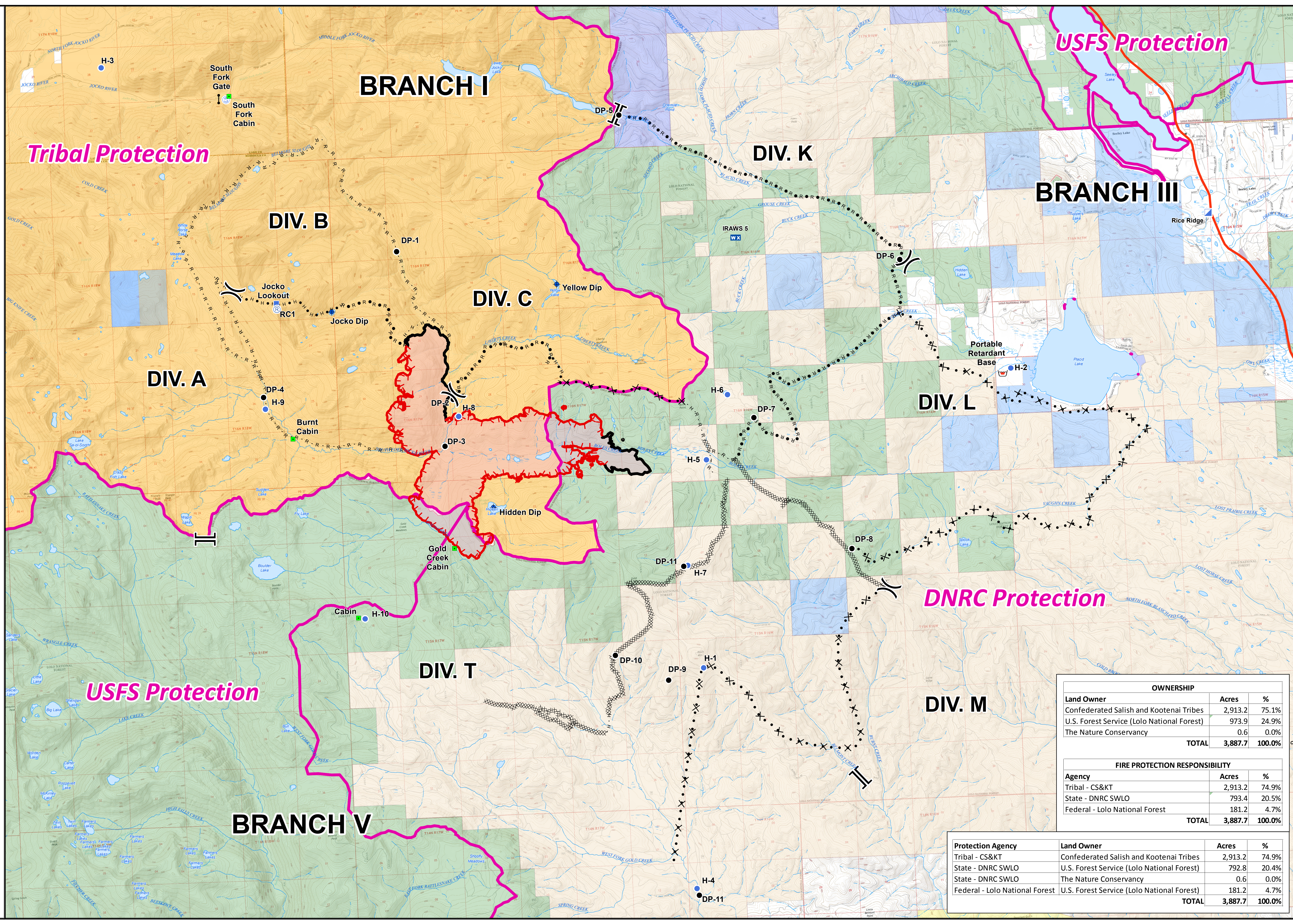
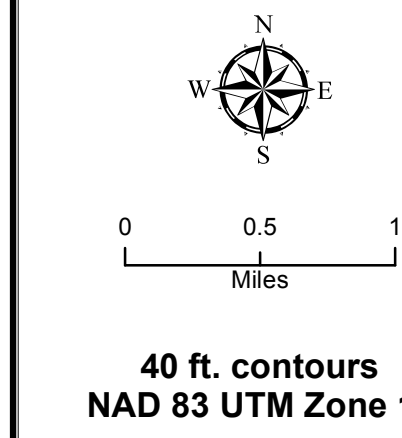
MT-FHA-000105
August 6, 2017

**Ownership
and
Protection**



- Liberty Fire
- Uncontrolled Fire Edge
- Contained Fire Edge
- Proposed Dozer Line
- Completed Dozer Line
- Proposed Hand Line
- Completed Hand Line
- Proposed Road as Line
- Road as Completed Line
- Branch Break
- Division Break
- Drop Point
- Staging Area
- Repeater
- Helispot
- Unimproved Landing Area
- Dip Site
- Mobile Retardant Base
- Gate
- Lookout Tower
- Cabin
- Mobile Weather Unit

- Fire Protection Areas**
- Protection Area Boundary
- Land Ownership**
- U.S. Forest Service
 - U.S. Bureau of Land Management
 - Montana State Trust Lands
 - Montana Dept of Transportation
 - Montana Fish, Wildlife, and Parks
 - County Government
 - Private
 - Tribal Trust - CSKT
 - The Nature Conservancy



OWNERSHIP		
Land Owner	Acres	%
Confederated Salish and Kootenai Tribes	2,913.2	75.1%
U.S. Forest Service (Lolo National Forest)	973.9	24.9%
The Nature Conservancy	0.6	0.0%
TOTAL	3,887.7	100.0%

FIRE PROTECTION RESPONSIBILITY		
Agency	Acres	%
Tribal - CS&KT	2,913.2	74.9%
State - DNRC SWLO	793.4	20.5%
Federal - Lolo National Forest	181.2	4.7%
TOTAL	3,887.7	100.0%

Protection Agency	Land Owner	Acres	%
Tribal - CS&KT	Confederated Salish and Kootenai Tribes	2,913.2	74.9%
State - DNRC SWLO	U.S. Forest Service (Lolo National Forest)	792.8	20.4%
State - DNRC SWLO	The Nature Conservancy	0.6	0.0%
Federal - Lolo National Forest	U.S. Forest Service (Lolo National Forest)	181.2	4.7%
TOTAL		3,887.7	100.0%