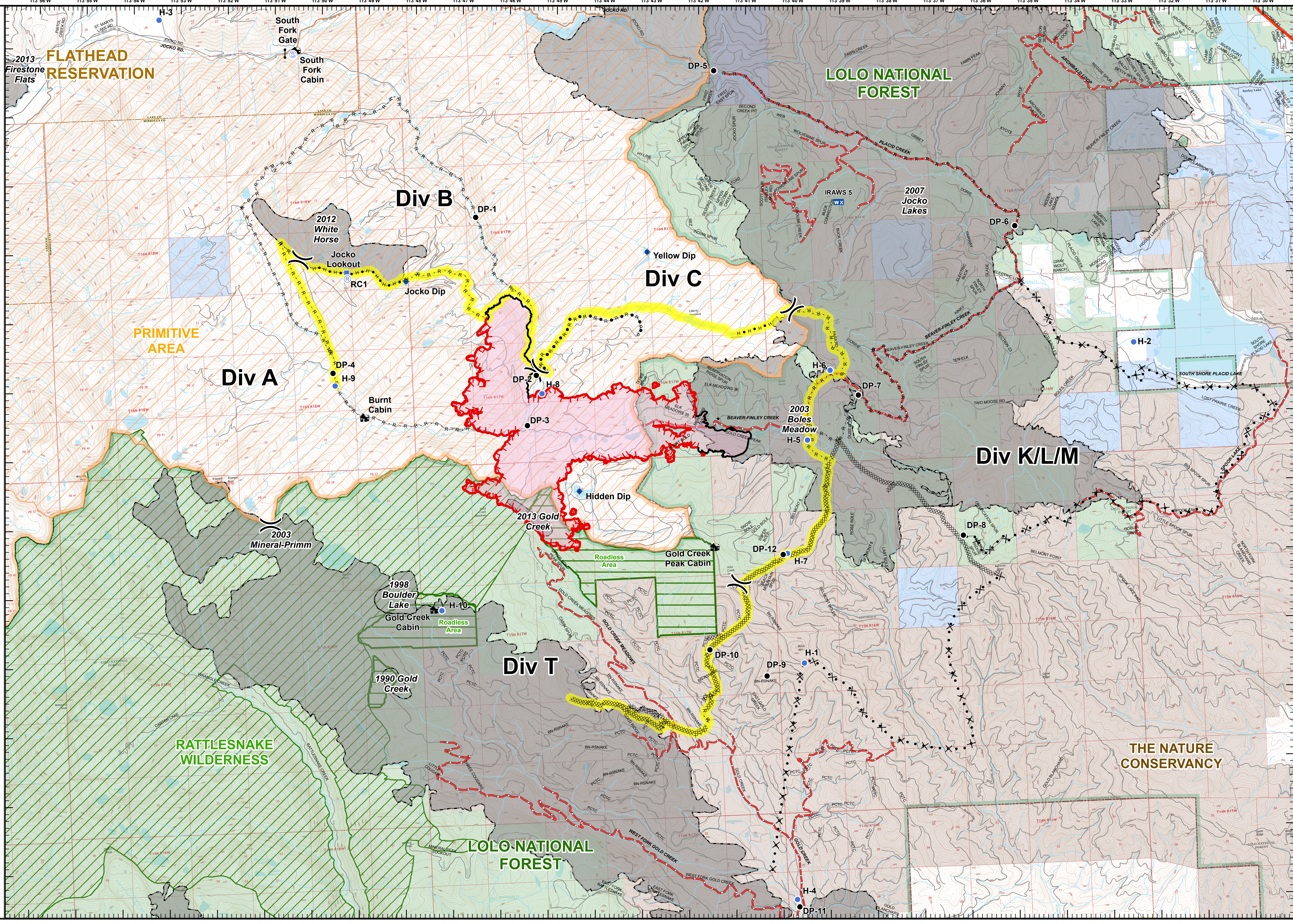
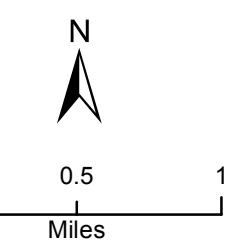


LIBERTY FIRE
MT-FHA-000105
IAP MAP
08/11/2017
Day
NAD83

Approximate Fire Perimeter
as of 8/08/2017 @ 2245

- () Division Break
- Drop Point
- WX Mobile Weather Unit
- Helispot
- Staging Area
- ⚡ Gate
- Ⓜ Repeater
- 🏠 Cabin
- 📍 Dip Site
- 👁 Lookout
- Uncontrolled Fire Edge
- Completed Line
- ⓧ Proposed Dozer Line
- ⓧ Completed Dozer Line
- H • H Proposed Hand Line
- H • H Completed Hand Line
- R • R Proposed Road as Line
- R • R Road as Completed Line
- Primary Containment Line
- Roads Closed to the Public
- Liberty Fire
- Local Fire History
- Inventoried Roadless Area
- Primitive Area
- Reservation Boundary
- The Nature Conservancy
- Wilderness Boundary
- National Forest Boundary
- Montana Fish, Wildlife, and Parks
- Montana State Trust Lands
- US Bureau of Land Management
- US Forest Service



113°56'W 113°55'W 113°54'W 113°53'W 113°52'W 113°51'W 113°50'W 113°49'W 113°48'W 113°47'W 113°46'W 113°45'W 113°44'W 113°43'W 113°42'W 113°41'W 113°40'W 113°39'W 113°38'W 113°37'W 113°36'W 113°35'W 113°34'W 113°33'W 113°32'W 113°31'W 113°30'W

47°11'N 47°10'N 47°9'N 47°8'N 47°7'N 47°6'N 47°5'N 47°4'N 47°3'N 47°2'N 47°1'N