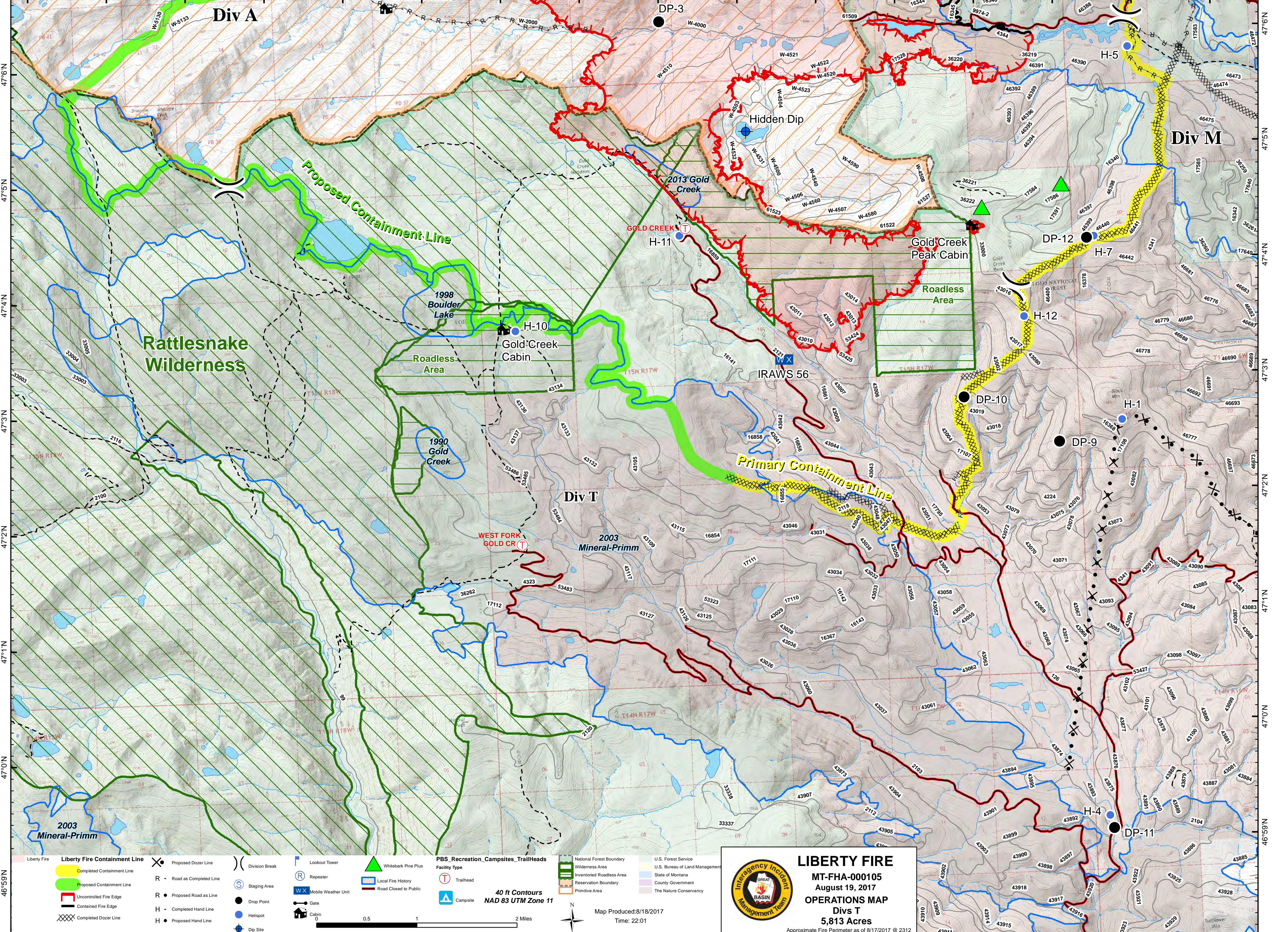


113°54'W 113°53'W 113°52'W 113°51'W 113°50'W 113°49'W 113°48'W 113°47'W 113°46'W 113°45'W 113°44'W 113°43'W 113°42'W 113°41'W 113°40'W 113°39'W



113°54'W 113°53'W 113°52'W 113°51'W 113°50'W 113°49'W 113°48'W 113°47'W 113°46'W 113°45'W 113°44'W 113°43'W 113°42'W 113°41'W 113°40'W 113°39'W

<ul style="list-style-type: none"> Liberty Fire Completed Containment Line Proposed Containment Line Uncontrolled Fire Edge Contained Fire Edge Completed Dozer Line 	<ul style="list-style-type: none"> Proposed Dozer Line R - Road as Completed Line R - Proposed Road as Line H - Completed Hand Line H - Proposed Hand Line 	<ul style="list-style-type: none"> Division Break Staging Area Drop Point Helispot Dip Site 	<ul style="list-style-type: none"> Lookout Tower Repeater Mobile Weather Unit Gate Cabin 	<ul style="list-style-type: none"> Whitebark Pine Plus Local Fire History Road Closed to Public 	<ul style="list-style-type: none"> PBS Recreation Campsites Trailheads Facility Type Trailhead Campsite 	<ul style="list-style-type: none"> National Forest Boundary Wilderness Area Inventoried Roadless Area Reservation Boundary Primitive Area 	<ul style="list-style-type: none"> U.S. Forest Service U.S. Bureau of Land Management State of Montana County Government The Nature Conservancy
--	---	--	---	--	---	--	--

40 ft Contours
NAD 83 UTM Zone 11

0.5 1 2 Miles

Map Produced: 8/18/2017
Time: 22:01

LIBERTY FIRE
 MT-FHA-000105
 August 19, 2017
 OPERATIONS MAP
 Divs T
 5,813 Acres
 Approximate Fire Perimeter as of 8/17/2017 @ 2312