

LIBERTY FIRE

MT-FHA-000105
August 27, 2017

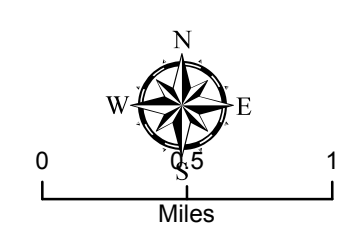
Ownership and Protection



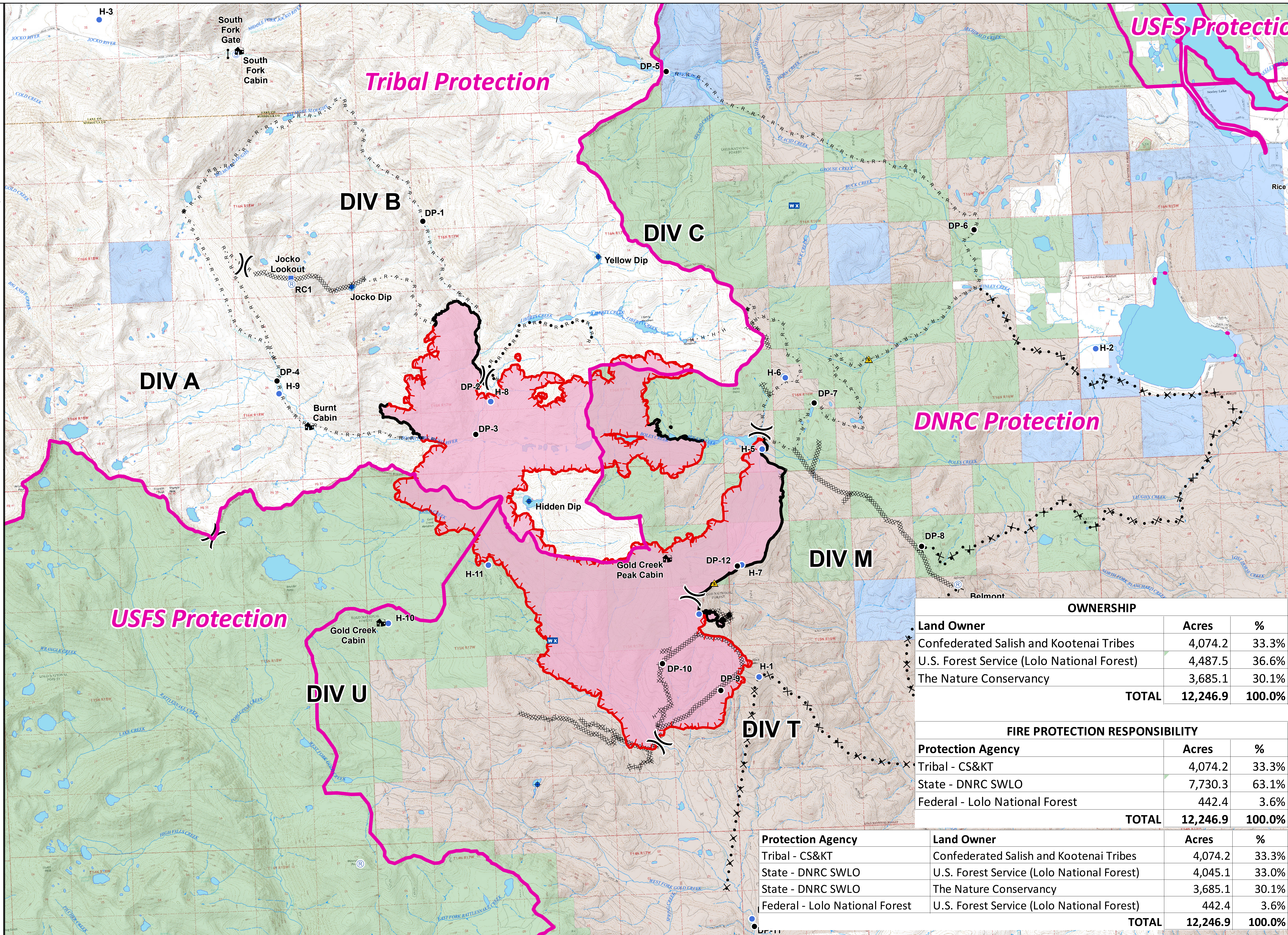
Approximate Fire Perimeter as of 8/26/2017 @ 2233

12,247 Acres

- ▭ Protection Areas
- ▬ Uncontrolled Fire Edge
- ▬ Contained Fire Edge
- ⊗ Proposed Dozer Line
- ⊗⊗⊗ Completed Dozer Line
- H · H Completed Hand Line
- R · R · R Proposed Road as Line
- R - R - R Road as Completed Line
- ⌋ Division Break
- Drop Point
- ⊙ Staging Area
- ⊙ Repeater
- ⊙ Helispot
- ⊙ Dip Site
- ⌋ Gate
- ⌋ Lookout Tower
- WX Mobile Weather Unit
- ⌋ Cabin
- Land Ownership**
- ▭ U.S. Forest Service
- ▭ Tribal Trust - CSKT
- ▭ State of Montana
- ▭ The Nature Conservancy
- ▭ Private



40 ft. contours
NAD 83 UTM Zone 11



OWNERSHIP		
Land Owner	Acres	%
Confederated Salish and Kootenai Tribes	4,074.2	33.3%
U.S. Forest Service (Lolo National Forest)	4,487.5	36.6%
The Nature Conservancy	3,685.1	30.1%
TOTAL	12,246.9	100.0%

FIRE PROTECTION RESPONSIBILITY		
Protection Agency	Acres	%
Tribal - CS&KT	4,074.2	33.3%
State - DNRC SWLO	7,730.3	63.1%
Federal - Lolo National Forest	442.4	3.6%
TOTAL	12,246.9	100.0%

Protection Agency	Land Owner	Acres	%
Tribal - CS&KT	Confederated Salish and Kootenai Tribes	4,074.2	33.3%
State - DNRC SWLO	U.S. Forest Service (Lolo National Forest)	4,045.1	33.0%
State - DNRC SWLO	The Nature Conservancy	3,685.1	30.1%
Federal - Lolo National Forest	U.S. Forest Service (Lolo National Forest)	442.4	3.6%
TOTAL	TOTAL	12,246.9	100.0%